

**Early Warning and Reporting System (EWARS)**

# **Weekly Bulletin**

**(16<sup>th</sup> Epidemiological Week)**

**28 April 2019**



**Government of Nepal**  
**Ministry of Health and Population**  
**Department of Health Services**  
**Epidemiology and Disease Control Division**  
**Kathmandu, Nepal**  
[ewarsedcd@gmail.com](mailto:ewarsedcd@gmail.com)

This bulletin includes the updates from the Early Warning and Reporting System (EWARS). It includes data since January 2019 till date, including comparison of same period during last year.

## The Early Warning and Reporting System (EWARS)

### Highlights

**AGE:** 354 cases of AGE are reported this week. The majority of these cases are from Kanchanpur (36 cases), Kailali (35 cases), Achham (31 cases) and Saptari (30 cases).

**SARI:** 118 cases of SARI are reported this week. The majority of these cases are from Jhapa (16 cases), Lalitpur (14 cases), Kathmandu (12 cases) and Dhankuta (6 cases). One death from SARI is reported this week by Kanti Children Hospital, Kathmandu and the case was from Palpa.

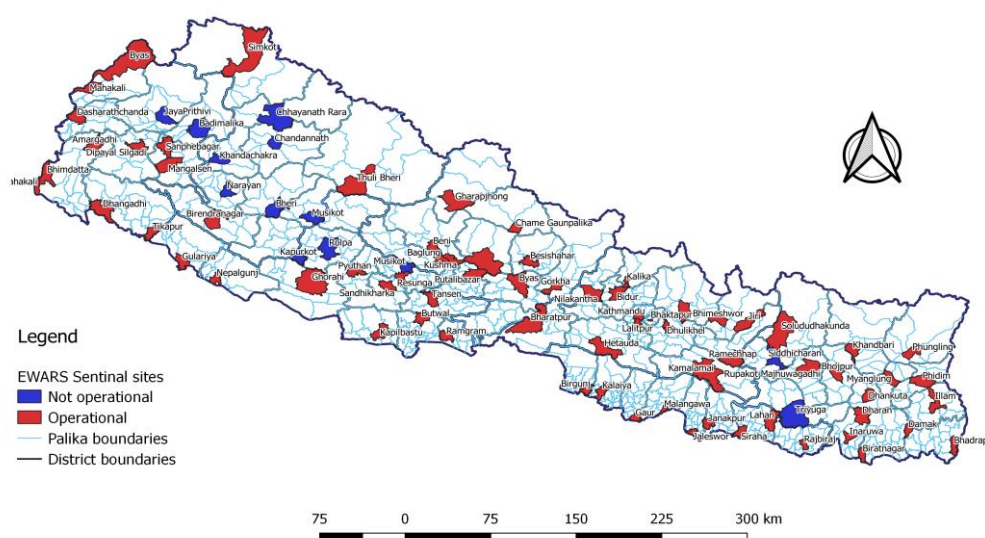
**Dengue:** One case of Dengue is reported this week by Bheri Hospital, Banke and the case is from Kailali.

**Kala-azar:** One case of Kala-azar is reported this week by Kanti Children Hospital, Kathmandu and the case is from Salyan.

The EWARS was established in 1997 to strengthen the flow of information on vector-borne and other outbreak prone infectious diseases from the district to Epidemiology and Disease Control Division (EDCD) and Vector-Borne Disease Research and Training Center (VBDRTC), Hetauda. Rapid Response Teams (RRTs) can be mobilized at short notice to facilitate prompt outbreak response at Central, Regional and District level. RRTs can also support local level health institutions for investigation and outbreak control activities.

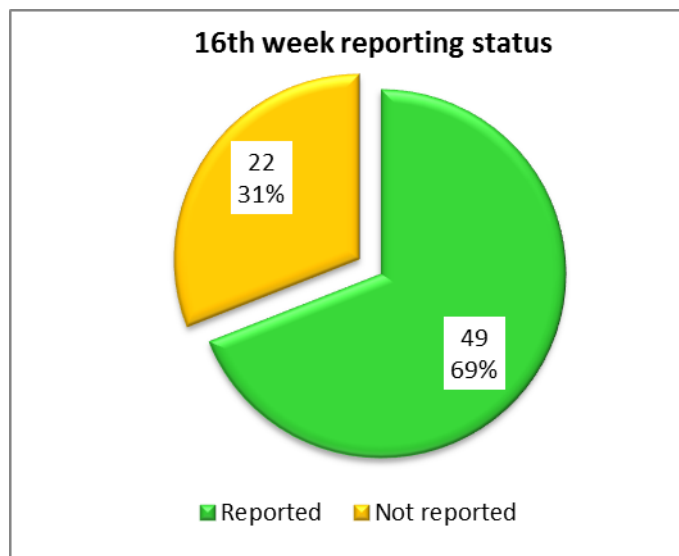
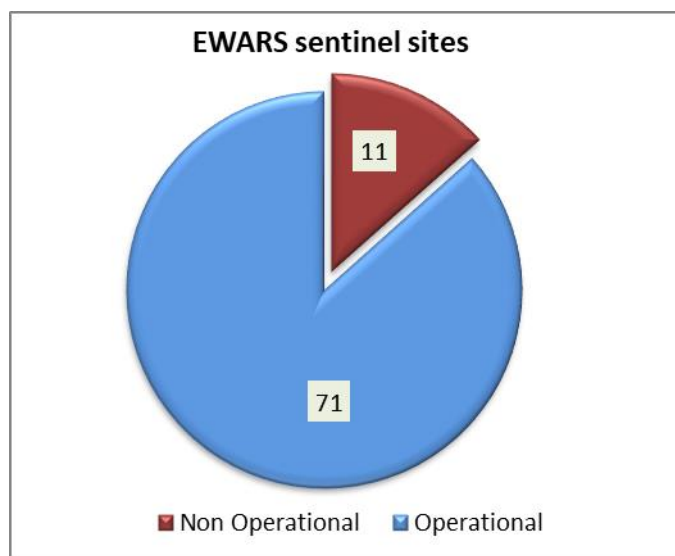
This information system is hospital-based and is currently operational in 71 hospitals (out of 82 sites) throughout Nepal (Figure 1). So far, the EWARS mainly focuses on the **weekly reporting** of number of cases and deaths (including "zero" reports) of six priority diseases/syndromes—Malaria, Kala-azar, Dengue, Acute Gastroenteritis (AGE), Cholera and Severe Acute Respiratory Infection (SARI), and other epidemic potential diseases/syndromes (like enteric fever). It equally focuses on **immediate reporting** (to be reported within 24 hours of diagnosis) of one confirmed case of Cholera, Kala-azar severe and complicated Malaria and one suspect/clinical case of Dengue as well as 5 or more cases of AGE and SARI from the same geographical locality in one-week period.

EWARS Sentinel Sites



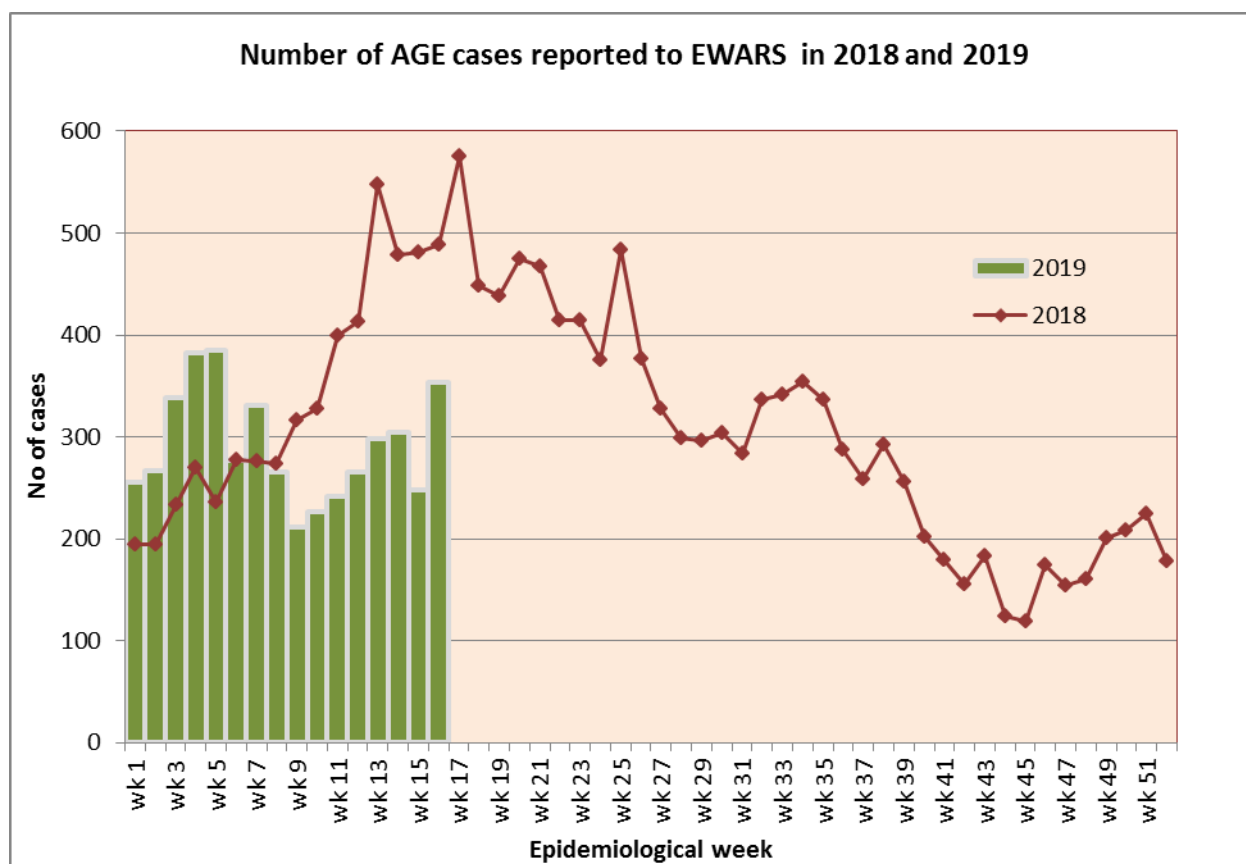
## Reporting Status

Out of 71 functional EWARS sentinel sites, report was received from 49 sentinel sites (69%) whereas 22 sentinel sites did not report in the 16<sup>th</sup> epidemiological week of 2019. The reporting coverage has increased compared to the last week.



### 1.1 Acute Gastro-Enteritis and Cholera

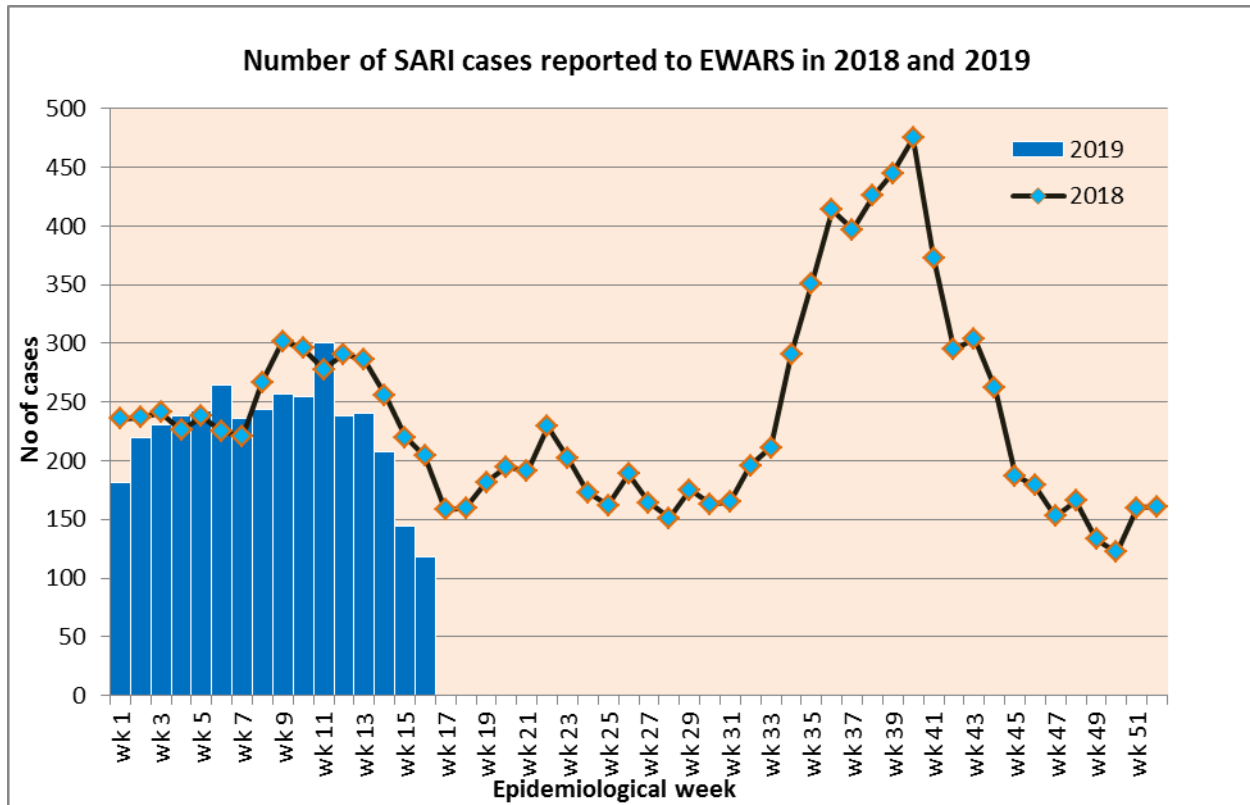
354 cases of AGE are reported in the 16<sup>th</sup> epidemiological week this year. The majority of these cases are from Kanchanpur (36 cases), Kailali (35 cases), Achham (31 cases) and Saptari (30 cases). 489 cases of AGE were reported this week in 2018.



## 1.2 Severe Acute Respiratory Infection (SARI)

118 cases of SARI are reported in the 16<sup>th</sup> epidemiological week this year. The majority of these cases are from Jhapa (16 cases), Lalitpur (14 cases), Kathmandu (12 cases) and Dhankuta (6 cases). 204 cases of SARI were reported this week in 2018.

One death from SARI is reported this week by Kanti Children Hospital, Kathmandu and the case was from Palpa.



## 1.3 Enteric Fever

21 cases of Enteric fever are reported this week. The majority of the cases are from Lamjung (3 cases), Kavre (3 cases) and saptari (2 cases).

## 1.4 Malaria

No case of Malaria is reported this week by. Two cases of Malaria were reported this week in 2018.

## 1.5 Dengue

One case of Dengue is reported this week by Bheri Hospital, Banke and the case is from Kailali. One case of Dengue was reported this week in 2018.

## 1.6 Kala-azar

One case of Kala-azar is reported this week by Kanti Children Hospital, Kathmandu and the case is from Salyan. Five cases of Kala-azar were reported this week in 2018.

## 1.7 Scrub typhus

One case of Scrub typhus is reported this week by District Hospital, Dadeldhura and the case is from Baitadi.

## Timeliness and completeness of reporting from sentinel sites:

Code	Sentinel Sites	Timeliness (This Week)	Completeness (%)	Code	Sentinel Sites	Timeliness (This Week)	Completeness (%)
101	Mechi ZH, Jhapa	On time	100	138	DH, Solukhumbu	No reporting	25
102	Koshi H, Morang	No reporting	88	139	DH, Dolpa	No reporting	0
103	DH, Sunsari	On time	100	140	DH, Humla	No reporting	0
104	BPKIHS, Dharan	No reporting	94	201	L. Comm DH, Lamjung	On time	100
105	DH, Dhankuta	On time	100	202	DH, Dhading	On time	100
106	SZH, Saptari	On time	100	203	DH, Ramechhap	On time	100
107	RKUP Lahan, Siraha	On time	100	204	Bhaktapur Hospital	On time	100
108	DH, Siraha	On time	100	205	Patan Hospital, Lalitpur	On time	100
109	JZH, Dhanusha	No reporting	13	206	DH, Gorkha	On time	19
110	DH, Rautahat	No reporting	6	207	DH Trishuli, Nuwakot	No reporting	0
111	DH, Bara	On time	100	208	Charikot PHCC, Dolakha	On time	100
112	NH, Parsa	No reporting	50	209	Jiri H, Dolakha	On time	100
113	DH, Makwanpur	No reporting	44	210	DH, Syangja	On time	100
114	Bharatpur Hospital, Chitwan	On time	100	211	DH, Tanahun	No reporting	0
115	Kanti CH, Kathmandu	On time	100	212	PAHS/WRH, Kaski	On time	100
116	STIDH, Kathmandu	On time	100	213	DH, Myagdi	On time	100
117	UMH, Palpa	On time	100	214	DH, Gulmi	No reporting	88
118	PCH, Nawalparasi	On time	100	215	DZH, Baglung	No reporting	88
119	PBH, Kapilbastu	On time	100	216	DH, Parbat	No reporting	31
120	LPH, Rupandehi	No reporting	0	217	DH, Arghakhanchi	On time	100
121	RSRH Dang	No reporting	94	218	DH, Manang	No reporting	0
122	MWRH, Surkhet	On time	100	219	DH, Mustang	On time	31
123	BH, Banke	On time	100	220	DH, Pyuthan	On time	100
124	SZH, Kailali	On time	100	222	DH Rukum	On time	100
125	MZH, Kanchanpur	On time	100	223	DH Salyan	On time	100
126	DH, Doti	On time	100	229	DH, Achham	On time	100
127	DH, Bardiya	On time	100	230	DH, Baitadi	On time	100
128	DH, Mahottari	No reporting	0	231	DH, Darchula	On time	100
129	DH, Dadeldhura	On time	100	234	DH, Taplejung	No reporting	13
130	DH, Rasuwa	On time	100	235	DH, Panchthar	No reporting	6
131	DH, Sankhuwasabha	No reporting	0	236	DH, Terhathum	On time	19
132	AMDA Hosp., Jhapa	On time	100	237	DH, Bhojpur	On time	100
133	DH, Chautara	On time	100	238	DH, Khotang	No reporting	0
134	DH, Sarlahi	No reporting	19	301	Bayalpata Hosp., Achham	On time	100
135	DH, Sindhuli	On time	100	302	Tikapur Hospital, Kailali	On time	100
136	DH, Illam	On time	100			Excellent (>80)	
137	Dhulikhel Hos.	On time	100			Satisfactory (50-79)	
						Bad (<50)	

**Acknowledgement:** The Epidemiology and Disease Control Division highly acknowledges the contribution from all the medical recorders, EWARS focal persons, rapid response team members and technical support from WHO for preparation of this bulletin.

**Note:** EWARS reporting form (in MS Excel format) is available at EDCCD's official website [www.edcd.gov.np](http://www.edcd.gov.np). This bulletin is also available at the website.