

Early Warning and Reporting System (EWARS)

Weekly Bulletin

(18th Epidemiological Week)

12 May 2019



Government of Nepal
Ministry of Health and Population
Department of Health Services
Epidemiology and Disease Control Division
Kathmandu, Nepal
ewarsedcd@gmail.com

This bulletin includes the updates from the Early Warning and Reporting System (EWARS). It includes data since January 2019 till date, including comparison of same period during last year.

The Early Warning and Reporting System (EWARS)

Highlights

Cholera: One case of Cholera is reported this week by Teku hospital, Kathmandu and the case was from Tahachal, Kathmandu.

AGE: 264 cases of AGE are reported this week. The majority of these cases are from Saptari (28 cases), Achham (24 cases), Kailali (20 cases), Dolakha (15 cases) and Salyan (12 cases)

SARI: 115 cases of SARI are reported this week. The majority of these cases are from Morang (15 cases), Lalitpur (11 cases), Dhading (7 cases), Saptari (7 cases) and Sindhuli (7 cases).

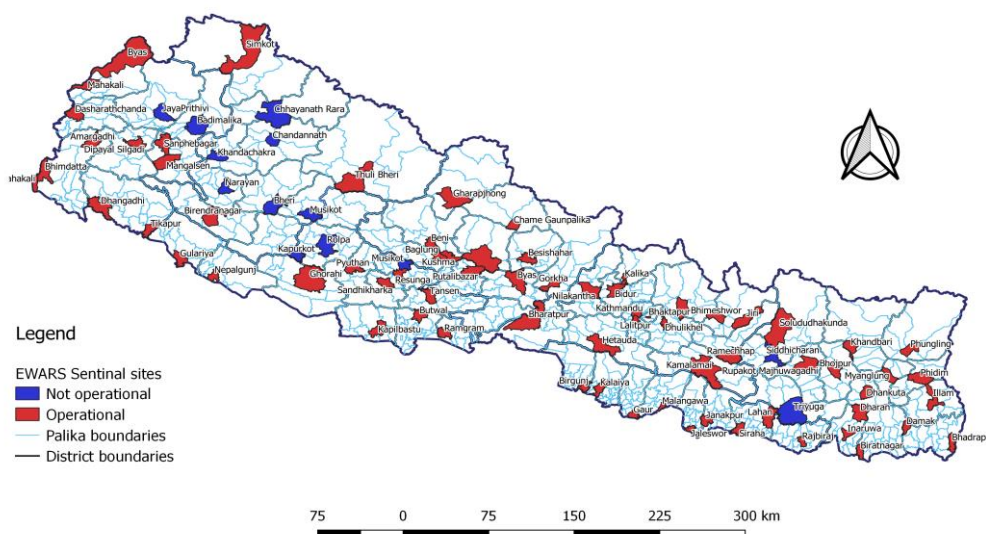
Dengue: One case of Dengue is reported this week by Bharatpur Hospital, Chitwan and the case was from Chitwan.

Kala-azar: Three cases of Kala-azar are reported this week, one each from Achham, Sankhuwasabha and Surkhet.

The EWARS was established in 1997 to strengthen the flow of information on vector-borne and other outbreak prone infectious diseases from the district to Epidemiology and Disease Control Division (EDCD) and Vector-Borne Disease Research and Training Center (VBDRTC), Hetauda. Rapid Response Teams (RRTs) can be mobilized at short notice to facilitate prompt outbreak response at Central, Regional and District level. RRTs can also support local level health institutions for investigation and outbreak control activities.

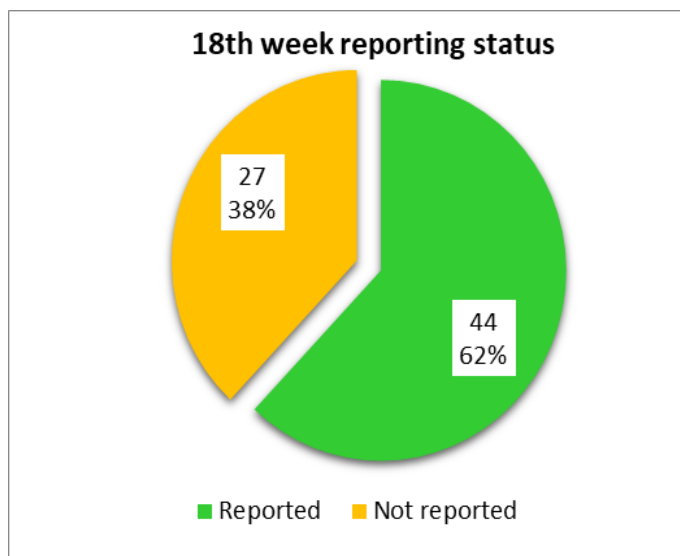
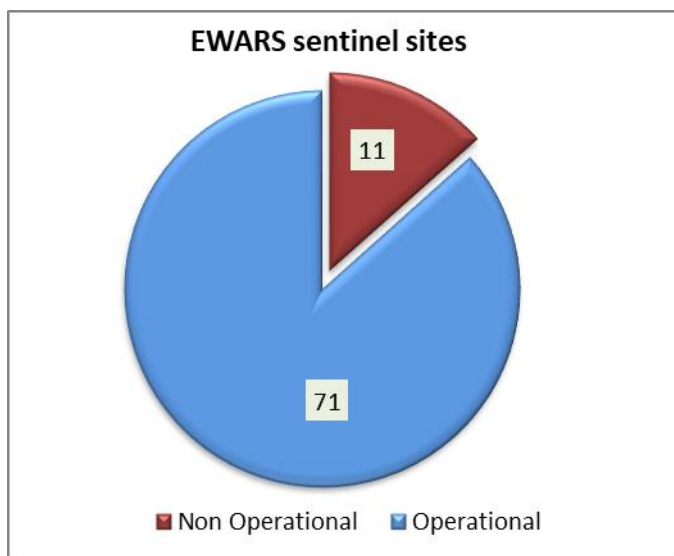
This information system is hospital-based and is currently operational in 71 hospitals (out of 82 sites) throughout Nepal (Figure 1). So far, the EWARS mainly focuses on the **weekly reporting** of number of cases and deaths (including "zero" reports) of six priority diseases/syndromes—Malaria, Kala-azar, Dengue, Acute Gastroenteritis (AGE), Cholera and Severe Acute Respiratory Infection (SARI), and other epidemic potential diseases/syndromes (like enteric fever). It equally focuses on **immediate reporting** (to be reported within 24 hours of diagnosis) of one confirmed case of Cholera, Kala-azar severe and complicated Malaria and one suspect/clinical case of Dengue as well as 5 or more cases of AGE and SARI from the same geographical locality in one-week period.

EWARS Sentinel Sites



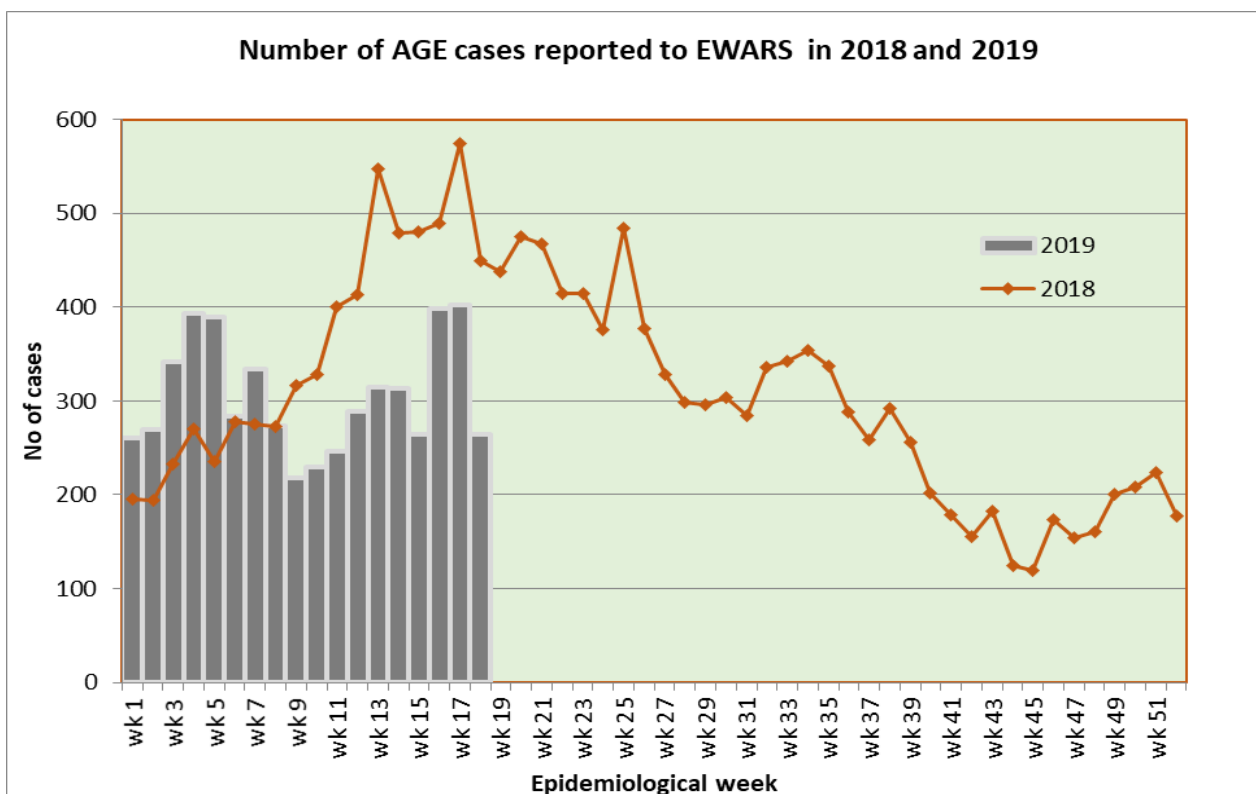
Reporting Status

Out of 71 functional EWARS sentinel sites, report was received from 44 sentinel sites (62%) whereas 27 sentinel sites did not report in the 18th epidemiological week of 2019.



1.1 Acute Gastro-Enteritis and Cholera

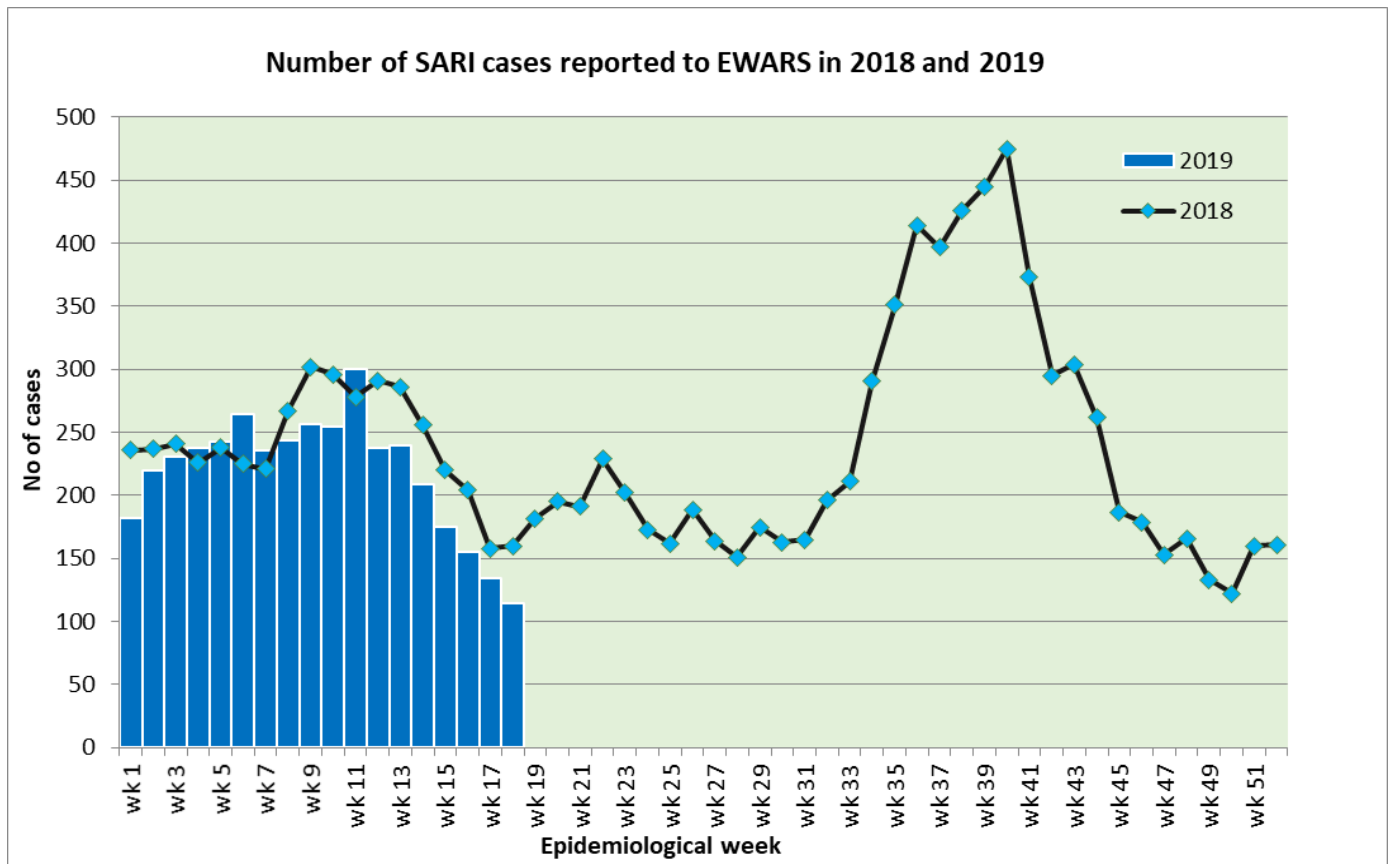
264 cases of AGE are reported in the 18th epidemiological week this year. The majority of these cases are from Saptari (28 cases), Achham (24 cases), Kailali (20 cases), Dolakha (15 cases) and Salyan (12 cases). 449 cases of AGE were reported this week in 2018.



Cholera: One case of Cholera is reported this week by Teku hospital, Kathmandu and the case was from Tahachal, Kathmandu.

1.2 Severe Acute Respiratory Infection (SARI)

115 cases of SARI are reported in the 18th epidemiological week this year. The majority of these cases are from Morang (15 cases), Lalitpur (11 cases), Dhading (7 cases), Saptari (7 cases) and Sindhuli (7 cases). 160 cases of SARI were reported this week in 2018.



1.3 Enteric Fever

28 cases of Enteric fever are reported this week. The majority of the cases are from Lamjung (4 cases), Kaski (4 cases) and Lalitpur (3 cases).

1.4 Malaria

No case of Malaria is reported this week. No case of Malaria was reported this week in 2018.

1.5 Dengue

One case of Dengue is reported this week by Bharatpur Hospital, Chitwan and the case was from Chitwan. No case of Dengue was reported this week in 2018.

1.6 Kala-azar

Three cases of Kala-azar are reported this week, one each from Achham, Sankhuwasabha and Surkhet. Three cases of Kala-azar were reported this week in 2018.

1.7 Scrub typhus

One case of Scrub typhus is reported this week by United Mission Hospital, Palpa and the case was from Palpa.

Timeliness and completeness of reporting from sentinel sites:

| Code | Sentinel Sites | Timeliness (This Week) | Completeness (%) | Code | Sentinel Sites | Timeliness (This Week) | Completeness (%) |
|------|-----------------------------|------------------------|------------------|------|---------------------------|------------------------|------------------|
| 101 | Mechi ZH, Jhapa | On time | 100 | 138 | DH, Solukhumbu | No reporting | 22 |
| 102 | Koshi H, Morang | On time | 100 | 139 | DH, Dolpa | No reporting | 0 |
| 103 | DH, Sunsari | On time | 100 | 140 | DH, Humla | No reporting | 0 |
| 104 | BPKIHS, Dharan | On time | 100 | 201 | L. Comm DH, Lamjung | On time | 100 |
| 105 | DH, Dhankuta | On time | 100 | 202 | DH, Dhading | On time | 100 |
| 106 | SZH, Saptari | On time | 100 | 203 | DH, Ramechhap | On time | 100 |
| 107 | RKUP Lahan, Siraha | No reporting | 94 | 204 | Bhaktapur Hospital | No reporting | 89 |
| 108 | DH, Siraha | On time | 100 | 205 | Patan Hospital, Lalitpur | On time | 100 |
| 109 | JZH, Dhanusha | No reporting | 11 | 206 | DH, Gorkha | No reporting | 17 |
| 110 | DH, Rautahat | No reporting | 6 | 207 | DH Trishuli, Nuwakot | No reporting | 0 |
| 111 | DH, Bara | On time | 100 | 208 | Charikot PHCC, Dolakha | On time | 100 |
| 112 | NH, Parsa | No reporting | 44 | 209 | Jiri H, Dolakha | On time | 100 |
| 113 | DH, Makwanpur | No reporting | 39 | 210 | DH, Syangja | On time | 100 |
| 114 | Bharatpur Hospital, Chitwan | On time | 100 | 211 | DH, Tanahun | No reporting | 0 |
| 115 | Kanti CH, Kathmandu | On time | 100 | 212 | PAHS/WRH, Kaski | On time | 100 |
| 116 | STIDH, Kathmandu | On time | 100 | 213 | DH, Myagdi | No reporting | 94 |
| 117 | UMH, Palpa | On time | 100 | 214 | DH, Gulmi | No reporting | 78 |
| 118 | PCH, Nawalparasi | On time | 100 | 215 | DZH, Baglung | On time | 100 |
| 119 | PBH, Kapilbastu | On time | 100 | 216 | DH, Parbat | No reporting | 28 |
| 120 | LPH, Rupandehi | No reporting | 0 | 217 | DH, Arghakhanchi | On time | 100 |
| 121 | RSRH Dang | No reporting | 94 | 218 | DH, Manang | No reporting | 0 |
| 122 | MWRH, Surkhet | On time | 100 | 219 | DH, Mustang | No reporting | 33 |
| 123 | BH, Banke | No reporting | 89 | 220 | DH, Pyuthan | On time | 100 |
| 124 | SZH, Kailali | On time | 100 | 222 | DH Rukum | No reporting | 89 |
| 125 | MZH, Kanchanpur | On time | 100 | 223 | DH Salyan | On time | 100 |
| 126 | DH, Doti | On time | 100 | 229 | DH, Achham | No reporting | 94 |
| 127 | DH, Bardiya | On time | 100 | 230 | DH, Baitadi | On time | 100 |
| 128 | DH, Mahottari | No reporting | 0 | 231 | DH, Darchula | On time | 100 |
| 129 | DH, Dadeldhura | On time | 100 | 234 | DH, Taplejung | On time | 28 |
| 130 | DH, Rasuwa | On time | 100 | 235 | DH, Panchthar | No reporting | 6 |
| 131 | DH, Sankhuwasabha | No reporting | 0 | 236 | DH, Terhathum | On time | 28 |
| 132 | AMDA Hosp., Jhapa | On time | 100 | 237 | DH, Bhojpur | On time | 100 |
| 133 | DH, Chautara | On time | 100 | 238 | DH, Khotang | No reporting | 0 |
| 134 | DH, Sarlahi | No reporting | 17 | 301 | Bayalpata Hosp., Achham | On time | 100 |
| 135 | DH, Sindhuli | On time | 100 | 302 | Tikapur Hospital, Kailali | No reporting | 94 |
| 136 | DH, Illam | On time | 100 | | | Excellent (>80) | |
| 137 | Dhulikhel Hos. | On time | 100 | | | Satisfactory (50-79) | |
| | | | | | | Bad (<50) | |

Acknowledgement: The Epidemiology and Disease Control Division highly acknowledges the contribution from all the medical recorders, EWARS focal persons, rapid response team members and technical support from WHO for preparation of this bulletin.

Note: EWARS reporting form (in MS Excel format) is available at EDCD's official website www.edcd.gov.np. This bulletin is also available at the website.