

Early Warning and Reporting System (EWARS)

# Weekly Bulletin

(23<sup>rd</sup> Epidemiological Week)

20 June 2016



**Government of Nepal**  
**Ministry of Health**  
**Department of Health Services**  
**Epidemiology and Disease Control Division**  
**Kathmandu, Nepal**  
[ewarsedcd@gmail.com](mailto:ewarsedcd@gmail.com)

This bulletin includes the updates from the Early Warning Reporting System (EWARS). It includes data since January 2015 till date, including comparison of same period during last year.

## Section 1: The Early Warning and Reporting System (EWARS)

### Highlights

- Two cases of Malaria (*plasmodium falciparum*) are reported this week, one each from Narayani Sub Regional Hospital, Parsa and District Hospital, Gorkha. One case is from Rautahat district and the other is from India.
- 5 cases of Kala-azar are reported this week, 3 from Koshi Zonal Hospital, Morang and one each from BPKIHS, Dharan and Surkaraj Tropical & Infectious Disease Hospital, Teku. The cases are from Morang and Palpa district.
- Two deaths from SARI are reported this week, one each from BPKIHS, Dharan and Seti Zonal Hospital, Kailali. The cases are from Sunsari district and Dadeldhura district respectively.
- The number of AGE cases is in decreasing order. However, last year the Cholera outbreak occurred on August, so it is important to remain alert for new outbreak.

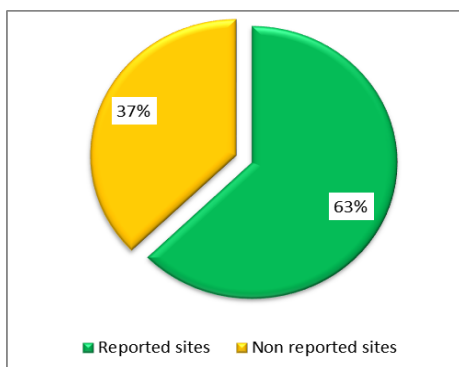
The EWARS was established in 1997 to strengthen the flow of information on vector-borne and other outbreak prone infectious diseases from the district to Epidemiology and Disease Control Division (EDCD) and Vector-Borne Disease Research and Training Center (VBDRTC), Hetauda. Rapid Response Teams (RRTs) can be mobilized at short notice to facilitate prompt outbreak response at Central, Regional and District level. They can also support local level health institutions for investigation and outbreak control activities.

This information system is hospital-based and is currently operational in 49 hospitals (out of 81 sites) throughout Nepal (Figure 1). So far, the EWARS mainly focuses on the **weekly reporting** of number of cases and deaths (including "zero" reports) of six priority diseases/syndromes—Malaria, Kala-azar, Dengue, Acute Gastroenteritis (AGE), Cholera and Severe Acute Respiratory Infection (SARI), and other epidemic potential diseases/syndromes (like enteric fever). It equally focuses on **immediate reporting** (to be reported within 24 hours of diagnosis) of one confirmed case of Cholera, Kala-azar severe and complicated Malaria and one suspect/clinical case of Dengue as well as 5 or more cases of AGE and SARI from the same geographical locality in one week period.



## Reporting Status

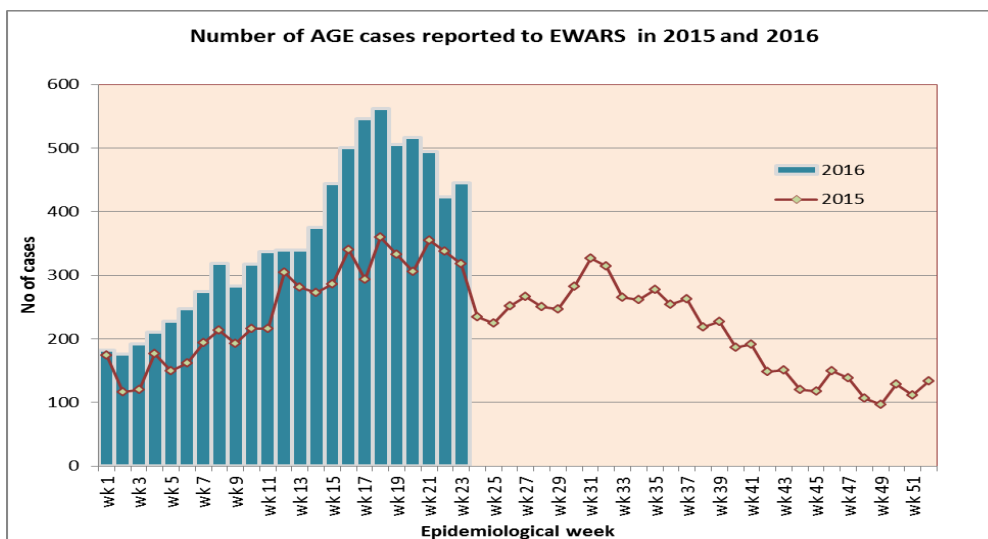
Out of 51 functional EWARS sentinel sites, report was received from 32 sentinel sites (62 percent) whereas 19 sentinel sites did not report in 23<sup>rd</sup> Epidemiological week. The reporting coverage is increased as compared to the previous week.



### 1.1 Acute Gastro-Enteritis and Cholera

445 cases of AGE are reported in 23<sup>rd</sup> epidemiological week of 2016. Among 445 cases, the majority of cases are from Parsa (45 cases), Dhading (41 cases), Kanchanpur (31 cases), Kathmandu (28 cases), Dolakha (26 cases), Bara (23 cases) and Gorkha (22 cases) district. The number of AGE cases reported in 23<sup>rd</sup> week this year is same as the number of AGE cases reported in the same week last year (318 cases). No death from AGE is reported this week. Five deaths from AGE are reported so far this year.

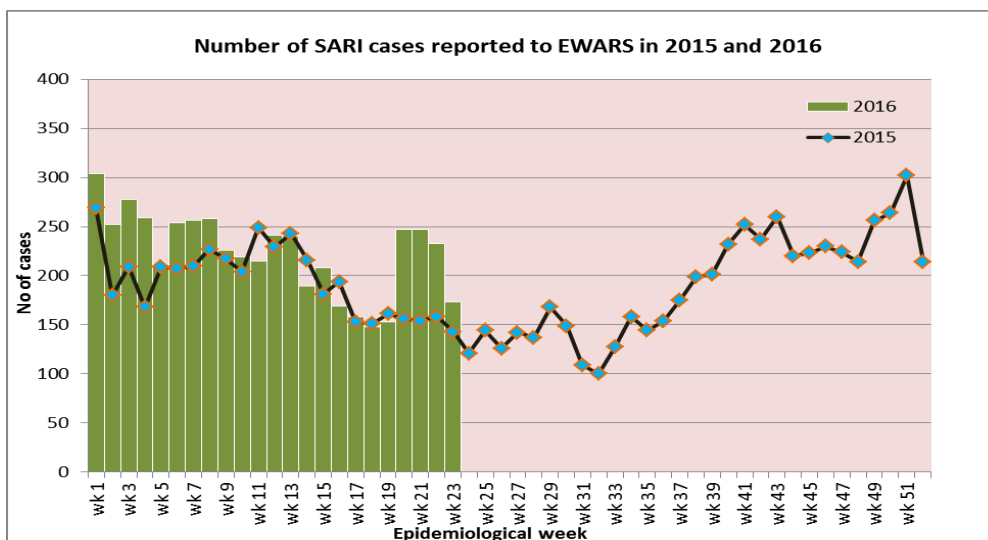
**Cholera:** No cholera cases are reported through the EWARS system this year. Last year, the Cholera outbreak occurred on August, so it is important to remain alert for new outbreak.



### 1.2 Severe Acute Respiratory Infection (SARI)

173 cases of SARI are reported in 23<sup>rd</sup> epidemiological week of 2016. The cases of SARI reported this week exceed the number reported in the same week last year (143 cases). Among 173 cases, the majority of cases are from Gorkha (30 cases), Jhapa (18 cases), Rupandehi (10 cases), Lalitpur (10 cases), Morang (9 cases), Makwanpur (8 cases), Sunsari (8 cases) district.

Two deaths from SARI are reported this week, one each from BPKIHS, Dharan and Seti Zonal Hospital, Kailali. The cases are from Sunsari district and Dadeldhura district respectively. Thirty seven deaths from SARI are reported so far this year.



### 1.3 Enteric Fever

50 cases of enteric fever are reported this week including 8 from Lamjung, 6 from Tanahu, 5 from Nawalparasi and 3 each from Bara, Dhading, Jhapa, Parsa and Surkhet district. The number of cases of enteric fever was peaked in week 37 in 2015 (71 cases).

### 1.4 Malaria

Two cases of Malaria (*plasmodium falciparum*) are reported this week, one each from Narayani Sub Regional Hospital, Parsa and District Hospital, Gorkha. One case is from Rautahat district and the other from India. Only eleven cases of malaria are reported so far this year. Ninety cases of Malaria were reported through EWARS in 2015.

### 1.5 Dengue

No case of Dengue is reported this week. Only one case of dengue is reported so far this year. Fifty-eight cases of Dengue were reported through EWARS in 2015.

### 1.6 Kala-azar

5 cases of Kala-azar are reported this week, 3 from Koshi Zonal Hospital, Morang and one each from BPKIHS, Dharan and Surkaraj Tropical & Infectious Disease Hospital, Teku. The cases are from Morang and Palpa district.

### Acknowledgement

The Epidemiology and Disease Control Division highly acknowledges the contribution from all the medical recorders, EWARS focal persons, rapid response team members and support from WHO and NHSSP for preparation of this bulletin.

## Timeliness & completeness of reporting from sentinel sites:

Site Code	Sentinel Sites	Timeliness (%)	Completeness (%)	Site code	Sentinel Sites	Timeliness (%)	Completeness (%)
101	Mechi ZH, Jhapa	90	95	127	DH, Bardiya	84	100
102	Koshi ZH, Morang	98	100	128	DH, Mahottari	86	91
103	DH, Sunsari	100	100	129	DH, Dadedhura	0	0
104	BPKIHS, Dharan	88	100	130	DH, Rasuwa	82	100
105	DH, Dhankuta	90	82	131	DH, Sankhuwasabha	0	0
106	SZH, Saptari	96	95	132	AMDA Hosp., Jhapa	98	95
107	RKUP, Lahan, Siraha	92	100	133	DH, Chautara	100	100
108	DH, Siraha	100	100	134	DH, Sarlahi	70	100
109	JZH, Dhanusha	4	100	135	DH, Sindhuli	70	52
110	DH, Rautahat	78	91	136	DH, Illam	92	100
111	DH, Bara	0	0	137	Dhulikhel H., Kavre	96	100
112	NSRH, Parsa	74	100	138	DH, Solukhumbu	6	100
113	DH, Makawanpur	86	100	139	DH, Dolpa	0	0
114	NZH, Chitwan	68	65	140	DH, Humla	0	0
115	Kanti CH, Kathmandu	72	100	201	Lamjung Comm DH, Lamjung	86	95
116	STH, Kathmandu	98	100	202	DH, Dhading	98	100
117	UMH, Palpa	94	95	203	DH, Ramechhap	98	100
118	PCH, Nawalparasi	94	100	204	Bhaktapur Hospital	0	0
119	PBH, Kapilvastu	98	100	205	Patan Hospital, Lalitpur	18	69
120	LZH, Rupandehi	100	100	206	DH, Gorkha	6	17
121	RSRH Dang	6	95	207	DH Trishuli, Nuwakot	4	8
122	MWRH, Surkhet	94	100	208	Charikot PHCC, Dholakha	16	82
123	BZH, Banke	0	0	209	Jiri H, Dolakha	72	60
124	SZH, Kailali	74	69	211	DH, Tanahun	88	86
125	MZH, Kanchanpur	98	100	212	WRH, Kaski	90	100
126	DH, Doti	86	91	215	DZH, Baglung	14	30

	Excellent (>80)
	Satisfactory (50-79)
	Bad (<50)

**Note:** EWARS reporting form (in MS Excel format) is available at EDCD's official website [www.edcd.gov.np](http://www.edcd.gov.np). This bulletin is also available at the website.