

Early Warning and Reporting System (EWARS)- Weekly Bulletin: Nepal

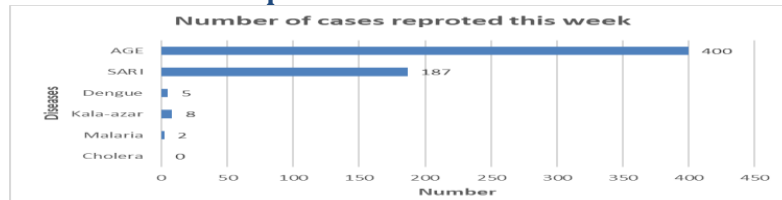
23rd Epidemiological Week, 2022

19th June, 2022

Highlights

- 979362 cases of Coronavirus disease (COVID-19) have been confirmed in Nepal, of which 967300 cases have been recovered so far.
- Of the reported cases, Acute Gastro-Enteritis (AGE) is the leading cause of morbidity in week 23.

Number of cases reported for each disease this week

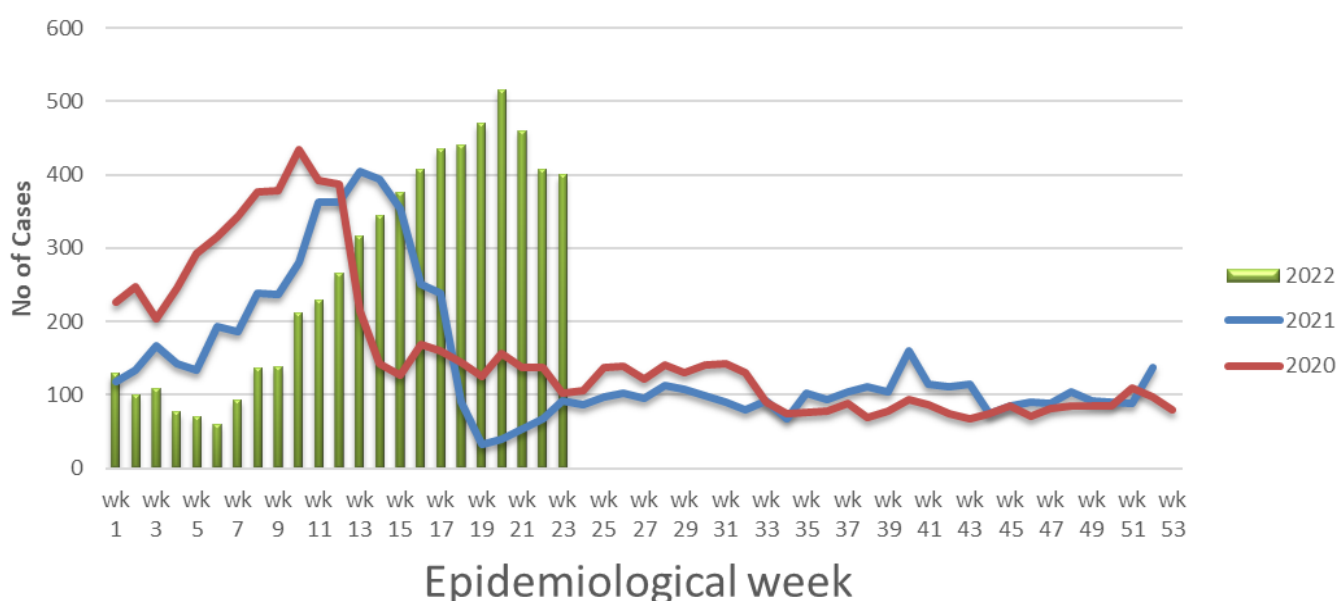


Note: This bulletin includes data since January 2021 till date, including comparison of the same period last year. Since, May 2019, 36 new sentinel sites (including public hospitals, private hospitals, and medical colleges) were added and were gradually oriented and started reporting, thus increasing the number of reporting sites. The current number of sentinel sites is 118.

1. Acute Gastro-Enteritis (AGE)

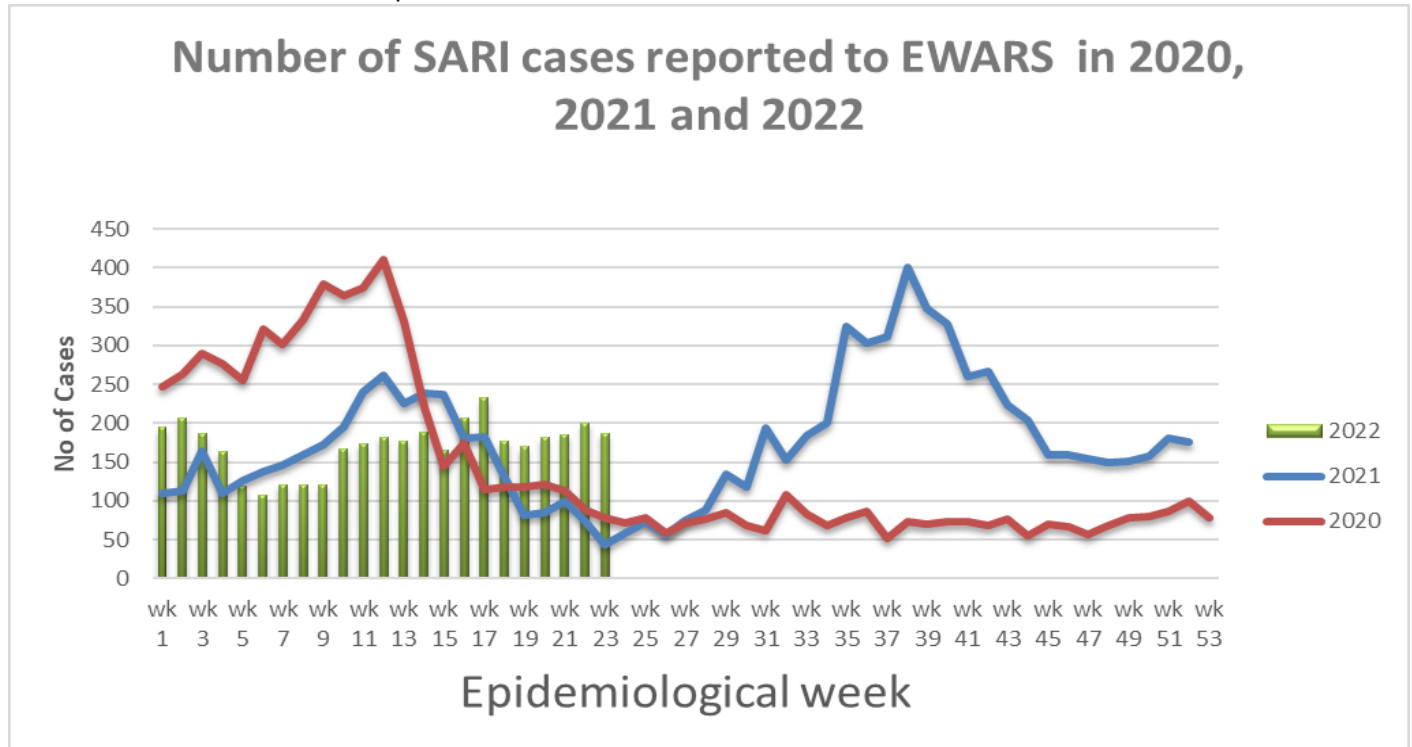
- 400 cases of AGE were reported this week. Most of these cases were reported from Kapilbastu (36 cases), Kathamndu (33 cases), Rupandehi (31 cases), Bara, Dang, and Parsa (27 cases from each districts), Bhaktapur (18 cases), Lalitpur (17 cases), Bardiya (15 cases), Okhaldhunga (13 cases), Bajhang (9 cases), Jumla, Surkhet, and Jhapa (8 cases from each districts), Sunsari (7 cases), Taplejung, Kanchanpur, Darchula, Achham, Khotang, and Gorkha (6 cases from each districts), Rukum West (5 cases), Doti, Dhanusa, Palpa, Dailekh, Sankhuwasabha, and Lamjung (4 cases from each districts.)
- 97 cases of AGE were reported this week in 2021.

Number of AGE cases reported to EWARS in 2020, 2021 and 2022



2. Severe Acute Respiratory Infection (SARI)

- 187 cases of SARI were reported this week. Most of these cases were reported from Jhapa (26 cases), Morang (19 cases), Surkhet (17 cases), Rupandehi (13 cases), Dailekh, and Sunsari (8 cases from each districts), Baitadi (7 cases), Saptari, Dhankuta (6 cases from each districts), Lalitpur (5 cases from each districts), Darchula, Chitawan, Jumla, baglung, Nawalaparasi East, and Nawalparasi West (4 cases from each districts).
- 45 cases of SARI were reported this week in 2021.



3. Malaria

- Two case of malaria (Malaria Vivax) was reported this week; one each case from Surkhet, and Salyan districts.
- Two cases of malaria were reported this week in 2021.

4. Dengue

- Five cases of dengue were reported this week; One each case from Gulmi, Okhaldhunga, Darchula, Lalitpur, and Lamjung districts.
- Three cases of dengue were reported this week in 2021.

5. Kala-azar

- Eight cases of kala-azar were reported this week. Most of these cases were reported from Baitidi (3 cases), One each case from Surkhet, Bajura, Palpa, Okhaldhunga, Kalikot districts.
- Four cases of kala-azar were reported this week in 2021.

6. Cholera

- Zero case of Cholera was reported this week
- Zero case of Cholera was reported this week in 2021.

Other diseases

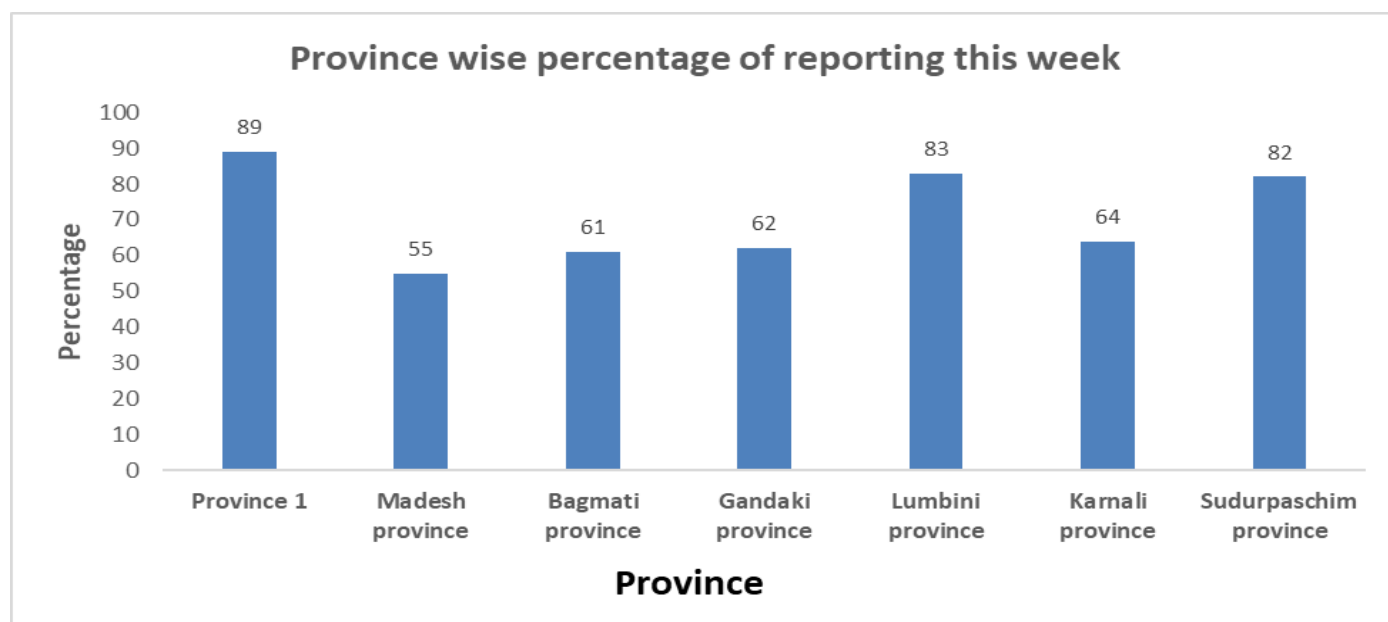
Scrub typhus

- 29 cases of scrub typhus were reported this week. Most of the cases were reported from Darchula (10 cases), Palpa, and Bardiya (3 cases from each districts), Gulmi, Okhaldhunga, and Morang (2 cases form each districts), and One each cases from Lalitpur, Khotang, Bhojpur, Udayapur, Kanchanpur, Sarlahi, and Kathmandu districts.
- Seven cases of scrub typhus were reported this week in 2021.

Table: Comparison with previous week by diseases, 2022

Disease	Week 23	Week 22
AGE	400	408
SARI	187	200
Malaria	2	3
Kala-azar	8	4
Dengue	5	7
Cholera	0	0

Province wise reporting status:



Acknowledgement: The Epidemiology and Disease Control Division (EDCD) highly acknowledges the contribution from all the sentinel sites, medical recorders, EWARS focal persons, rapid response team members and technical support from WHO and GIZ for preparation of this bulletin.

Note: This bulletin is also available at the EDCCD website (please click [here](#)). Other information can also be accessed at the website www.edcd.gov.np. Thank you.



Government of Nepal
Ministry of Health and Population
Department of Health Services
Epidemiology and Disease Control Division
Kathmandu, Nepal