

Early Warning and Reporting System (EWARS)

# Weekly Bulletin

(24<sup>th</sup> Epidemiological Week)

26 June 2016



**Government of Nepal**  
**Ministry of Health**  
**Department of Health Services**  
**Epidemiology and Disease Control Division**  
**Kathmandu, Nepal**  
[ewarsedcd@gmail.com](mailto:ewarsedcd@gmail.com)

This bulletin includes the updates from the Early Warning Reporting System (EWARS). It includes data since January 2015 till date, including comparison of same period during last year.

## Section 1: The Early Warning and Reporting System (EWARS)

### Highlights

- One case of Malaria (*plasmodium vivax*) is reported this week from District Hospital, Dhading and the case is from Khalte VDC of Dhading District.
- One case of Kala-azar is reported this week from District Hospital, Siraha and the case is from Siraha district.
- Two deaths from SARI are reported this week from Lumbini Zonal Hospital, Rupandehi and the cases are from Butwal municipality and Gajedi VDC of Rupandehi district.
- The number of AGE cases is in decreasing order. However, last year the Cholera outbreak occurred on August, so it is important to remain alert for new outbreak.

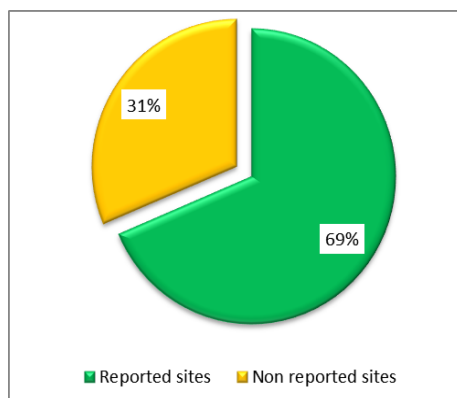
The EWARS was established in 1997 to strengthen the flow of information on vector-borne and other outbreak prone infectious diseases from the district to Epidemiology and Disease Control Division (EDCD) and Vector-Borne Disease Research and Training Center (VBDRTC), Hetauda. Rapid Response Teams (RRTs) can be mobilized at short notice to facilitate prompt outbreak response at Central, Regional and District level. They can also support local level health institutions for investigation and outbreak control activities.

This information system is hospital-based and is currently operational in 49 hospitals (out of 81 sites) throughout Nepal (Figure 1). So far, the EWARS mainly focuses on the **weekly reporting** of number of cases and deaths (including "zero" reports) of six priority diseases/syndromes—Malaria, Kala-azar, Dengue, Acute Gastroenteritis (AGE), Cholera and Severe Acute Respiratory Infection (SARI), and other epidemic potential diseases/syndromes (like enteric fever). It equally focuses on **immediate reporting** (to be reported within 24 hours of diagnosis) of one confirmed case of Cholera, Kala-azar severe and complicated Malaria and one suspect/clinical case of Dengue as well as 5 or more cases of AGE and SARI from the same geographical locality in one week period.



## Reporting Status

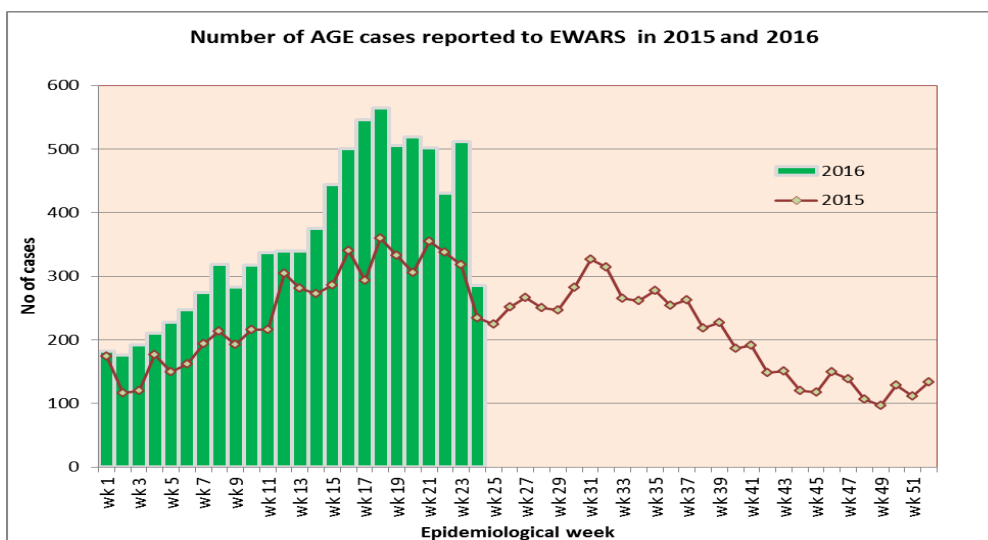
Out of 51 functional EWARS sentinel sites, report was received from 35 sentinel sites (69 percent) whereas 16 sentinel sites did not report in 24<sup>th</sup> Epidemiological week. The reporting coverage is increased as compared to the previous week.



### 1.1 Acute Gastro-Enteritis and Cholera

288 cases of AGE are reported in 24<sup>th</sup> epidemiological week of 2016. Among 288 cases, the majority of cases are from Dhading (46 cases), Rupandehi (26 cases), Bardiya (22 cases), Kathmandu (21 cases), Kapilvastu (16 cases), Nawalparasi (15 cases), Dolakha (11 cases) and Mahottari (11 cases) district. The number of AGE cases reported in 24<sup>th</sup> week this year slightly exceeds the number of AGE cases reported in the same week last year (235 cases). No death from AGE is reported this week. Five deaths from AGE are reported so far this year.

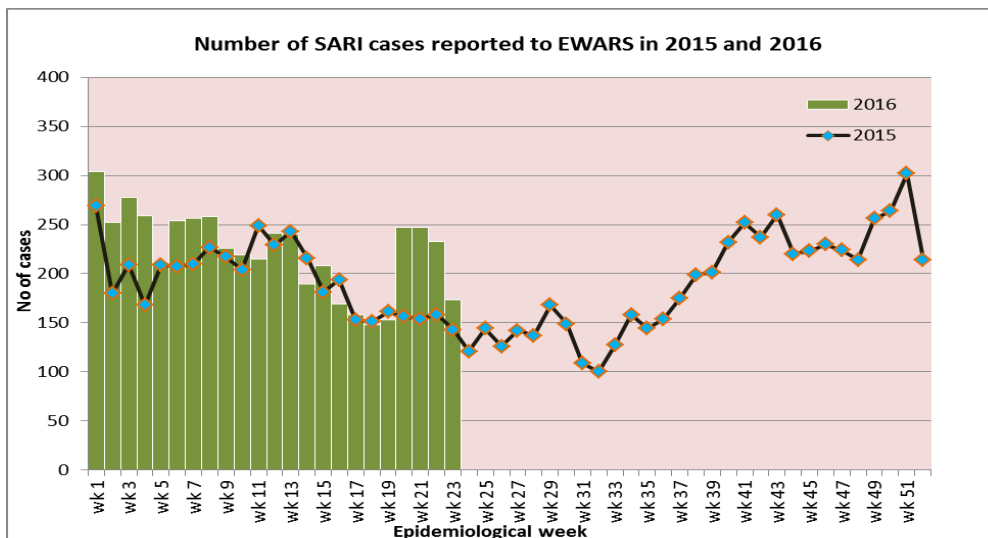
**Cholera:** No cholera cases are reported through the EWARS system this year. Last year, the Cholera outbreak occurred on August, so it is important to remain alert for new outbreak.



### 1.2 Severe Acute Respiratory Infection (SARI)

129 cases of SARI are reported in 24<sup>th</sup> epidemiological week of 2016. The cases of SARI reported this week slightly exceed the number reported in the same week last year (121 cases). Among 129 cases, the majority of cases are from Rupandehi (25 cases), Jhapa (16 cases), Lalitpur (10 cases), Kapilvastu (8 cases), Saptari (8 cases), Gorkha (7 cases) and Dhading (7 cases) district.

Two deaths from SARI are reported this week, from Lumbini Zonal Hospital, Rupandehi and the cases are from Butwal municipality and Gajedi VDC of Rupandehi district. Fourty deaths from SARI are reported so far this year.



### 1.4 Malaria

One case of Malaria (*plasmodium vivax*) is reported this week from District Hospital, Dhading and the case is from Khalte VDC of Dhading District. Only twelve cases of malaria are reported so far this year. Ninety cases of Malaria were reported through EWARS in 2015.

### 1.5 Dengue

No case of Dengue is reported this week. Only one case of dengue is reported so far this year. Fifty-eight cases of Dengue were reported through EWARS in 2015.

### 1.6 Kala-azar

One case of Kala-azar is reported this week from District Hospital, Siraha and the case is from Siraha district.

### Acknowledgement

The Epidemiology and Disease Control Division highly acknowledges the contribution from all the medical recorders, EWARS focal persons, rapid response team members and support from WHO and NHSSP for preparation of this bulletin.

## Timeliness & completeness of reporting from sentinel sites:

Site Code	Sentinel Sites	Timeliness	Completeness (%)	Site code	Sentinel Sites	Timeliness (%)	Completeness (%)
101	Mechi ZH, Jhapa	On time	100	127	DH, Bardiya	On time	100
102	Koshi ZH, Morang	On time	100	128	DH, Mahottari	On time	100
103	DH, Sunsari	On time	100	129	DH, Dadeldhura	No reporting	0
104	BPKIHS, Dharan	No reporting	95	130	DH, Rasuwa	No reporting	95
105	DH, Dhankuta	No reporting	79	131	DH, Sankhuwasabha	No reporting	0
106	SZH, Saptari	On time	100	132	AMDA Hosp., Jhapa	On time	100
107	RKUP, Lahan, Siraha	No reporting	95	133	DH, Chautara	On time	100
108	DH, Siraha	Late reporting	100	134	DH, Sarlahi	On time	100
109	JZH, Dhanusha	Late reporting	100	135	DH, Sindhuli	Late reporting	83
110	DH, Rautahat	Late reporting	100	136	DH, Illam	On time	100
111	DH, Bara	No reporting	0	137	Dhulikhel H., Kavre	On time	100
112	NSRH, Parsa	No reporting	95	138	DH, Solukhumbu	On time	100
113	DH, Makawanpur	Late reporting	100	139	DH, Dolpa	No reporting	0
114	NZH, Chitwan	No reporting	62	140	DH, Humla	No reporting	0
115	Kanti CH, Kathmandu	No reporting	95	201	Lamjung Comm DH, Lamjung	On time	100
116	STH, Kathmandu	On time	100	202	DH, Dhading	On time	100
117	UMH, Palpa	On time	100	203	DH, Ramechhap	On time	100
118	PCH, Nawalparasi	On time	100	204	Bhaktapur Hospital	No reporting	0
119	PBH, Kapilvastu	On time	100	205	Patan Hospital, Lalitpur	On time	70
120	LZH, Rupandehi	On time	100	206	DH, Gorkha	On time	20
121	<b>RSRH Dang</b>	No reporting	91	207	DH Trishuli, Nuwakot	No reporting	8
122	MWRH, Surkhet	On time	100	208	Charikot PHCC, Dholakha	On time	82
123	BZH, Banke	No reporting	0	209	Jiri H, Dolakha	Late reporting	70
124	SZH, Kailali	Late reporting	62	211	DH, Tanahun	On time	86
125	MZH, Kanchanpur	No reporting	95	212	WRH, Kaski	On time	100
126	DH, Doti	No reporting	87	215	DZH, Baglung	On time	37

	Excellent (>80)
	Satisfactory (50-79)
	Bad (<50)

**Note:** EWARS reporting form (in MS Excel format) is available at EDCD's official website [www.edcd.gov.np](http://www.edcd.gov.np). This bulletin is also available at the website.