

Early Warning and Reporting System (EWARS)- Weekly Bulletin: Nepal

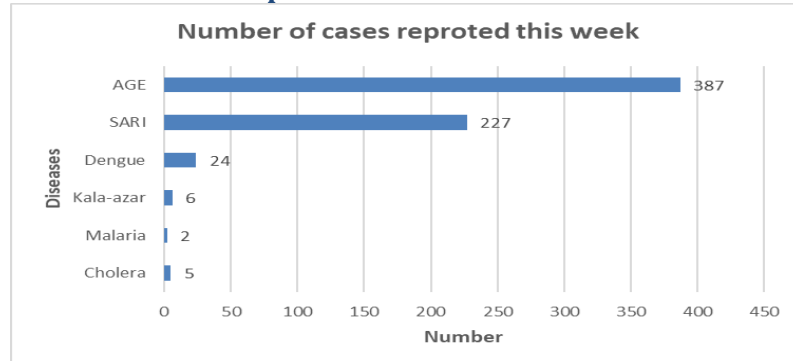
26th Epidemiological Week, 2022

10th July, 2022

Highlights

- 980317 cases of Coronavirus disease (COVID-19) have been confirmed in Nepal, of which 967687 cases have been recovered so far.
- Of the reported cases, Acute Gastro-Enteritis (AGE) is the leading cause of morbidity in week 26.
- The total cholera cases reported since date 16th June 2022 (2079/3/2) are 27 cases till date i.e. 9th July 2022 (2079/3/25) with no deaths.

Number of cases reported for each disease this week

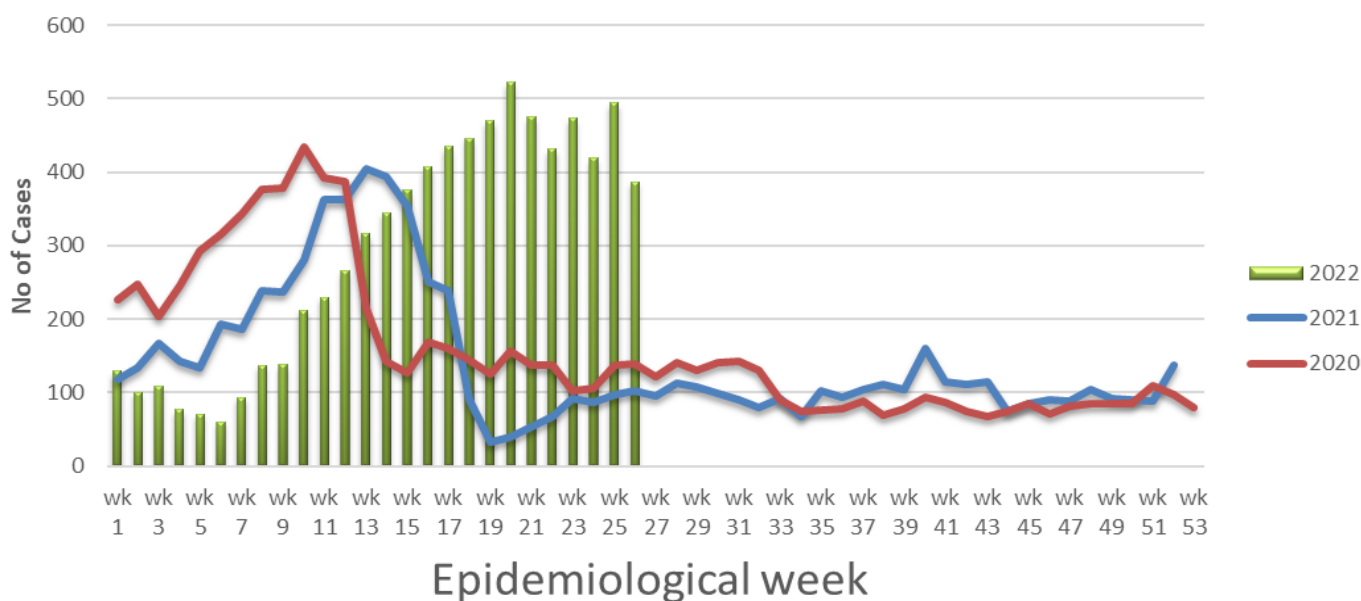


Note: This bulletin includes data since January 2021 till date, including comparison of the same period last year. Since, May 2019, 36 new sentinel sites (including public hospitals, private hospitals, and medical colleges) were added and were gradually oriented and started reporting, thus increasing the number of reporting sites. The current number of sentinel sites is 118.

1. Acute Gastro-Enteritis (AGE)

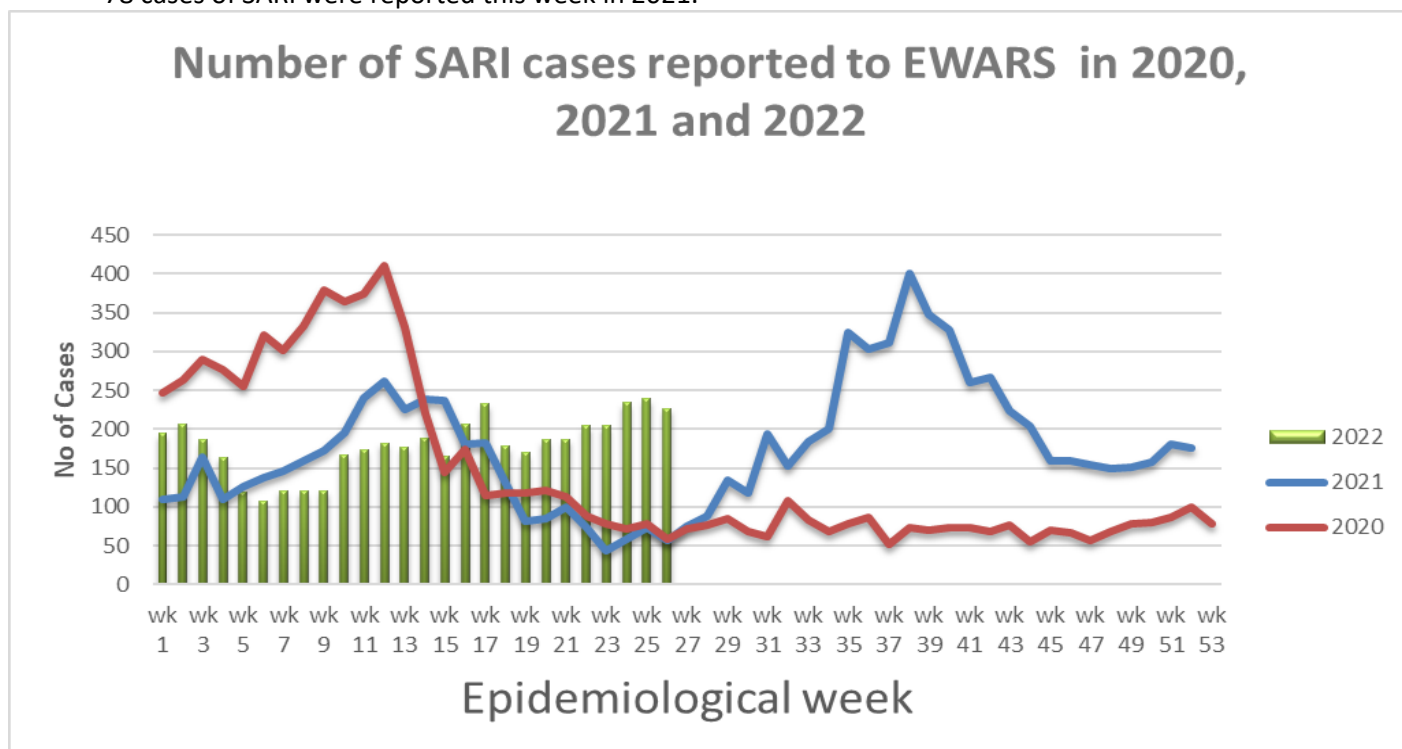
- 387 cases of AGE were reported this week. Most of these cases were reported from Lalitpur (55 cases), Kathmandu (42 cases), Kapilbastu (23 cases), Bhaktapur (20 cases), Gorkha, and Dnag (17 cases from each districts), Parsa, and Bara (12 cases from each districts), Surkhet (9 cases), Dolakha, and Jumla (8 cases from each districts), Rupandehi, Lumjung, Jhapa, Dhanusa, Okhaldhunga, and Kailali (6 cases from each districts), Rukum West, Palpa, Bajura, Darchula, and Sarlahi (5 cases from each districts).
- 108 cases of AGE were reported this week in 2021.

Number of AGE cases reported to EWARS in 2020, 2021 and 2022



2. Severe Acute Respiratory Infection (SARI)

- 227 cases of SARI were reported this week. Most of these cases were reported from Jhapa (25 cases), Ruandehi (24 cases), Sunsari, surkhet (13 cases from each districts), Dhankuta (12 cases), Kathamndu, and Morang (11 cases from each districts), Udayapur (10 cases), Chitawan (8 cases), Palpa (7 cases), Lalitpur (6 cases), Jumla, Saptari, Darchula, Nawalparasi West (5 cases from each districts).
- 78 cases of SARI were reported this week in 2021.



3. Malaria

- Two cases of malaria (Malaria Vivax; 1 and Falciparum; 1) were reported this week; One each case was reported from Banke and Saptari districts.
- One case of malaria was reported this week in 2021.

4. Dengue

- 24 cases of dengue were reported this week. Most of these cases were reported from Rupandehi (5 cases), Sankhuwasabha, and Dhading (4 cases from each district), Chitawan (2 cases), and one each case from Achham, Palpa, Arghakhanchi, Kailali, Lalitpur, Ilam, Sindhuli, Pyuthan, and Syangja districts.
- Nine cases of dengue were reported this week in 2021.

Note: Two dengue cases were reported from Non-Sentinel site.

5. Kala-azar

- Six cases of kala-azar were reported this week. Most of these cases were reported from Baitadi, and Saptari (2 cases from each districts), and one each case from Panchthar, and Kalikot districts.
- Two cases of kala-azar were reported this week in 2021.

6. Cholera

- Five cases of Cholera were reported this week (i.e. week 26). Most of the case was reported from Kathmandu (5 cases).
- Zero case of Cholera was reported this week in 2021.

Other diseases

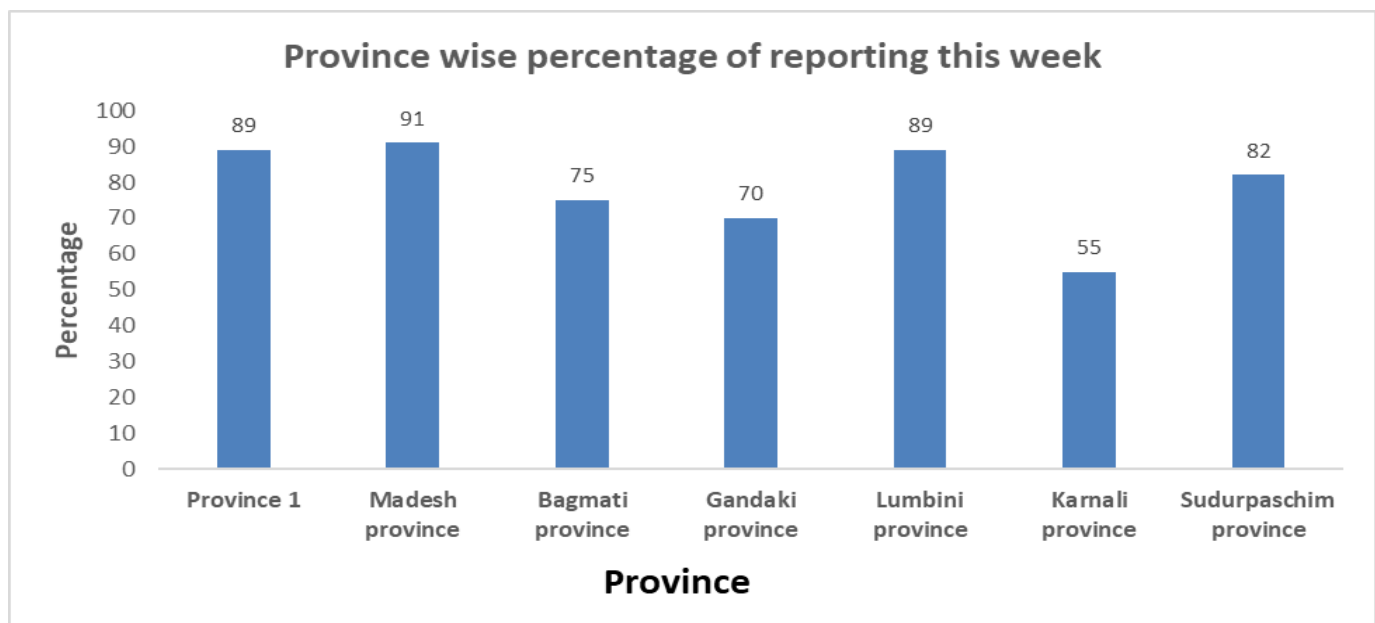
Scrub typhus

- 37 cases of scrub typhus were reported this week. Most of the cases were reported from Dadeldhura (11 cases), Sankhuwasabha (5 cases), Dang and Baitadi (3 cases from each district), Dhading and Tanahu (2 cases from each district).
- 24 cases of scrub typhus were reported this week in 2021.

Table: Comparison with previous week by diseases, 2022

Disease	Week 26	Week 25
AGE	387	494
SARI	227	239
Malaria	2	3
Kala-azar	6	6
Dengue	24	41
Cholera	5	7

Province wise reporting status:



Acknowledgement: The Epidemiology and Disease Control Division (EDCD) highly acknowledges the contribution from all the sentinel sites, medical recorders, EWARS focal persons, rapid response team members and technical support from WHO and GIZ for preparation of this bulletin.

Note: This bulletin is also available at the EDCD website (please click [here](#)). Other information can also be accessed at the website www.edcd.gov.np. Thank you.



Government of Nepal
Ministry of Health and Population
Department of Health Services
Epidemiology and Disease Control Division
Kathmandu, Nepal