

Early Warning and Reporting System (EWARS)- Weekly Bulletin: Nepal

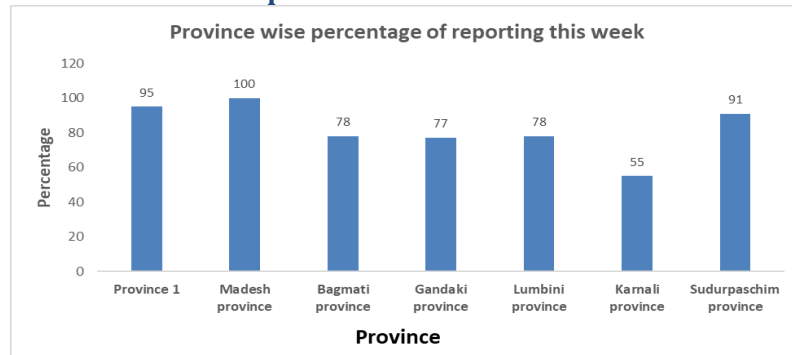
27th Epidemiological Week, 2022

17th July, 2022

Highlights

- 981408 cases of Coronavirus disease (COVID-19) have been confirmed in Nepal, of which 968016 cases have been recovered so far.
- Of the reported cases, Acute Gastro-Enteritis (AGE) is the leading cause of morbidity in week 27.
- The total cholera cases reported since date 16th June 2022 (2079/3/2) are 30 cases till date i.e. 16th July 2022 (2079/3/32) with no deaths.

Number of cases reported for each disease this week

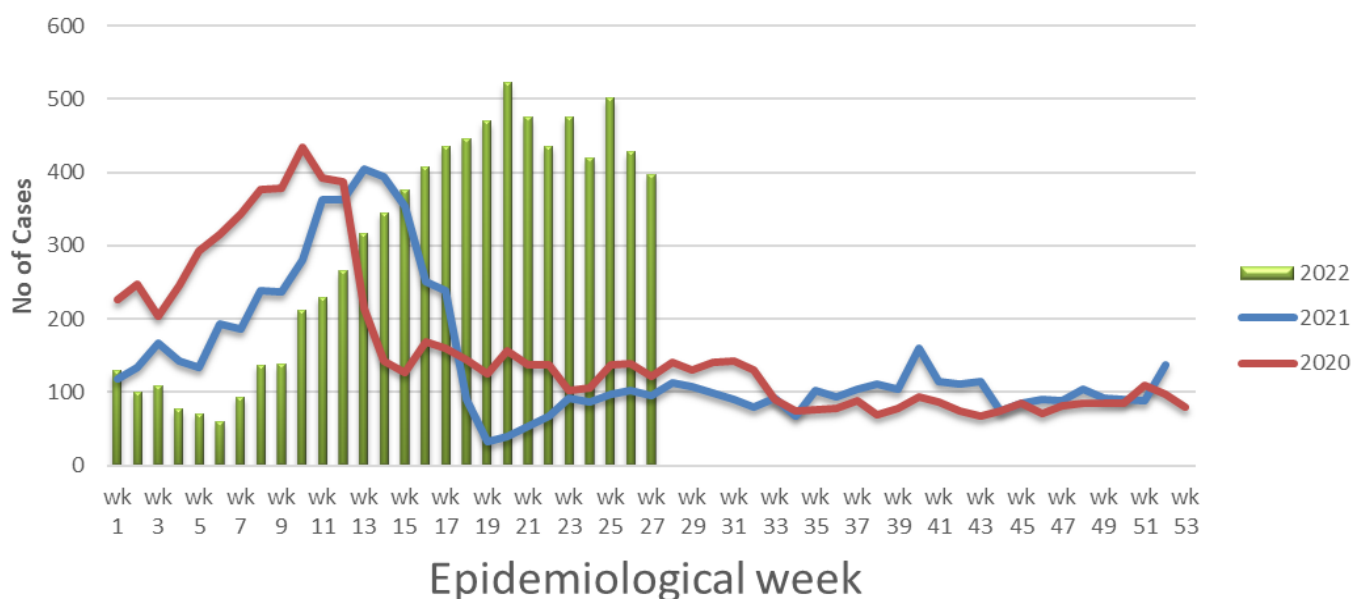


Note: This bulletin includes data since January 2021 till date, including comparison of the same period last year. Since, May 2019, 36 new sentinel sites (including public hospitals, private hospitals, and medical colleges) were added and were gradually oriented and started reporting, thus increasing the number of reporting sites. The current number of sentinel sites is 118.

1. Acute Gastro-Enteritis (AGE)

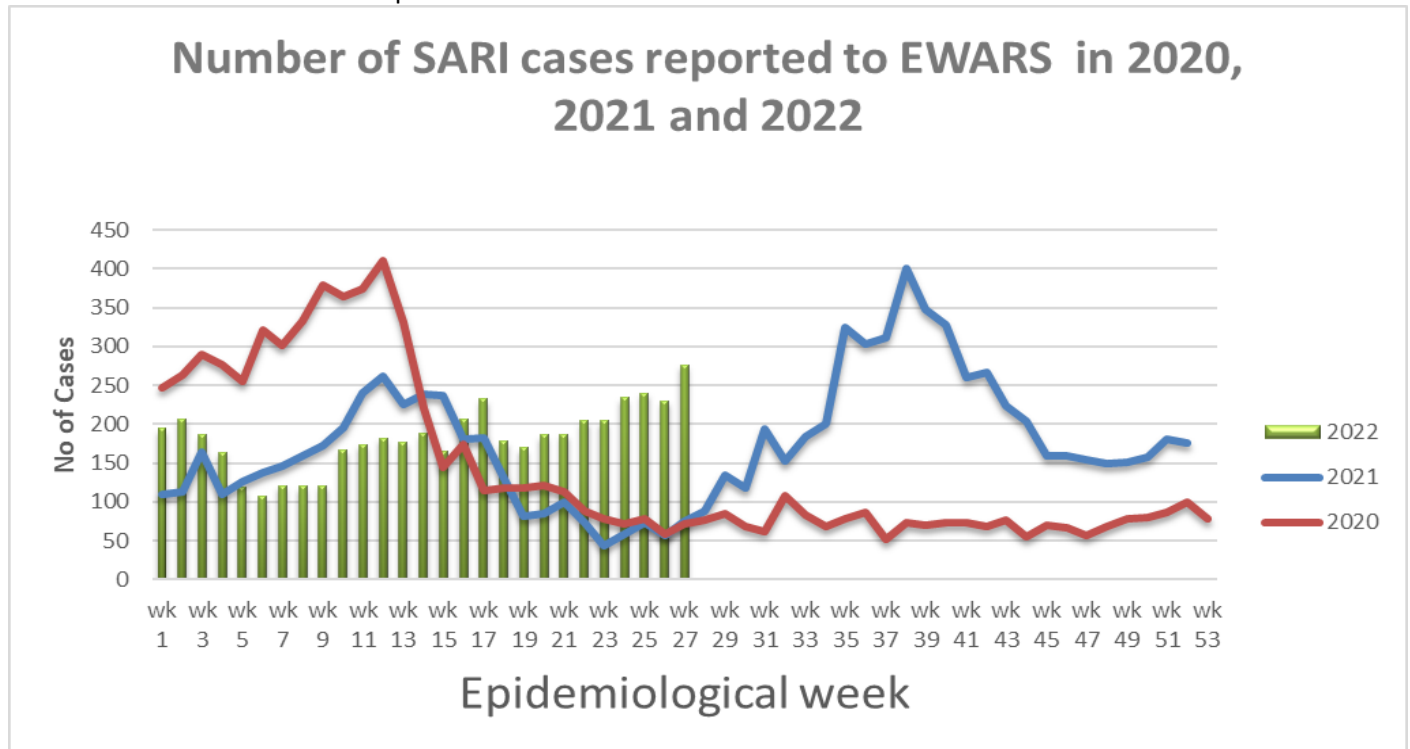
- 387 cases of AGE were reported this week. Most of these cases were reported from Kathmandu (33 cases), Lalitpur (30 cases), Kapilbastu (22 cases), Bhaktapur (21 cases), Parsa (20 cases), Bara (19 cases), Rupandehi (18 cases), Dang (15 cases), Ilam (12 cases), Sunsari (10 cases), Saptari, and Morang (9 cases from each districts), Gulmi (8 cases), Surkhet, Dailekh, Dolakha, Gorkha, Rukum West, and Jhapa (7 cases from each districts), Mahottari, Jumla, Lamjung, Bardiya, Khotang, and kavrepalanchok (6 cases from each districts), Palpa, Doti, Darchula, Siraha, and Sankhuwasabha (5 cases from each districts).
- 102 cases of AGE were reported this week in 2021.

Number of AGE cases reported to EWARS in 2020, 2021 and 2022



2. Severe Acute Respiratory Infection (SARI)

- 276 cases of SARI were reported this week. Most of these cases were reported from Rupandehi (19 cases), Jhapa (28 cases), Parsa (25 cases), Morang (17 cases), Surkhet (16 cases), Sunsari (11 cases), Nawalparasi West, and Baitadi (9 cases from each districts), Chitawan, Kapilbastu, Palpa, and Kathamndu (8 cases rom each districts), Bara, Darchula, and Ramechhap (7 cases from each districts), Lalitpur (6 cases), Rautahat, Taplejung, Dhankuta, and Kailali (5 cases from each districts).
- 78 cases of SARI were reported this week in 2021.



3. Malaria

- Three cases of malaria (Malaria-Falciparum) were reported this week; One each case was reported from Nawalparasi East, Arghakhanchi, and Rukum East districts.
- One case of malaria was reported this week in 2021.

4. Dengue

- 58 cases of dengue were reported this week. Most of these cases were reported from Sankhuwasabha (15 cases), Dhading (12 cases), Rupandehi (5 cases), Kathamndu (4 cases), Bhojpur (3 cases), Sindhuli, Jumla, and Arghakhanchi (2 cases from each districts),
- 19 cases of dengue were reported this week in 2021.

5. Kala-azar

- Four cases of kala-azar were reported this week; one each case was reported form Kailali, Bajura, Dhanusa, and Syangja districts.
- One cases of kala-azar were reported this week in 2021.

6. Cholera

- Two cases of Cholera were reported this week (i.e. week 27). Most of the case was reported from Lalitpur, and Bhaktapur (1 case from each districts).
- Zero case of Cholera was reported this week in 2021.

Other diseases

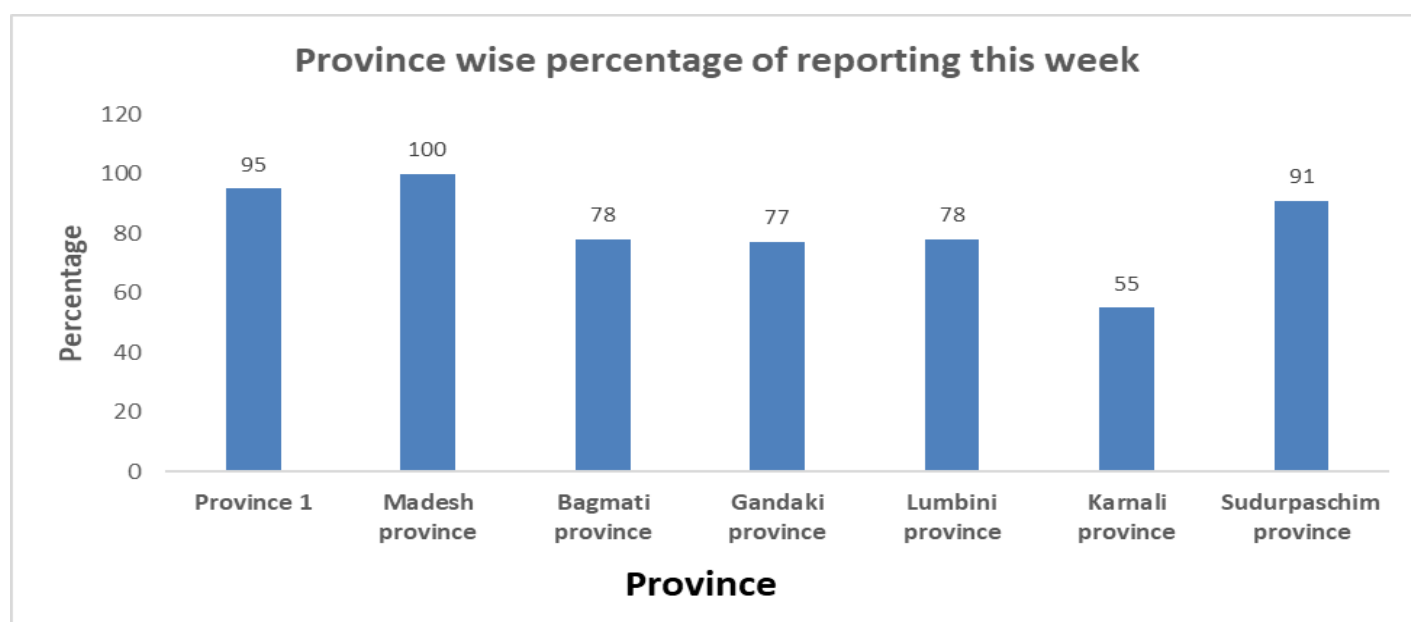
Scrub typhus

- 63 cases of scrub typhus were reported this week. Most of the cases were reported from Sankhuwasabha (7 cases), Rupandehi (6 cases), Palpa (5 cases), Okhaldhunga, and Sunsari (4 cases from each districts), Chitawan, Dhading, and Kathmandu (3 cases from each districts).
- 24 cases of scrub typhus were reported this week in 2021.

Table: Comparison with previous week by diseases, 2022

Disease	Week 27	Week 28
AGE	397	428
SARI	276	230
Malaria	3	2
Kala-azar	4	8
Dengue	58	25
Cholera	2	6

Province wise reporting status:



Acknowledgement: The Epidemiology and Disease Control Division (EDCD) highly acknowledges the contribution from all the sentinel sites, medical recorders, EWARS focal persons, rapid response team members and technical support from WHO and GIZ for preparation of this bulletin.

Note: This bulletin is also available at the EDCCD website (please click [here](#)). Other information can also be accessed at the website www.edcd.gov.np. Thank you.



Government of Nepal
Ministry of Health and Population
Department of Health Services
Epidemiology and Disease Control Division
Kathmandu, Nepal