

# Early Warning and Reporting System (EWARS)- Weekly Bulletin: Nepal

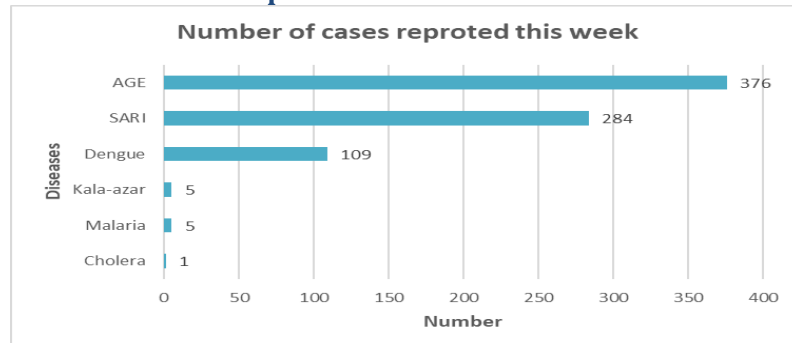
## 29<sup>th</sup> Epidemiological Week, 2022

### 31<sup>st</sup> July, 2022

#### Highlights

- 986596 cases of Coronavirus disease (COVID-19) have been confirmed in Nepal, of which 970062 cases have been recovered so far.
- Of the reported cases, Acute Gastro-Enteritis (AGE) is the leading cause of morbidity in week 29.
- The total cholera cases reported since date 16<sup>th</sup> June 2022 (2079/3/2) are 37 cases till date i.e. 30<sup>th</sup> July 2022 (2079/4/14) with no deaths.

#### Number of cases reported for each disease this week

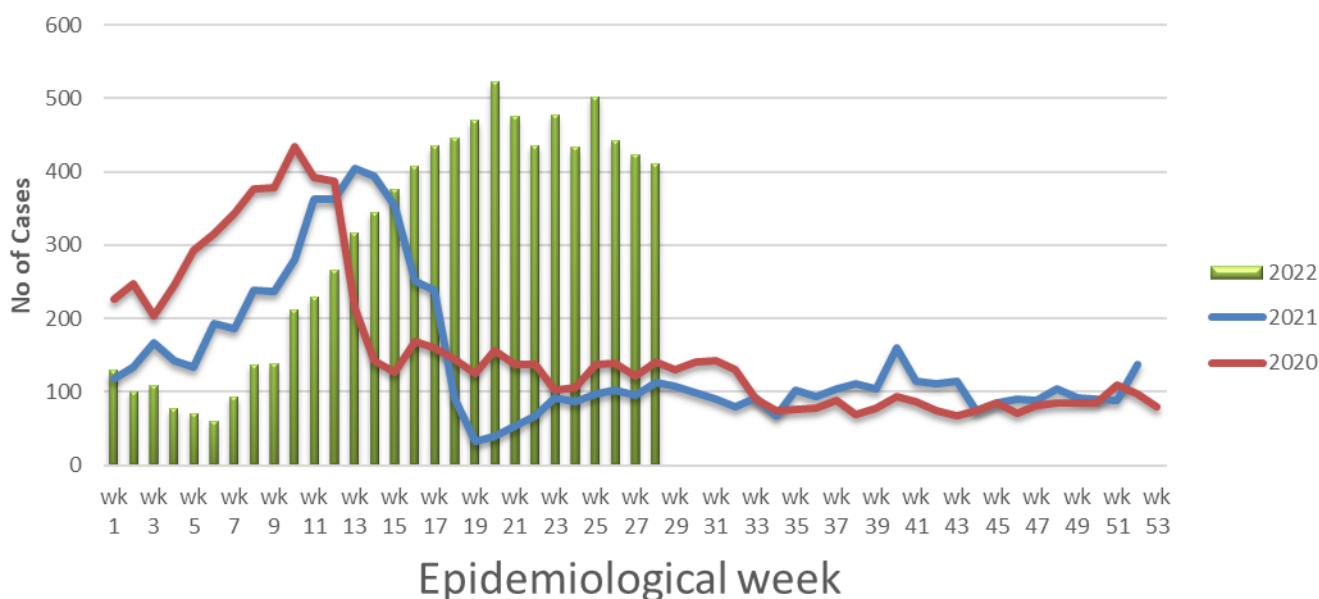


**Note:** This bulletin includes data since January 2021 till date, including comparison of the same period last year. Since, May 2019, 36 new sentinel sites (including public hospitals, private hospitals, and medical colleges) were added and were gradually oriented and started reporting, thus increasing the number of reporting sites. The current number of sentinel sites is 118.

#### 1. Acute Gastro-Enteritis (AGE)

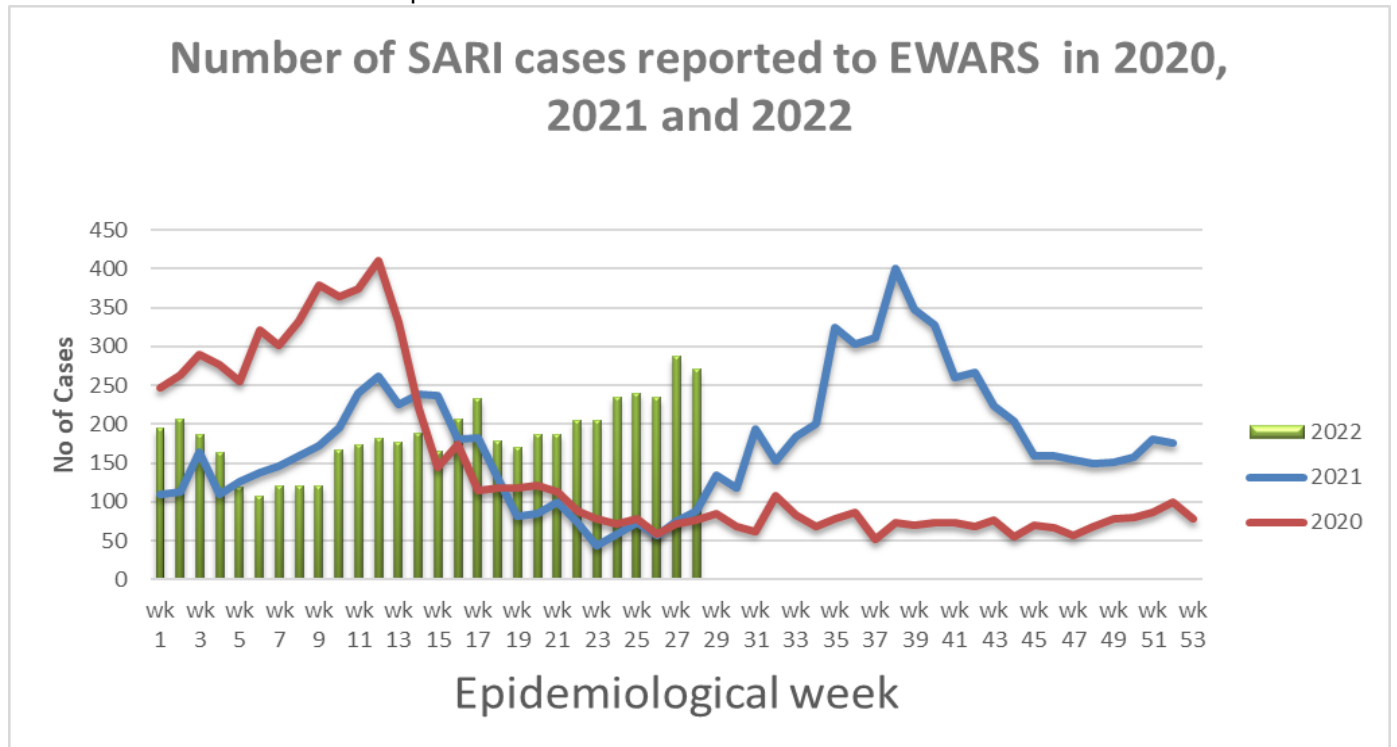
- 376 cases of AGE were reported this week. Most of these cases were reported from Kathmandu (53 cases), Lalitpur, Lamjung (17 cases from each districts), Bhaktapur (16 cases), Rupandehi, Dang (15 cases from each districts), Gorkha (12 cases), Parsa, Dolakha (11 cases from each districts), Kapilbastu, Sunsari, Jumla (10 cases from each districts), Bara (9 cases), Bajhang, Kaski, and Dhanusa (8 cases from each districts), Rukum West, Pyuthan (7 cases from each districts), Saptari, Surkhet, Syangja, Okhaldhunga (6 cases from each districts), Mahottari, Doti, Kailali, Nuwakot, Gulmi, Nawalparasi West, Chitawan (5 cases from each districts).
- 117 cases of AGE were reported this week in 2021.

#### Number of AGE cases reported to EWARS in 2020, 2021 and 2022



## 2. Severe Acute Respiratory Infection (SARI)

- 284 cases of SARI were reported this week. Most of these cases were reported from Jhapa (21 cases), Kathmandu, Surkhet (17 cases from each districts), Morang, Sunsari (16 cases from each districts), Lalitpur (15 cases), Rupandehi (12 cases), Parsa(11 cases), Kapilbastu (10 cases), Saptari, Kaski (9 cases from each districts), Bara (8 cases), Palpa (7 cases), Bajhang, Kavrepalanchok, Dhankuta (6 cases from each districts), Chitawan, Kailali, Pyuthan (5 cases fom each districts).
- 137 cases of SARI were reported this week in 2021.



## 3. Malaria

- Five cases of malaria (Malaria-Falciparum 3, and Malaria-Vivax 2) were reported this week. Most of the cases were reported from Kapilbastu (2 cases), and one each case from Banke, Palpa, and Rupandehi districts.
- One case of malaria was reported this week in 2021.

## 4. Dengue

- 109 cases of dengue were reported this week. Most of these cases were reported Rupandehi (39 case), Sindhuli (8 cases), Gulmi (6 cases), Kathmandu, Lalitpur, Kapilbastu (5 cases from each districts), Dhading (4 cases), Arghakhanchi, Ramechhap, Dang, Pyuthan, Lamjung (3 cases from each districts).
- Nine cases of dengue were reported this week in 2021.

## 5. Kala-azar

- Five cases of kala-azar were reported this week; one each case was reported form Baitadi, Bara, Doti, Kalikot, and Dailekh districts.
- Five cases of kala-azar were reported this week in 2021.

## 6. Cholera

- One cases of Cholera were reported this week (i.e. week 29); One case was reported from Kathmandu district.
- Zero case of Cholera was reported this week in 2021.

## Other diseases

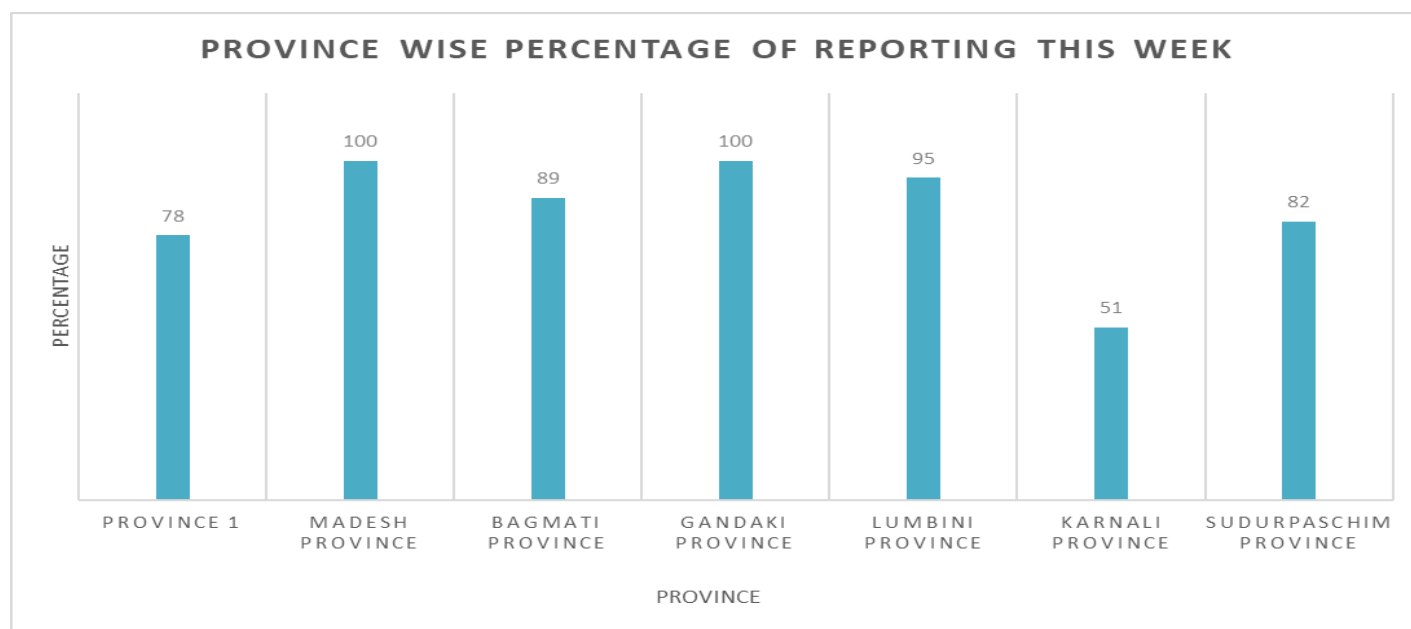
### Scrub typhus

- 60 cases of scrub typhus were reported this week. Most of the cases were reported Sankhuwasabha (6 cases), Dhading (5 cases), Baitadi, and Arghakhanchi (4 case from each district), Bhajpur, Sindhuli (3 cases from each districts), Kapilbastu, Nawalparasi east, Nawalparasi West, Darchula, Kathmandu, Chitawan ( 2 cases from each districts).
- 30 cases of scrub typhus were reported this week in 2021.

**Table: Comparison with previous week by diseases, 2022**

Disease	Week 29	Week 28
AGE	376	433
SARI	284	274
Malaria	5	5
Kala-azar	5	11
Dengue	109	64
Cholera	1	2

### Province wise reporting status:



**Acknowledgement:** The Epidemiology and Disease Control Division (EDCD) highly acknowledges the contribution from all the sentinel sites, medical recorders, EWARS focal persons, rapid response team members and technical support from WHO and GIZ for preparation of this bulletin.

**Note:** This bulletin is also available at the EDCCD website (please click [here](#)). Other information can also be accessed at the website [www.edcd.gov.np](http://www.edcd.gov.np). Thank you.



**Government of Nepal**  
**Ministry of Health and Population**  
**Department of Health Services**  
**Epidemiology and Disease Control Division**  
**Kathmandu, Nepal**