

Early Warning and Reporting System (EWARS)

Weekly Bulletin

(2nd Epidemiological Week)

20 January 2019



Government of Nepal
Ministry of Health and Population
Department of Health Services
Epidemiology and Disease Control Division
Kathmandu, Nepal
ewarsedcd@gmail.com

This bulletin includes the updates from the Early Warning and Reporting System (EWARS). It includes data since January 2019 till date, including comparison of same period during last year.

The Early Warning and Reporting System (EWARS)

Highlights

AGE: One death from AGE is reported this week from Imadole, Lalitpur.

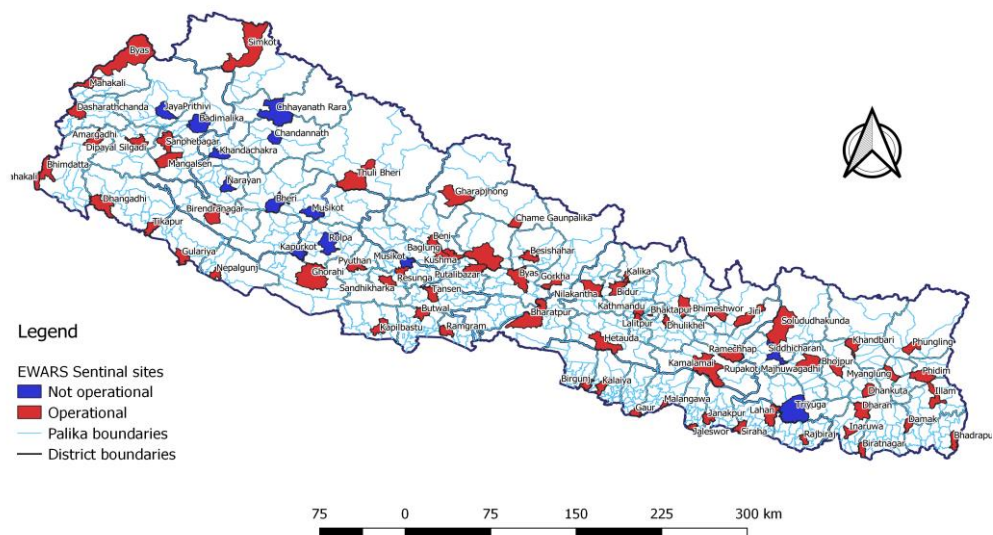
SARI: Three deaths from SARI are reported this week, one each from Dhanusha, Lalitpur and Kathmandu district.

Kala-azar: Five cases of Kala-azar are reported this week (one each from Bajura, Bardiya, Humla, Kalikot and Sindhuli).

The EWARS was established in 1997 to strengthen the flow of information on vector-borne and other outbreak prone infectious diseases from the district to Epidemiology and Disease Control Division (EDCD) and Vector-Borne Disease Research and Training Center (VBDRTC), Hetauda. Rapid Response Teams (RRTs) can be mobilized at short notice to facilitate prompt outbreak response at Central, Regional and District level. RRTs can also support local level health institutions for investigation and outbreak control activities.

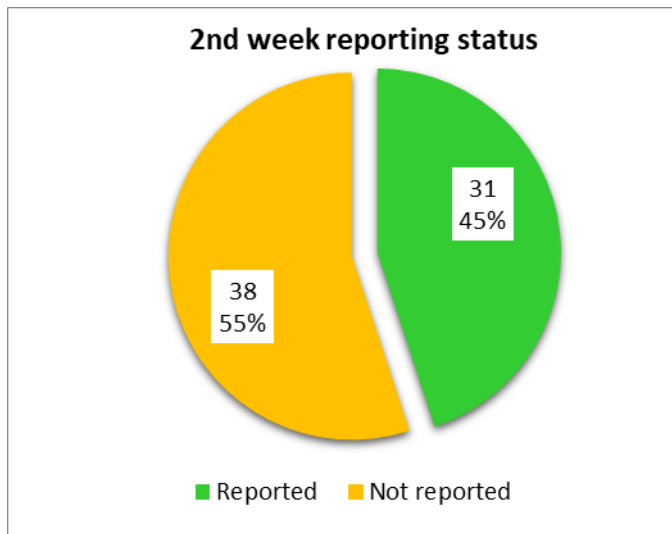
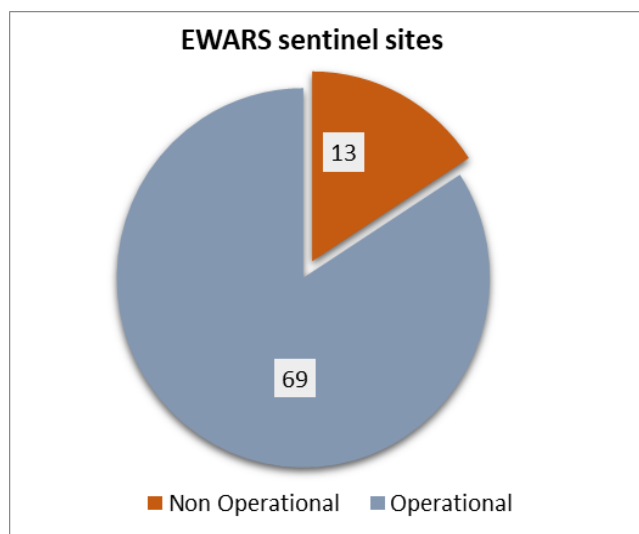
This information system is hospital-based and is currently operational in 69 hospitals (out of 82 sites) throughout Nepal (Figure 1). So far, the EWARS mainly focuses on the **weekly reporting** of number of cases and deaths (including "zero" reports) of six priority diseases/syndromes—Malaria, Kala-azar, Dengue, Acute Gastroenteritis (AGE), Cholera and Severe Acute Respiratory Infection (SARI), and other epidemic potential diseases/syndromes (like enteric fever). It equally focuses on **immediate reporting** (to be reported within 24 hours of diagnosis) of one confirmed case of Cholera, Kala-azar severe and complicated Malaria and one suspect/clinical case of Dengue as well as 5 or more cases of AGE and SARI from the same geographical locality in one-week period.

EWARS Sentinel Sites



Reporting Status

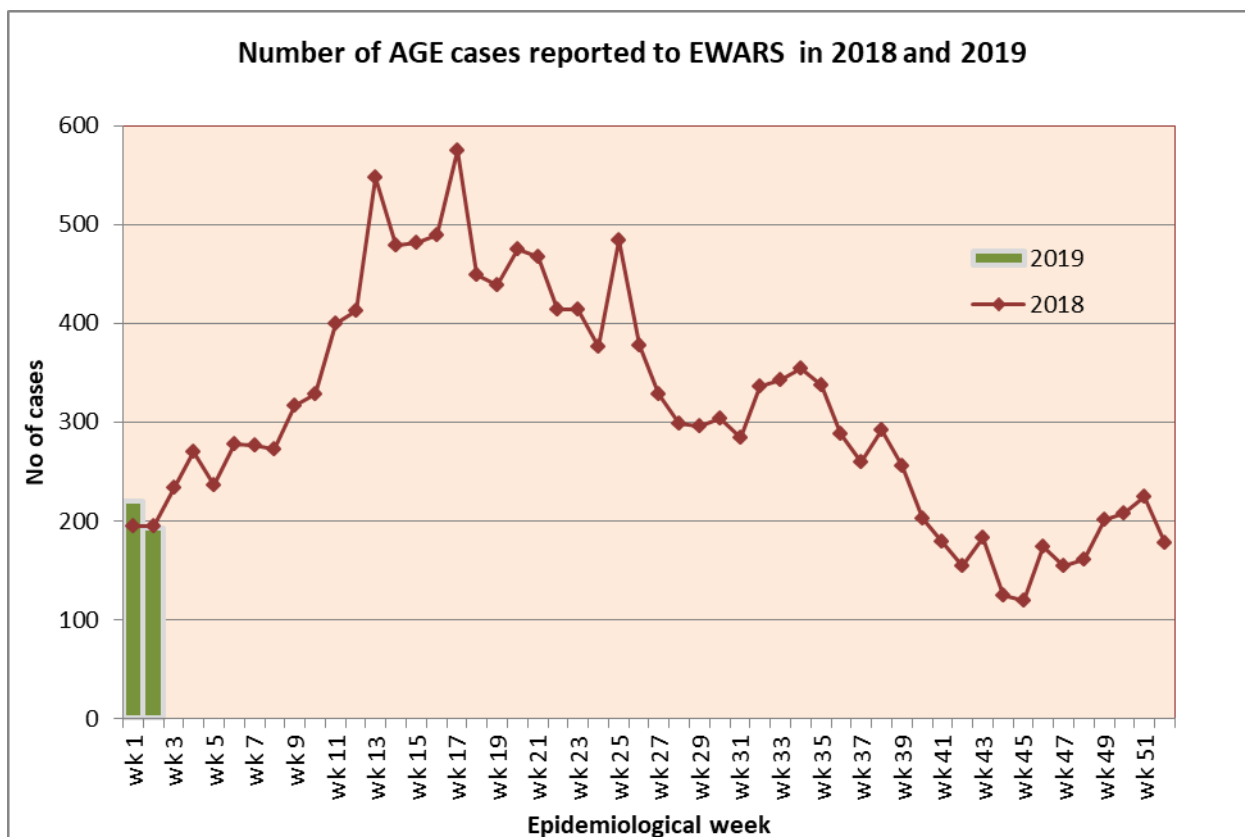
Out of 69 functional EWARS sentinel sites, report was received from 31 sentinel sites (45%) whereas 38 sentinel sites did not report in the 2nd epidemiological week of 2019. The reporting coverage has slightly decreased compared to the last week.



1.1 Acute Gastro-Enteritis and Cholera

193 cases of AGE are reported in the 2nd epidemiological week of 2019. The majority of these cases are from Saptari (23 cases), Achham (19 cases) and Dhanusha (16). 194 AGE cases were reported this week in 2018.

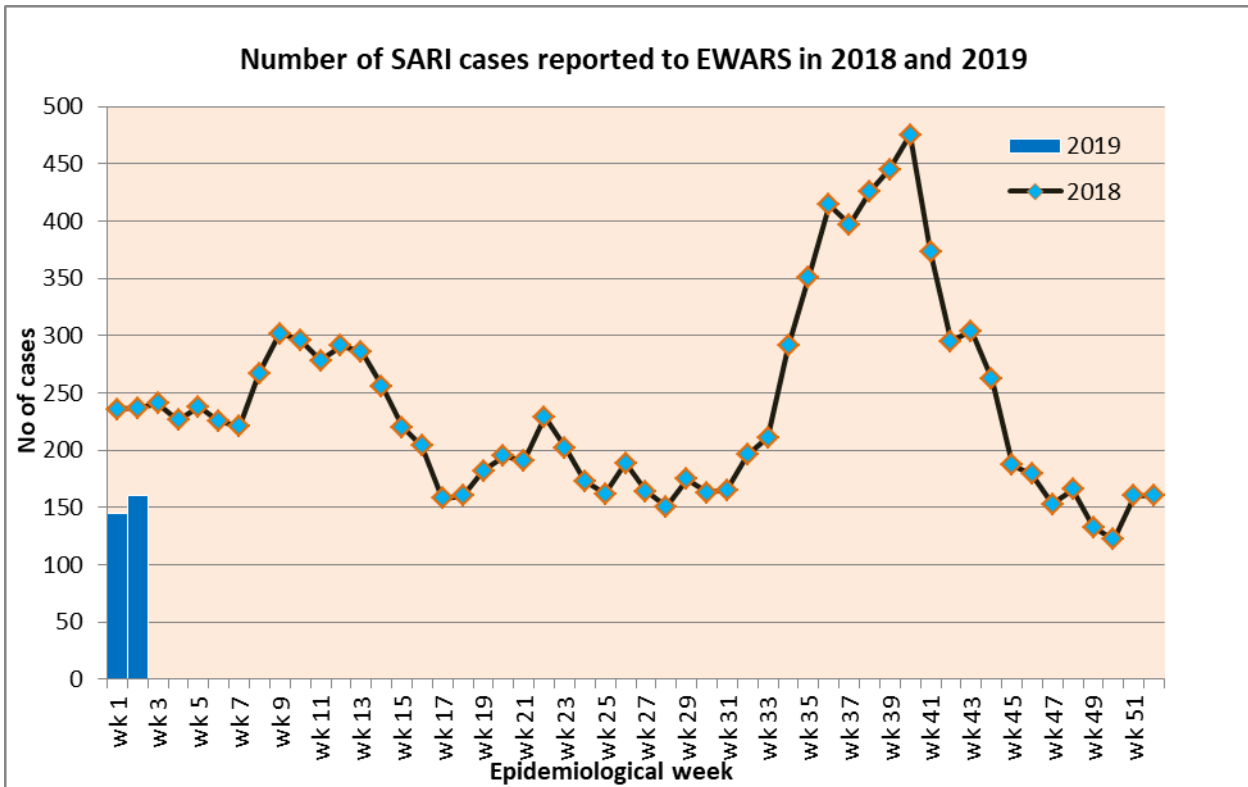
One death from AGE is reported this week from Imadole, Lalitpur.



1.2 Severe Acute Respiratory Infection (SARI)

161 cases of SARI are reported in the 2nd epidemiological week this year. The majority of these cases are from Lalitpur (19 cases), Morang (16 cases) and Sindhuli (15 cases). 237 cases of SARI were reported this week in 2018.

Three deaths from SARI are reported this week, one each from Dhanusha, Lalitpur and Kathmandu district.



1.3 Enteric Fever

Fifteen cases of Enteric fever are reported this week. The majority of the cases are from Lampung (2 cases), Dhading (2 cases), Kathmandu (2 cases) and Bara (2 cases). No death from Enteric fever is reported so far this year.

1.4 Malaria

One case of Malaria is reported this week from Sunsari. No case of Malaria was reported this week in 2018.

1.5 Dengue

No case of Dengue is reported this week.

1.6 Kala-azar

Five cases of Kala-azar are reported this week (one each from Bajura, Bardiya, Humla, Kalikot and Sindhuli).

1.7 Scrub typhus

Three cases of Scrub typhus are reported this week, one each from Arghakhanchi, Dhading and Kathmandu).

Timeliness and completeness of reporting from sentinel sites:

Code	Sentinel Sites	Timeliness (This Week)	Completeness (%)	Site Code	Sentinel Sites	Timeliness (This Week)	Completeness (%)
101	Mechi ZH, Jhapa	No reporting	50	136	DH, Illam	No reporting	50
102	Koshi ZH, Morang	On Time	100	137	Dhulikhel H., Kavre	No reporting	0
103	DH, Sunsari	No reporting	0	138	DH, Solukhumbu	No reporting	0
104	BPKIHS, Dharan	On Time	100	139	DH, Dolpa	No reporting	0
105	DH, Dhankuta	On Time	100	140	DH, Humla	No reporting	0
106	SZH, Saptari	On Time	100	201	L. Comm DH, Lamjung	On Time	100
107	RKUP Lahan, Siraha	On Time	100	202	DH, Dhading	No reporting	50
108	DH, Siraha	No reporting	50	203	DH, Ramechhap	On Time	100
109	JZH, Dhanusha	On Time	100	204	Bhaktapur Hospital	On Time	100
110	DH, Rautahat	No reporting	0	205	Patan Hospital, Lalitpur	On Time	100
111	DH, Bara	On Time	100	206	DH, Gorkha	No reporting	0
112	NSRH, Parsa	No reporting	0	207	DH Trishuli, Nuwakot	No reporting	0
113	DH, Makwanpur	No reporting	50	208	Charikot PHCC, Dolakha	On Time	100
114	Bharatpur Hospital, Chitwan	No reporting	0	209	Jiri H, Dolakha	On Time	100
115	Kanti CH, Kathmandu	On Time	100	210	DH, Syangja	On Time	100
116	STIDH, Kathmandu	No reporting	50	211	DH, Tanahun	No reporting	0
117	UMH, Palpa	On Time	100	212	PAHS/WRH, Kaski	No reporting	50
118	PCH, Nawalparasi	No reporting	0	213	DH, Myagdi	On Time	100
119	PBH, Kapilbastu	No reporting	50	214	DH, Gulmi	On Time	100
120	LPH, Rupandehi	No reporting	0	215	DZH, Baglung	On Time	100
121	RSRH Dang	On Time	100	216	DH, Parbat	No reporting	0
122	MWRH, Surkhet	On Time	100	217	DH, Arghakhanchi	On Time	100
123	BZH, Banke	No reporting	50	218	DH, Manang	No reporting	0
124	SZH, Kailali	On Time	100	219	DH, Mustang	No reporting	0
125	MZH, Kanchanpur	On Time	100	220	DH, Pyuthan	No reporting	0
126	DH, Doti	No reporting	50	229	DH, Achham	No reporting	0
127	DH, Bardiya	No reporting	0	230	DH, Baitadi	On Time	50
128	DH, Mahottari	No reporting	0	231	DH, Darchula	No reporting	0
129	DH, Dadeldhura	No reporting		234	DH, Taplejung	No reporting	0
130	DH, Rasuwa	On Time	100	235	DH, Panchthar	No reporting	0
131	DH, Sankhuwasabha	No reporting	0	236	DH, Terhathum	No reporting	0
132	AMDA Hosp., Jhapa	On Time	100	237	DH, Bhojpur	On Time	100
133	DH, Chautara	No reporting	50	238	DH, Khotang	No reporting	0
134	DH, Sarlahi	On Time	100	301	Bayalpata Hosp., Achham	On Time	100
135	DH, Sindhuli	On Time	100	302	Tikapur Hospital, Kailali	No reporting	0
						Excellent (>80)	
						Satisfactory (50-79)	
						Bad(<50)	

Acknowledgement The Epidemiology and Disease Control Division highly acknowledges the contribution from all the medical recorders, EWARS focal persons, rapid response team members and technical support from WHO for preparation of this bulletin.

Note: EWARS reporting form (in MS Excel format) is available at EDCD's official website www.edcd.gov.np. This bulletin is also available at the website.