

Early Warning and Reporting System (EWARS)- Weekly Bulletin: Nepal

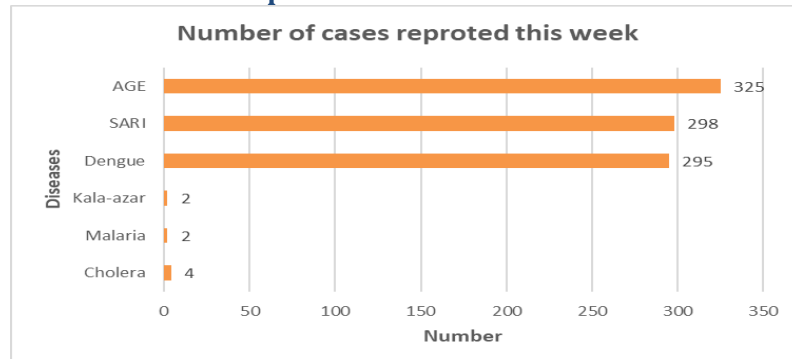
32nd Epidemiological Week, 2022

21st August, 2022

Highlights

- 995241 cases of Coronavirus disease (COVID-19) have been confirmed in Nepal, of which 978901 cases have been recovered so far.
- Of the reported cases, Acute Gastro-Enteritis (AGE) is the leading cause of morbidity in week 32.
- The total cholera cases reported since date 16th June 2022 (2079/3/2) are 62 cases till date i.e. 20th August 2022 (2079/4/4) with no deaths.

Number of cases reported for each disease this week

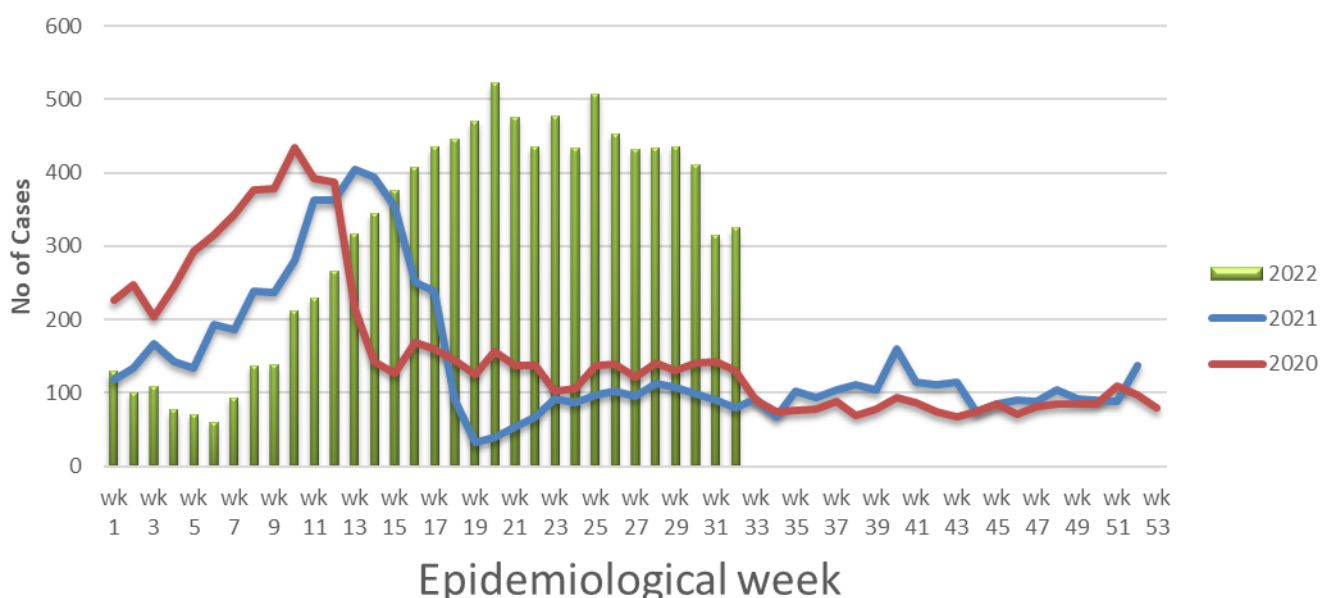


Note: This bulletin includes data since January 2021 till date, including comparison of the same period last year. Since, May 2019, 36 new sentinel sites (including public hospitals, private hospitals, and medical colleges) were added and were gradually oriented and started reporting, thus increasing the number of reporting sites. The current number of sentinel sites is 118.

1. Acute Gastro-Enteritis (AGE)

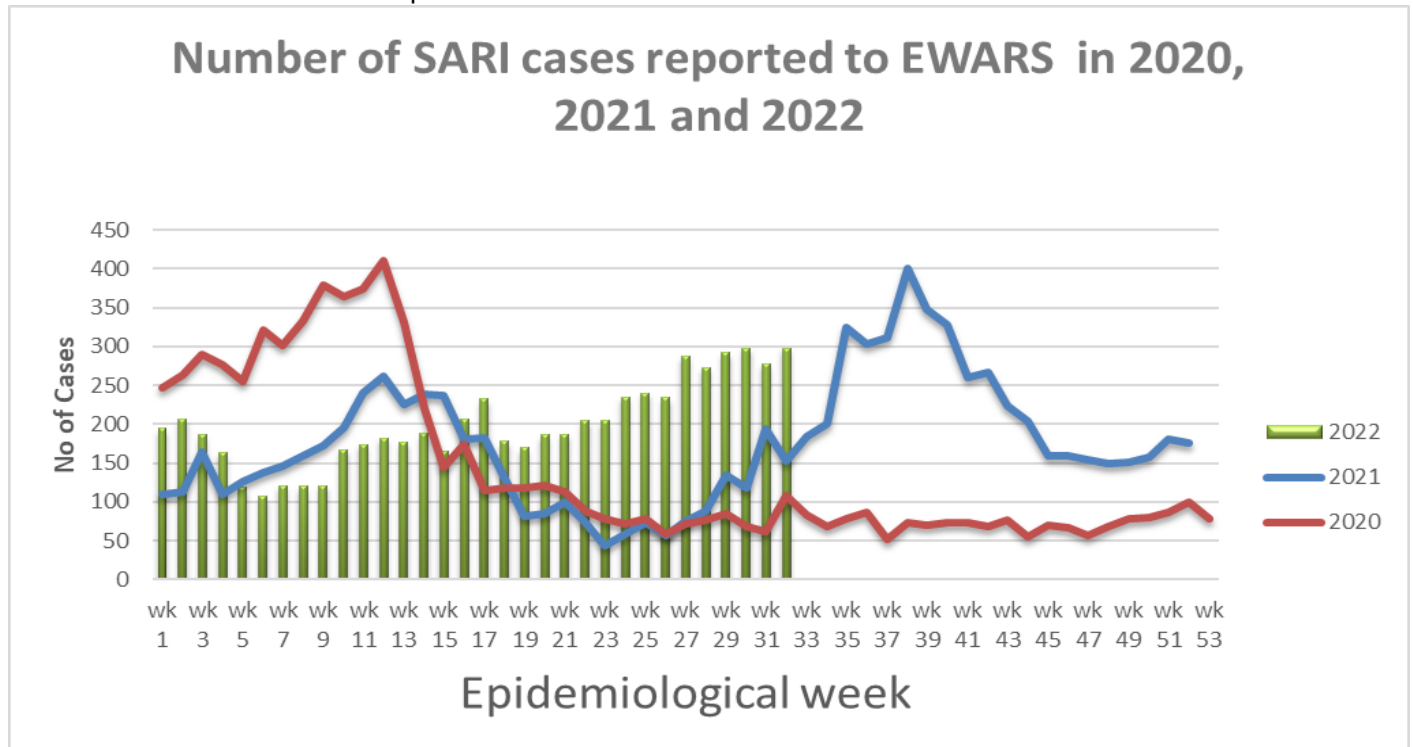
- 325 cases of AGE were reported this week. Most of these cases were reported from Kathmandu (37 Cases), Parsa (22 cases), Dang (18 cases), Kapilbastu (17 cases), Lalitpur (14 cases), Bara, Sunsari, and Bhaktapur (13 cases from each districts), Rukum West (12 cases), Ilam (10 cases), Mahottari, and Saptra (7 cases from each districts), Rupanedhi, Bardiya, Jumla, Bhajhang, Lamjung, and Morang (6 cases from each districts), Arghakhanchi, Dhanusa, Kaski, Siraha, Surkhet, Gulmi, and Makwanpur (5 cases from each districts).
- 86 cases of AGE were reported this week in 2021.

Number of AGE cases reported to EWARS in 2020, 2021 and 2022



2. Severe Acute Respiratory Infection (SARI)

- 298 cases of SARI were reported this week. Most of these cases were reported from Morang (26 cases), Rupandehi (23 cases), Kathmandu (19 cases), Jhapa (18 cases), Surkhet (17 cases), Rukum West, Sunsari and Saptari (12 cases from each districts), Kapilbastu, and Parsa (9 cases from each districts), Lalitpur (8 cases), Palpa (7 cases), Salyan, Sindhupalchok, Kailali, and Kaski (6 cases from each districts), Pyuthan, Nawalparasi West, and Doti (5 cases from each districts).
- 166 cases of SARI were reported this week in 2021.



3. Malaria

- Two cases of malaria (Malaria-Falciparum 1, Malaria-Vivax 1) were reported this week; one each case was reported from Kanchanpur, and Nawalparasi West districts.
- Four case of malaria were reported this week in 2021.

4. Dengue

- 295 cases of dengue were reported this week. Most of these cases were reported from Lalitpur (81 cases), Rupandehi (60 cases), Kathmandu (37 cases), Nawalparasi West, and Bhaktapur (8 cases form each districts), Dhading, Gulmi, and Kapilbastu (7 cases form each districts), Arghakhanchi (6 cases), Terhathum, Sindhuli, and Makwanpur (5 cases from each districts).
- 10 cases of dengue were reported this week in 2021.

5. Kala-azar

- Two cases of kala-azar were reported this week; one each case was reported from Achham, Sankhuwasabha districts.
- Eight cases of kala-azar were reported this week in 2021.

6. Cholera

- Four cases of Cholera were reported this week (i.e. week 32); all four case were reported form Kathmandu district.
- Zero case of Cholera was reported this week in 2021.

Other diseases

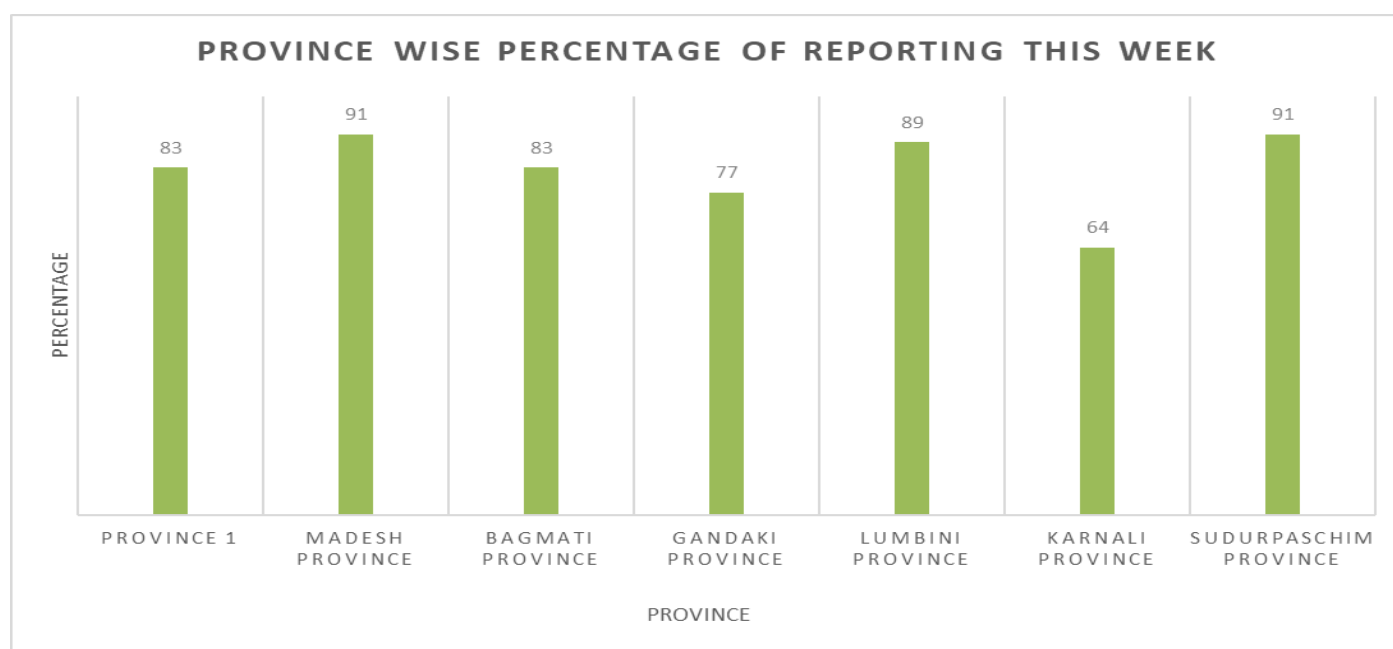
Scrub typhus

- 103 cases of scrub typhus were reported this week. Most of the cases were reported from Rupandehi (10 cases), Kavrepalnchok (9 cases), Baitadi, and Bhojpur (7 cases from each districts), Sindhuli (6 cases), Sankhuwasabha (5 cases), Kathmandu, Bardiya, Gulmi, and Arghakhanchi (4 cases from each districts).
- 79 cases of scrub typhus were reported this week in 2021.

Table: Comparison with previous week by diseases, 2022

Disease	Week 32	Week 31
AGE	325	315
SARI	298	278
Malaria	2	1
Kala-azar	2	5
Dengue	295	151
Cholera	4	2

Province wise reporting status:



Acknowledgement: The Epidemiology and Disease Control Division (EDCD) highly acknowledges the contribution from all the sentinel sites, medical recorders, EWARS focal persons, rapid response team members and technical support from WHO and GIZ for preparation of this bulletin.

Note: This bulletin is also available at the EDCCD website (please click [here](#)). Other information can also be accessed at the website www.edcd.gov.np. Thank you.



Government of Nepal
Ministry of Health and Population
Department of Health Services
Epidemiology and Disease Control Division
Kathmandu, Nepal