

Early Warning and Reporting System (EWARS)

Weekly Bulletin

(34th Epidemiological Week)

2 September, 2018



Government of Nepal
Ministry of Health and Population
Department of Health Services
Epidemiology and Disease Control Division
Kathmandu, Nepal
ewarsedcd@gmail.com

This bulletin includes the updates from the Early Warning Reporting System (EWARS). It includes data since January 2018 till date, including comparison of same period during last year.

The Early Warning and Reporting System (EWARS)

Highlights

Kala-azar: Two cases of Kala azar are reported this week, one each from Janakpur Zonal Hospital, Dhanusha and Mid-Western Regional Hospital, Surkhet and the cases are from Mahottari and Dailekh district respectively.

Malaria: One case of Malaria (*Plasmodium Vivax*) is reported this week from Prithvi Bir Hospital, Kapilbastu and the case is from Kapilbastu Municipality of Kapilbastu district.

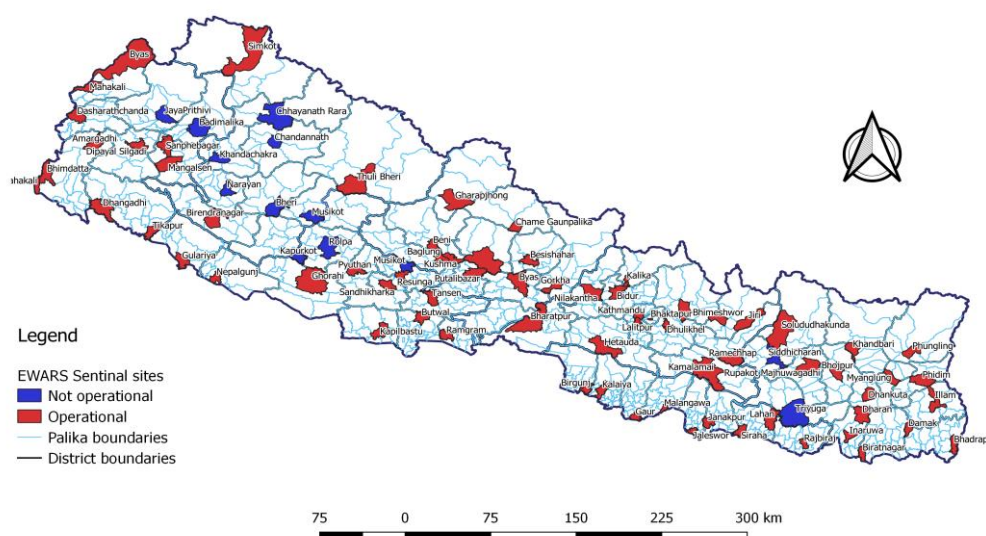
Dengue: Seven cases of Dengue are reported this week, three each from Bharatpur Hospital, Chitwan and Sukraraj Tropical and Infectious Disease Hospital, Kathmandu and one from Mechi Zonal Hospital, Jhapa. The cases are from Chitwan, Makwanpur, Baglung, Bardiya, Kathmandu and Jhapa district.

Scrub Typhus: Thirty five cases of Scrub Typhus are reported this week. The cases are from Palpa, Syangja, Dhading, Gorkha, Gulmi, Lamjung, Nuwakot, Sindhuli, Sindhupalchok, Parbat, Rupandehi, Surkhet, Arghakhanchi and Lamjung district.

The EWARS was established in 1997 to strengthen the flow of information on vector-borne and other outbreak prone infectious diseases from the district to Epidemiology and Disease Control Division (EDCD) and Vector-Borne Disease Research and Training Center (VBDRTC), Hetauda. Rapid Response Teams (RRTs) can be mobilized at short notice to facilitate prompt outbreak response at Central, Regional and District level. RRTs can also support local level health institutions for investigation and outbreak control activities.

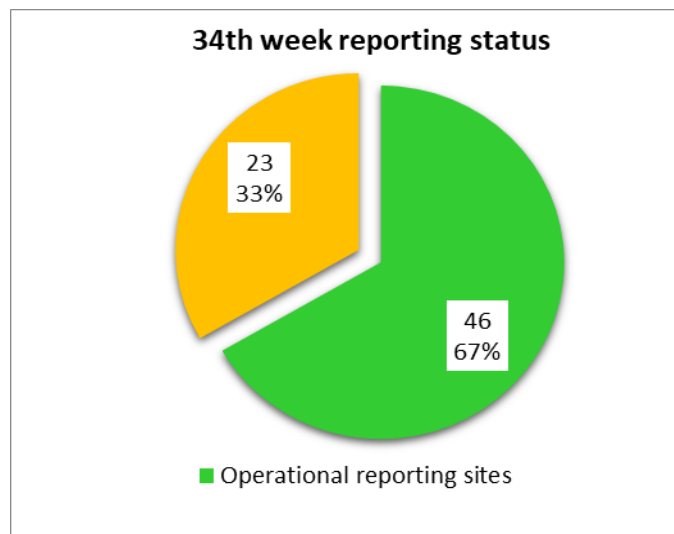
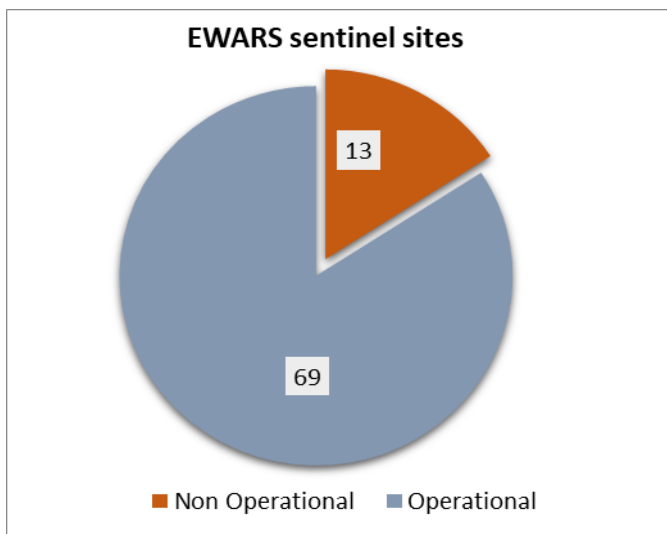
This information system is hospital-based and is currently operational in 68 hospitals (out of 82 sites) throughout Nepal (Figure 1). So far, the EWARS mainly focuses on the **weekly reporting** of number of cases and deaths (including "zero" reports) of six priority diseases/syndromes—Malaria, Kala-azar, Dengue, Acute Gastroenteritis (AGE), Cholera and Severe Acute Respiratory Infection (SARI), and other epidemic potential diseases/syndromes (like enteric fever). It equally focuses on **immediate reporting** (to be reported within 24 hours of diagnosis) of one confirmed case of Cholera, Kala-azar severe and complicated Malaria and one suspect/clinical case of Dengue as well as 5 or more cases of AGE and SARI from the same geographical locality in one week period.

EWARS Sentinel Sites



Reporting Status

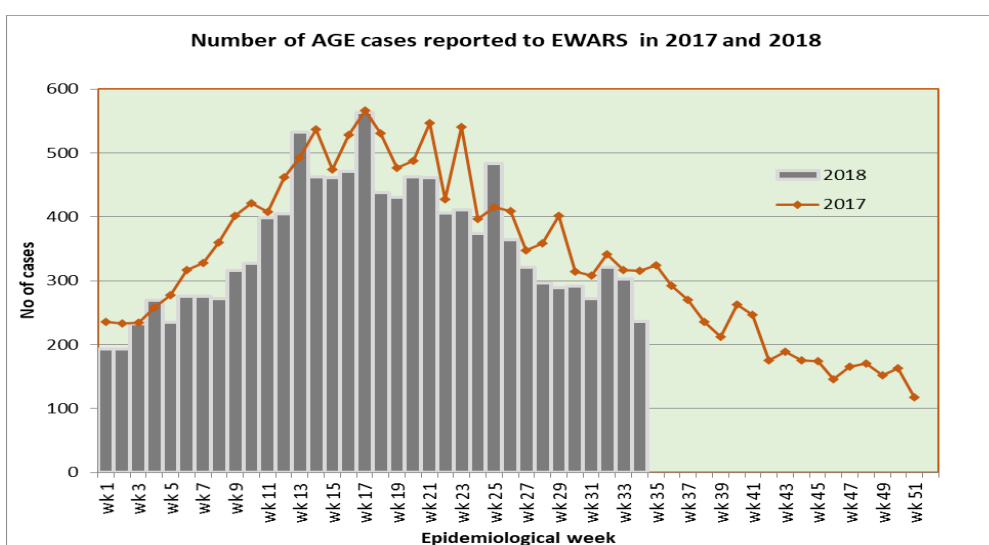
Out of 69 functional EWARS sentinel sites, report was received from 46 sentinel sites (67 percent) whereas 23 sentinel sites did not report in 34th Epidemiological week of 2018. The reporting coverage is same as compared to previous week.



1.1 Acute Gastro-Enteritis and Cholera

236 cases of AGE are reported in 34th epidemiological week of 2018. Among 236 cases, the majority of cases are from Saptari (36 cases), Dolakha (17 cases), Kapilbastu (15 cases), Dhanusha (14 cases), Kanchanpur (14 cases), Achham (13 cases), Kailali (10 cases), Surkhet (10 cases), Dhanusha (8 cases) and Bardiya (7 cases) district. The number of AGE cases reported in 34th week this year did not exceed the number of AGE cases reported in the same week last year (315 cases).

No death from AGE is reported this week. Thirteen deaths from AGE are reported so far this year. Twenty deaths from AGE were reported in 2017.

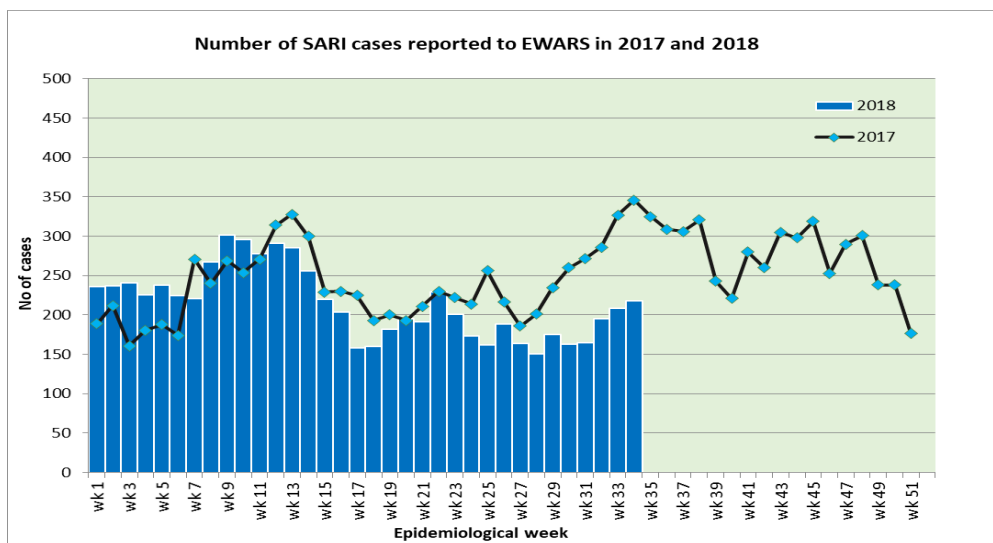


Cholera: A total of 3 cases of Cholera have been reported this year. The samples are confirmed positive by National Public Health Laboratory and the cases are from Nuwakot, Kathmandu and Lalitpur district.

1.2 Severe Acute Respiratory Infection (SARI)

218 cases of SARI are reported in 34th epidemiological week of 2018. The cases of SARI reported this week did not exceed the number reported in the same week last year (346 cases). Among 218 reported cases, the majority of cases are from Sindhuli (25 cases), Jhapa (22 cases), Morang (22 cases), Kailali (15 cases), Palpa (9 cases), Kathmandu (9 cases), Rupandehi (8 cases), Kanchanpur (7 cases) and Ilam (7 cases) district.

No death from SARI is reported this week. Twenty nine deaths from SARI are reported so far this year. Eighty two deaths from SARI were reported in 2017.



1.3 Enteric Fever

86 cases of Enteric fever are reported this week including 11 from Myagdi, 11 from Rolpa, 7 from Siraha, 7 from Gulmi, 5 from Kavre and 5 from Ilam district. No death from Enteric fever is reported so far this year. Three deaths from Enteric Fever were reported in 2017.

1.4 Malaria

One case of Malaria (*Plasmodium Vivax*) is reported this week from Prithvi Bir Hospital, Kapilbastu and the case is from Kapilbastu Municipality of Kapilbastu district.

1.5 Dengue

Seven cases of Dengue are reported this week, three each from Bharatpur Hospital, Chitwan and Sukraraj Tropical and Infectious Disease Hospital, Kathmandu and one from Mechi Zonal Hospital, Jhapa. The cases are from Chitwan, Makwanpur, Baglung, Bardiya, Kathmandu and Jhapa district.

Fifty seven cases of Dengue including two death are reported so far this year. 1201 cases of dengue are reported through EWARS in 2017.

1.6 Kala-azar

Two cases of Kala azar are reported this week, one each from Janakpur Zonal Hospital, Dhanusha and Mid-Western Regional Hospital, Surkhet and the cases are from Mahottari and Dailekh district respectively.

One Hundred seventeen cases of Kala azar including two deaths are reported so far this year. Two hundred twelve cases of Kala-azar were reported through EWARS in 2017.

1.7 Scrub Typhus

Thirty five cases of Scrub Typhus are reported this week, 14 from Kanti Children Hospital, Kathmandu, 12 from United Mission Hospital, Palpa, 6 from Sukraraj Tropical and Infectious Disease Hospital, Teku, two from Bharatpur Hospital, Chitwan and One from Lumbini Zonal Hospital, Rupandehi. The cases are from Palpa, Syangja, Dhading, Gorkha, Gulmi, Lamjung, Nuwakot, Sindhuli, Sindhupalchok, Parbat, Lamjung, Rupandehi, Surkhet and Arghakhanchi district.

Two Hundred twenty nine cases of scrub typhus including one death are reported so far this year. 451 cases of Scrub Typhus were reported through EWARS in 2017.

Timeliness & completeness of reporting from sentinel sites:

| Code | Sentinel Sites | Timeliness (This Week) | Completeness (%) | Site Code | Sentinel Sites | Timeliness (This Week) | Completeness (%) |
|------|-----------------------------|------------------------|------------------|-----------|--------------------------|------------------------|------------------|
| 101 | Mechi ZH, Jhapa | On Time | 100 | 136 | DH, Illam | On Time | 100 |
| 102 | Koshi ZH, Morang | On Time | 100 | 137 | Dhulikhel H., Kavre | On Time | 100 |
| 103 | DH, Sunsari | On Time | 100 | 138 | DH, Solukhumbu | On Time | 96 |
| 104 | BPKIHS, Dharan | No Reporting | 97 | 139 | DH, Dolpa | No Reporting | 0 |
| 105 | DH, Dhankuta | On Time | 100 | 140 | DH, Humla | No Reporting | 0 |
| 106 | SZH, Saptari | On Time | 57 | 201 | L. Comm DH, Lamjung | On Time | 100 |
| 107 | RKUP Lahan, Siraha | On Time | 100 | 202 | DH, Dhading | On Time | 85 |
| 108 | DH, Siraha | No Reporting | 73 | 203 | DH, Ramechhap | On Time | 100 |
| 109 | JZH, Dhanusha | On Time | 100 | 204 | Bhaktapur Hospital | No Reporting | 10 |
| 110 | DH, Rautahat | No Reporting | 10 | 205 | Patan Hospital, Lalitpur | On Time | 100 |
| 111 | DH, Bara | No Reporting | 90 | 206 | DH, Gorkha | No Reporting | 20 |
| 112 | NSRH, Parsa | No Reporting | 90 | 207 | DH Trishuli, Nuwakot | No Reporting | 10 |
| 113 | DH, Makwanpur | No Reporting | 97 | 208 | Charikot PHCC, Dolakha | On Time | 96 |
| 114 | Bharatpur Hospital, Chitwan | On Time | 100 | 209 | Jiri H, Dolakha | On Time | 100 |
| 115 | Kanti CH, Kathmandu | On Time | 100 | 210 | DH, Syangja | On Time | 88 |
| 116 | STIDH, Kathmandu | On Time | 100 | 211 | DH, Tanahun | No Reporting | 10 |
| 117 | UMH, Palpa | On Time | 100 | 212 | PAHS/WRH, Kaski | On Time | 100 |
| 118 | PCH, Nawalparasi | No Reporting | 97 | 213 | DH, Myagdi | On Time | 70 |
| 119 | PBH, Kapilbastu | On Time | 100 | 214 | DH, Gulmi | On Time | 79 |
| 120 | LZH, Rupandehi | On Time | 100 | 215 | DZH, Baglung | On Time | 100 |
| 121 | RSRH Dang | On Time | 100 | 216 | DH, Parbat | On Time | 60 |
| 122 | MWRH, Surkhet | On Time | 100 | 217 | DH, Arghakhanchi | On Time | 30 |
| 123 | BZH, Banke | No Reporting | 64 | 218 | DH, Manang | On Time | 96 |
| 124 | SZH, Kailali | On Time | 74 | 219 | DH, Mustang | On Time | 72 |
| 125 | MZH, Kanchanpur | On Time | 100 | 220 | DH, Pyuthan | No Reporting | 80 |
| 126 | DH, Doti | No Reporting | 90 | 229 | DH, Achham | On Time | 100 |
| 127 | DH, Bardiya | On Time | 100 | 230 | DH, Baitadi | No Reporting | 78 |

| | | | | | | | |
|-----|-------------------|--------------|-----|-----|---------------------------|-----------------------------|-----|
| 128 | DH, Mahottari | No Reporting | 10 | 231 | DH, Darchula | On Time | 60 |
| 129 | DH, Dadeldhura | No Reporting | 0 | 234 | DH, Taplejung | No Reporting | 28 |
| 130 | DH, Rasuwa | No Reporting | 82 | 235 | DH, Panchthar | No Reporting | 70 |
| 131 | DH, Sankhuwasabha | On Time | 45 | 236 | DH, Terhathum | No Reporting | 80 |
| 132 | AMDA Hosp., Jhapa | On Time | 100 | 237 | DH, Bhojpur | On Time | 100 |
| 133 | DH, Chautara | On Time | 100 | 238 | DH, Khotang | No Reporting | 28 |
| 134 | DH, Sarlahi | On Time | 100 | 301 | Bayalpata Hosp., Achham | On Time | 100 |
| 135 | DH, Sindhuli | On Time | 100 | 302 | Tikapur Hospital, Kailali | On Time | 65 |
| | | | | | | | |
| | | | | | | Excellent (>80) | |
| | | | | | | Satisfactory (50-79) | |
| | | | | | | Bad(<50) | |

Acknowledgement

The Epidemiology and Disease Control Division highly acknowledges the contribution from all the medical recorders, EWARS focal persons, rapid response team members and support from WHO for preparation of this bulletin.

Note: EWARS reporting form (in MS Excel format) is available at EDCD's official website www.edcd.gov.np. This bulletin is also available at the website.