

Early Warning and Reporting System (EWARS)- Weekly Bulletin: Nepal

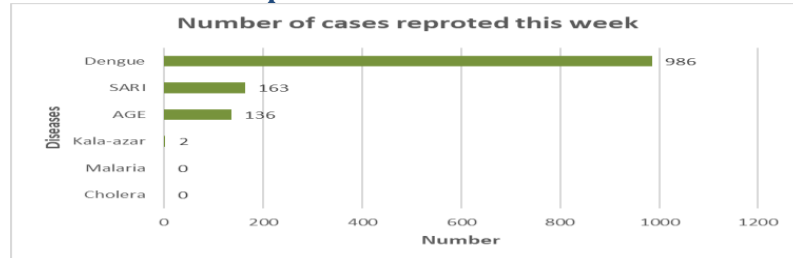
43rd Epidemiological Week, 2022

6th November, 2022

Highlights

- 1000734 cases of Coronavirus disease (COVID-19) have been confirmed in Nepal, of which 988145 cases have been recovered so far.
- Of the reported cases, Dengue is the leading cause of morbidity in week 43.

Number of cases reported for each disease this week

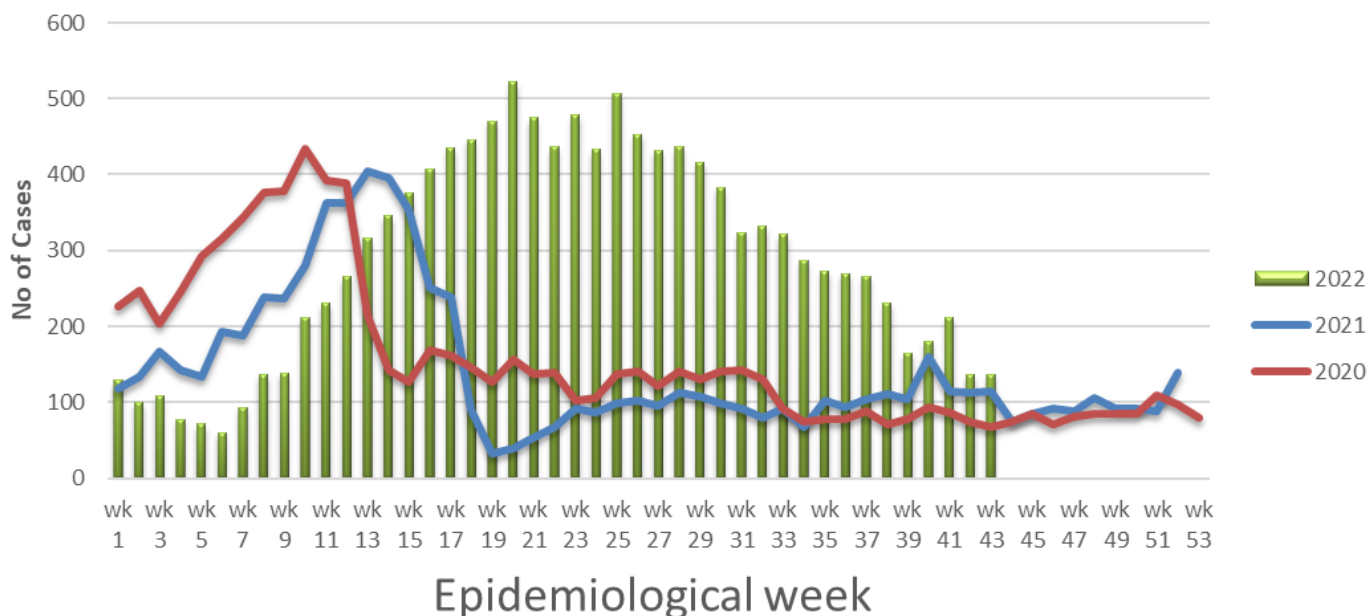


Note: This bulletin includes data since January 2021 till date, including comparison of the same period last two year. Since, May 2019, 36 new sentinel sites (including public hospitals, private hospitals, and medical colleges) were added and were gradually oriented and started reporting, thus increasing the number of reporting sites. The current number of sentinel sites is 118.

1. Acute Gastro-Enteritis (AGE)

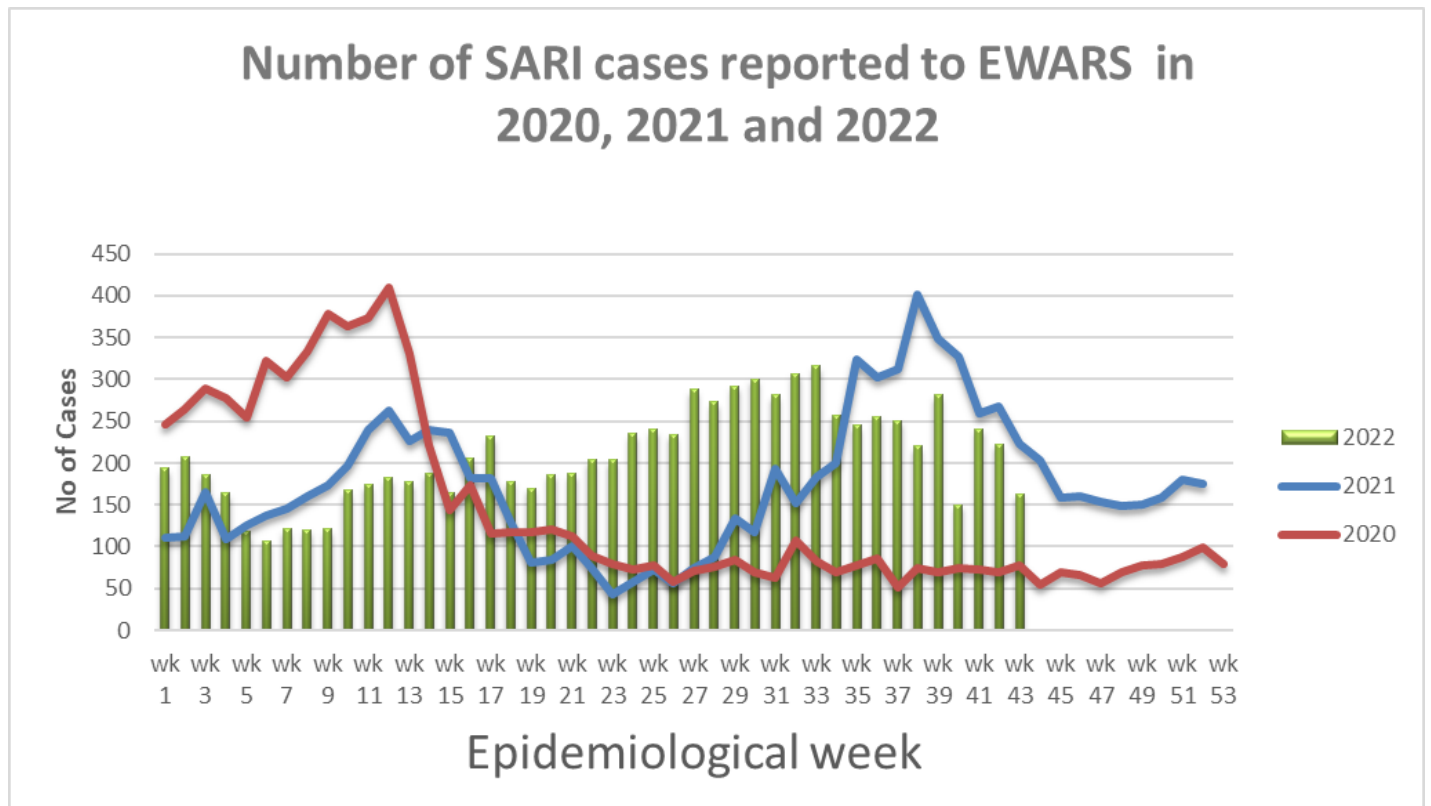
- 136 cases of AGE were reported this week. Most of these cases were reported from Parsa (28case), Bara (14 case), Mahottari (10 case), Kapilbastu (9 case), Nawalparasi West (7 case), Rupandehi, Kathmandu, and Bardiya (5 case from each district).
- 120 cases of AGE were reported this week in 2021.

Number of AGE cases reported to EWARS in 2020, 2021 and 2022



2. Severe Acute Respiratory Infection (SARI)

- 163 cases of SARI were reported this week. Most of these cases were reported from Morang (24 case), Rupandehi (14 case), Parsa (12 case), Kathmandu (9 case), Sunsari, Saptari, and Jhapa (8 case from each district), Kailali, and Dhading (7 case from each district), Palpa (5 case).
- 226 cases of SARI were reported this week in 2021.



3. Malaria

- Zero case of malaria was reported this week.
- Five cases of malaria were reported this week in 2021.

4. Kala-azar

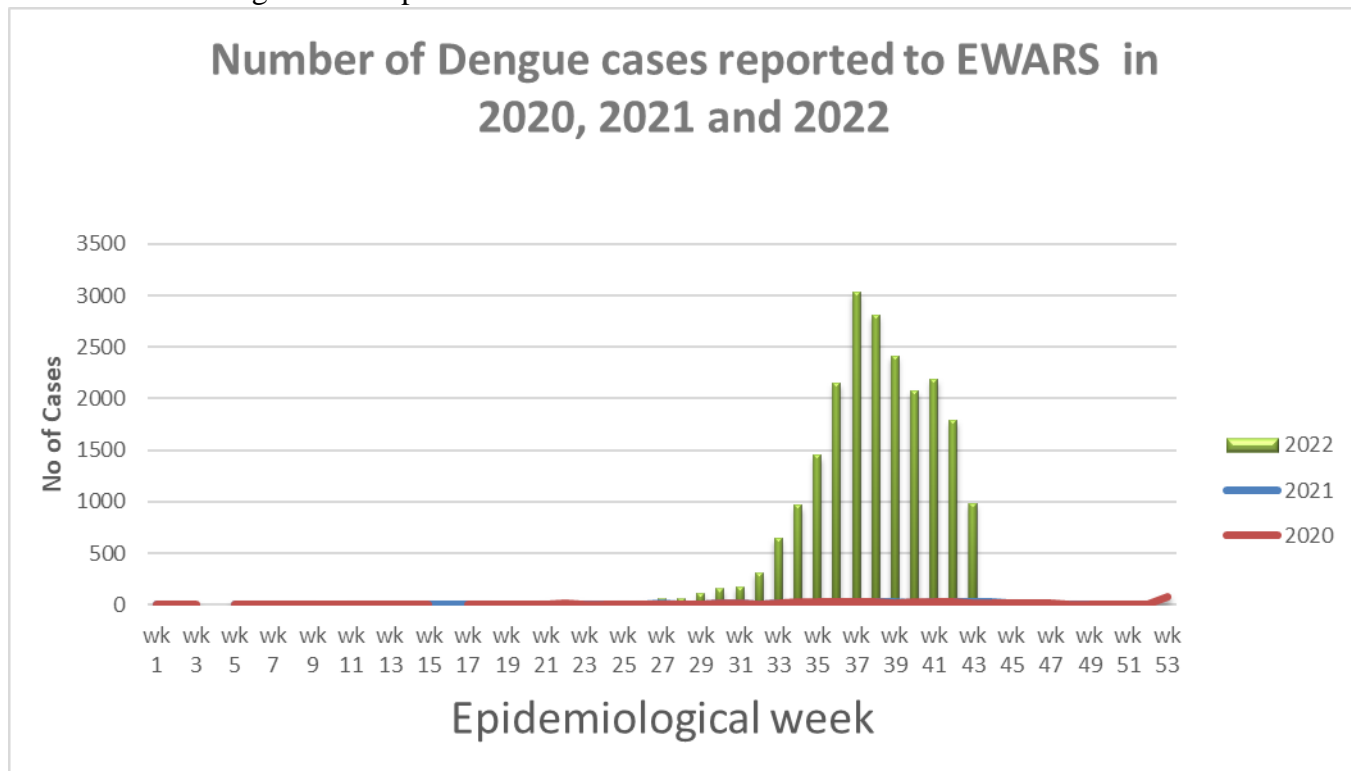
- Two cases of kala-azar were reported this week; one each case was reported from Achham, and Kalikot districts.
- Four cases of kala-azar were reported this week in 2021.

5. Cholera

- Zero case of Cholera was reported this week.
- One case of Cholera was reported this week in 2021.

6. Dengue

- cases of dengue were reported this week. Most of these cases were reported from Kathmandu (206 case), Dhading (175 case), Chitawan (60 case), Lalitpur (54 case), Rupandehi (50 case), Tanahu (39 case), Parbat (27 case), Bara (26 case), Kanchanpur (21 case), Sankhuwasabha (20 case), Parsa, and Khotang (18 case from each district), Kavreplanchok (17 case), Bardiya, and Dang (14 case from each district), Kailali, Nawalparasi East, and Sindhuli (12 case from each district), Sunsari, Bhaktapur, and Sindhupalchok (11 case from each district), Banke, and Dolakha (10 case from each district), Dhankuta, and Makwanpur (9 case from each district), Palpa, Baglung, Ilam, and Morang (7 case from each district), Gorkha (6 case), Bajhang, Panchthar, Rautahat, and Kaski (5 case from each district).
- 32 cases of dengue were reported this week in 2021.



Other diseases

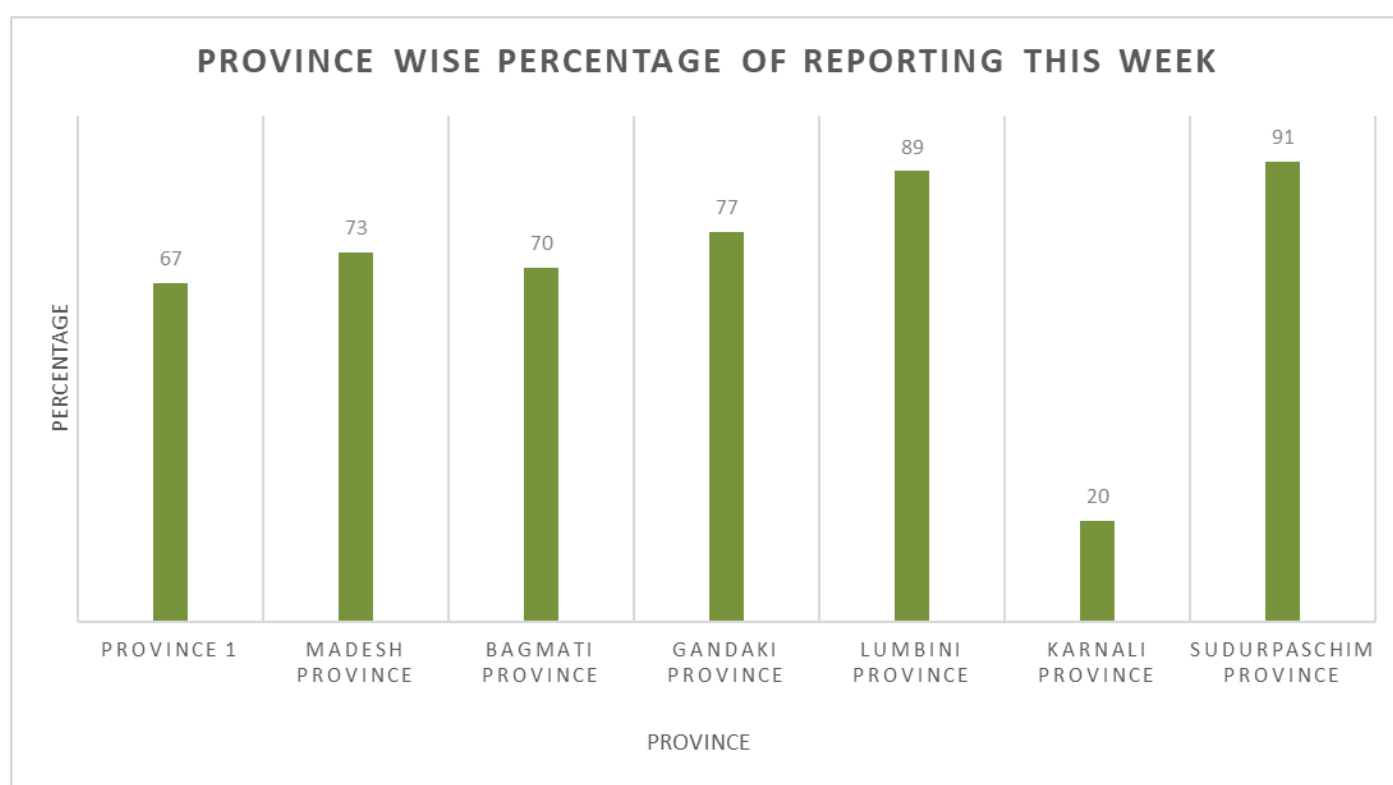
Scrub typhus

- 97 cases of scrub typhus were reported this week. Most of the cases were reported from Bardiya (14 case), Dang (12 case), Rupandehi (10 case), Achham, Kailali, and Kanchanpur (9 case from each district), Palpa (6 case), Bajhang, Baitadi, Parsa, and Gulmi (5 case from each district).
- 97 cases of scrub typhus were reported this week in 2021.

Table: Comparison with previous week by diseases, 2022

Disease	Week 43	Week 42
AGE	136	136
SARI	163	223
Malaria	0	3
Kala-azar	2	4
Dengue	986	1791
Cholera	0	1

Province wise reporting status:



Acknowledgement: The Epidemiology and Disease Control Division (EDCD) highly acknowledges the contribution from all the sentinel sites, medical recorders, EWARS focal persons, rapid response team members and technical support from WHO and GIZ for preparation of this bulletin.

Note: This bulletin is also available at the EDCCD website (please click [here](#)). Other information can also be accessed at the website www.edcd.gov.np. Thank you.



Government of Nepal
Ministry of Health and Population
Department of Health Services
Epidemiology and Disease Control Division
Kathmandu, Nepal