

**Early Warning and Reporting System (EWARS)**

# **Weekly Bulletin**

**(44<sup>th</sup> Epidemiological Week)**

**11 November, 2018**



**Government of Nepal**  
**Ministry of Health and Population**  
**Department of Health Services**  
**Epidemiology and Disease Control Division**  
**Kathmandu, Nepal**  
[ewarsedcd@gmail.com](mailto:ewarsedcd@gmail.com)

This bulletin includes the updates from the Early Warning and Reporting System (EWARS). It includes data since January 2018 till date, including comparison of same period during last year.

## The Early Warning and Reporting System (EWARS)

### Highlights

**AGE:** 86 cases of AGE are reported this week including one death. The death case is from Thankot, Kathmandu.

**SARI:** 217 cases of SARI are reported this week including one death. The death case is from Dhading.

**Malaria:** Three cases of Malaria are reported this week (one each from Bara, Dang and Kailali).

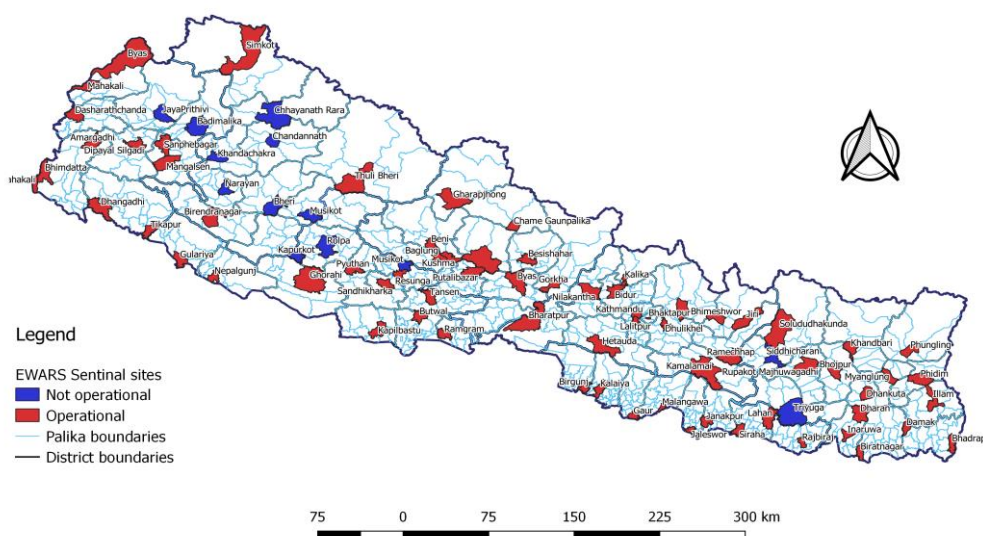
**Scrub typhus:** 27 cases of Scrub typhus are reported this week, and the majority of the cases are from Palpa (8 cases), Rupandehi (3 cases), Kapilvastu (3 cases) and Arghakhanchi (3 cases).

**Dengue:** 10 cases of Dengue are reported this week, one each from Baglung, Dang, Gulmi, kaski, Makwanpur, Mustang, Rautahat, Rupandehi, Sarlahi and Syangja.

The EWARS was established in 1997 to strengthen the flow of information on vector-borne and other outbreak prone infectious diseases from the district to Epidemiology and Disease Control Division (EDCD) and Vector-Borne Disease Research and Training Center (VBDRTC), Hetauda. Rapid Response Teams (RRTs) can be mobilized at short notice to facilitate prompt outbreak response at Central, Regional and District level. RRTs can also support local level health institutions for investigation and outbreak control activities.

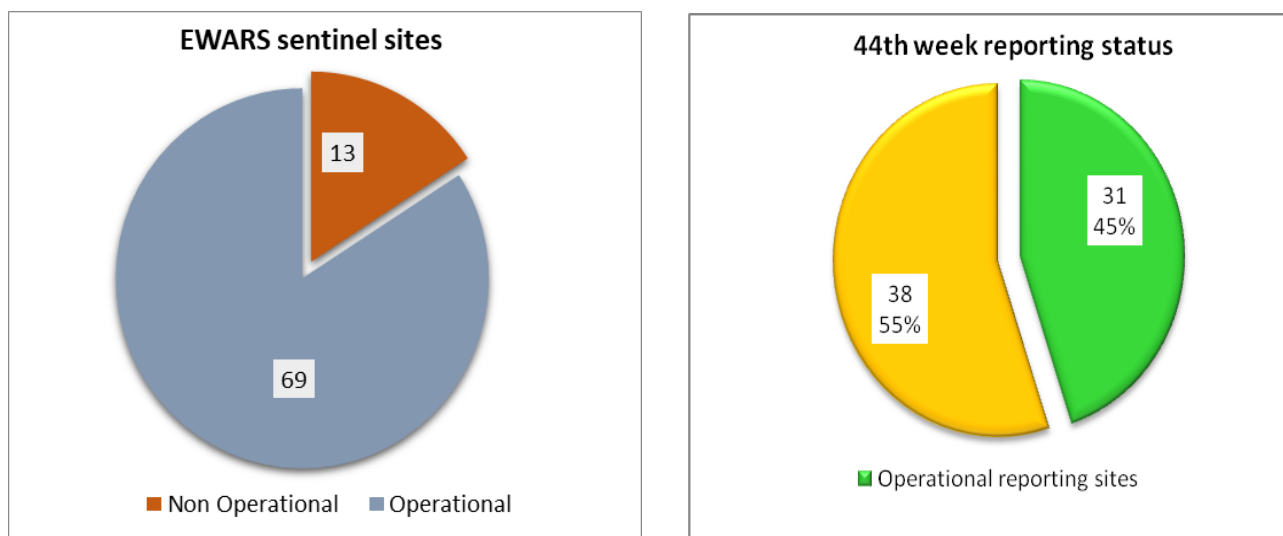
This information system is hospital-based and is currently operational in 69 hospitals (out of 82 sites) throughout Nepal (Figure 1). So far, the EWARS mainly focuses on the **weekly reporting** of number of cases and deaths (including "zero" reports) of six priority diseases/syndromes—Malaria, Kala-azar, Dengue, Acute Gastroenteritis (AGE), Cholera and Severe Acute Respiratory Infection (SARI), and other epidemic potential diseases/syndromes (like enteric fever). It equally focuses on **immediate reporting** (to be reported within 24 hours of diagnosis) of one confirmed case of Cholera, Kala-azar severe and complicated Malaria and one suspect/clinical case of Dengue as well as 5 or more cases of AGE and SARI from the same geographical locality in one-week period.

EWARS Sentinel Sites



## Reporting Status

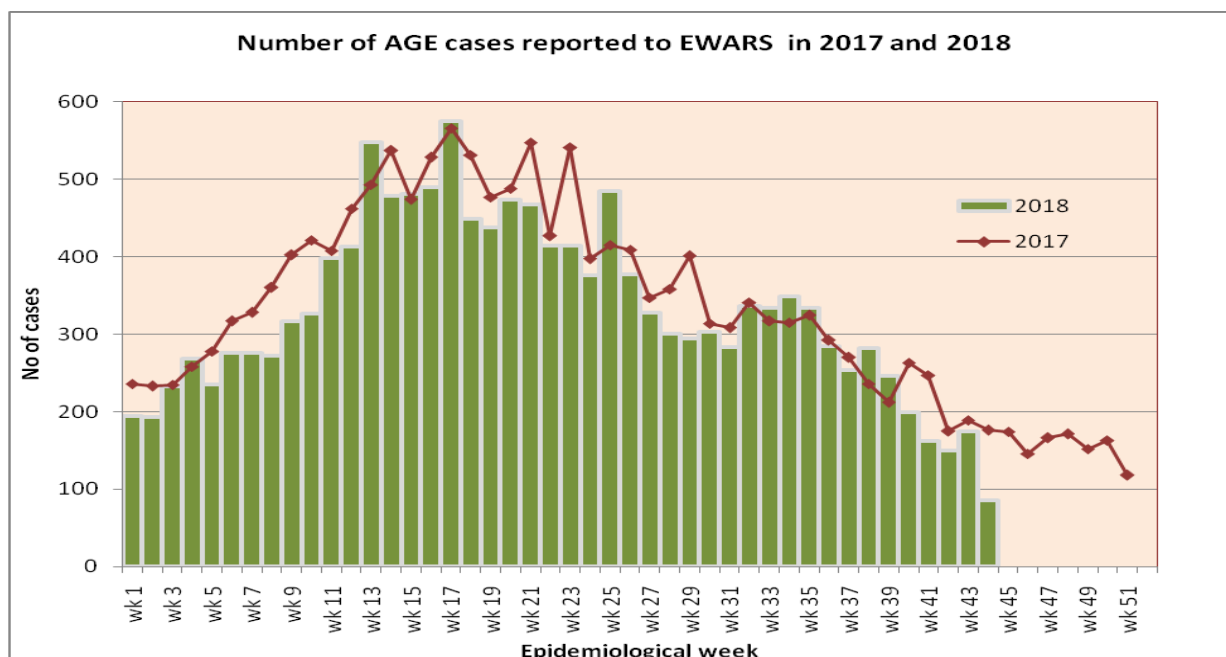
Out of 69 functional EWARS sentinel sites, report was received from 31 sentinel sites (45%) whereas 38 sentinel sites did not report in the 44<sup>th</sup> epidemiological week of 2018. The reporting coverage has decreased compared to the last week.



### 1.1 Acute Gastro-Enteritis and Cholera

86 cases of AGE are reported in the 44<sup>th</sup> epidemiological week of 2018. The majority of these cases are from Jhapa (14 cases), Dolakha (12 cases), and Dhading (6 cases). The number of AGE cases reported in the 44<sup>th</sup> week this year is fewer than those reported in the same week last year (176 cases).

One death from AGE is reported this week from Kathmandu. Fifteen deaths from AGE are reported so far this year. Twenty deaths from AGE were reported in 2017.

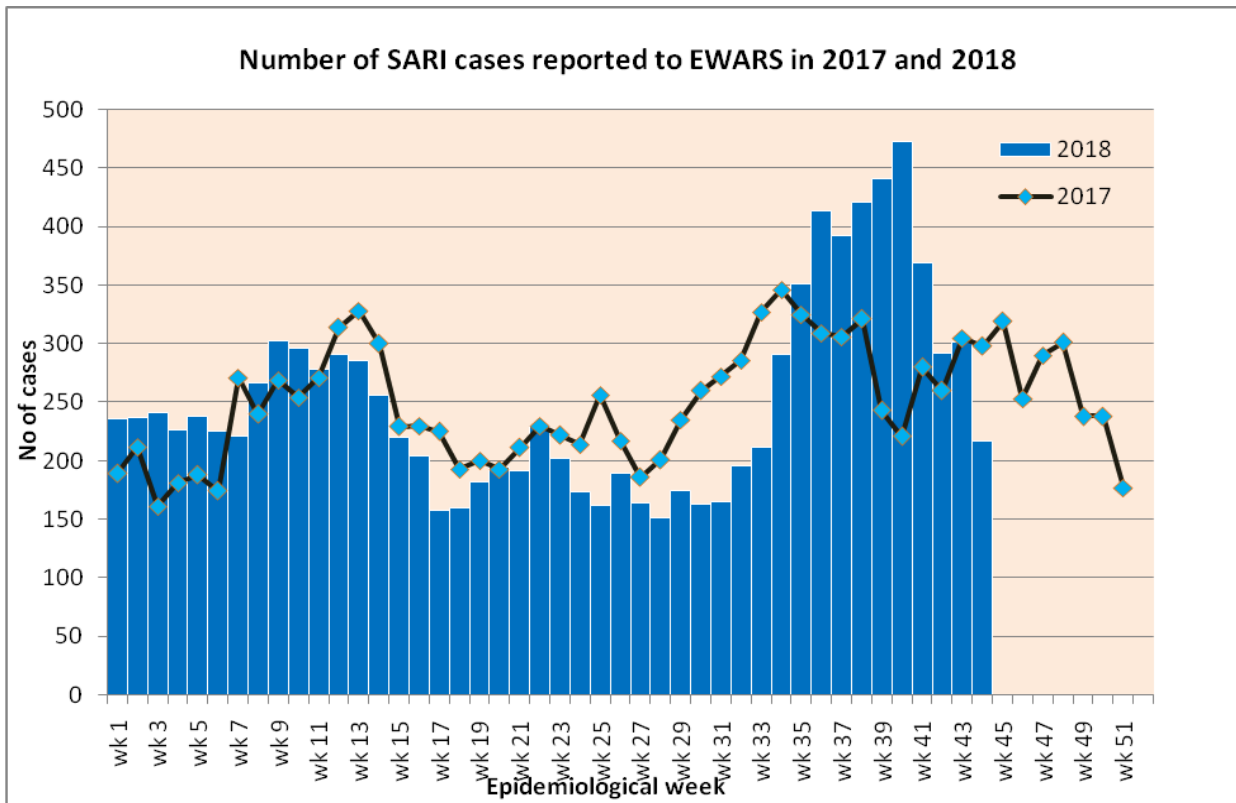


**Cholera:** A total of 3 cases of Cholera have been reported this year. The samples are confirmed positive by National Public Health Laboratory and the cases are from Nuwakot, Kathmandu and Lalitpur district.

## 1.2 Severe Acute Respiratory Infection (SARI)

217 cases of SARI are reported in the 44<sup>th</sup> epidemiological week this year. The majority of these cases are from Morang (37 cases), Jhapa (23 cases), and Lalitpur (15 cases). The cases of SARI reported this week are fewer compared to those from the same week last year (298 cases)

One death from SARI is reported this week from Dhading. Thirty-seven deaths from SARI are reported so far this year. Eighty-two deaths from SARI were reported in 2017.



## 1.3 Enteric Fever

38 cases of Enteric fever are reported this week. The majority of the cases are from Dhading (6 cases) and Kaski (6 cases). No death from Enteric fever is reported so far this year. Three deaths from Enteric fever were reported in 2017.

## 1.4 Malaria

Three cases of Malaria are reported this week (one each from Bara, Dang and Kailali). The same numbers of Malaria cases were reported this week in 2017.

## 1.5 Dengue

Ten cases of Dengue are reported this week, one each from Baglung, Dang, Gulmi, kaski, Makwanpur, Mustang, Rautahat, Rupandehi, Sarlahi and Syangja.

One hundred thirty-nine cases of Dengue including two deaths are reported so far this year. Twelve hundred and one cases of dengue were reported through EWARS in 2017.

## 1.6 Kala-azar

No case of Kala-azar is reported this week. One hundred forty-four cases of Kala-azar including two deaths are reported so far this year. Two hundred twelve cases of Kala-azar were reported through EWARS in 2017.

## 1.7 Scrub typhus

Twenty-seven cases of Scrub typhus are reported this week, and the majority of the cases are from Palpa (8 cases), Rupandehi (3 cases), Kapilvastu (3 cases) and Arghakhanchi (3 cases).

The number of Scrub typhus cases reported this week are slightly more than those reported in the same week last year (16 cases). Five hundred ninety-five cases of Scrub typhus including one death are reported so far this year. Four hundred fifty-one cases of Scrub typhus were reported through EWARS in 2017.

### Timeliness of reporting from sentinel sites:

Code	Sentinel Sites	Timeliness (This Week)	Site Code	Sentinel Sites	Timeliness (This Week)
101	Mechi ZH, Jhapa	On Time	136	DH, Illam	On Time
102	Koshi ZH, Morang	On Time	137	Dhulikhel H., Kavre	On Time
103	DH, Sunsari	On Time	138	DH, Solukhumbu	No Reporting
104	BPKIHS, Dharan	No Reporting	139	DH, Dolpa	No Reporting
105	DH, Dhankuta	On Time	140	DH, Humla	No Reporting
106	SZH, Saptari	On Time	201	L. Comm DH, Lamjung	No Reporting
107	RKUP Lahan, Siraha	On Time	202	DH, Dhading	On Time
108	DH, Siraha	No Reporting	203	DH, Ramechhap	On Time
109	JZH, Dhanusha	On Time	204	Bhaktapur Hospital	No Reporting
110	DH, Rautahat	No Reporting	205	Patan Hospital, Lalitpur	On Time
111	DH, Bara	On Time	206	DH, Gorkha	No Reporting
112	NSRH, Parsa	No Reporting	207	DH Trishuli, Nuwakot	No Reporting
113	DH, Makwanpur	No Reporting	208	Charikot PHCC, Dolakha	On Time
114	Bharatpur Hospital, Chitwan	No Reporting	209	Jiri H, Dolakha	On Time
115	Kanti CH, Kathmandu	On Time	210	DH, Syangja	No Reporting
116	STIDH, Kathmandu	On Time	211	DH, Tanahun	No Reporting
117	UMH, Palpa	On Time	212	PAHS/WRH, Kaski	On Time
118	PCH, Nawalparasi	On Time	213	DH, Myagdi	On Time
119	PBH, Kapilbastu	No Reporting	214	DH, Gulmi	No Reporting
120	LZH, Rupandehi	On Time	215	DZH, Baglung	On Time
121	RSRH Dang	On Time	216	DH, Parbat	No Reporting
122	MWRH, Surkhet	No Reporting	217	DH, Arghakhanchi	No Reporting
123	BZH, Banke	No Reporting	218	DH, Manang	On Time
124	SZH, Kailali	On Time	219	DH, Mustang	No Reporting
125	MZH, Kanchanpur	On Time	220	DH, Pyuthan	No Reporting
126	DH, Doti	No Reporting	229	DH, Achham	No Reporting
127	DH, Bardiya	No Reporting	230	DH, Baitadi	No Reporting
128	DH, Mahottari	No Reporting	231	DH, Darchula	No Reporting
129	DH, Dadeldhura	No Reporting	234	DH, Taplejung	No Reporting
130	DH, Rasuwa	No Reporting	235	DH, Panchthar	No Reporting
131	DH, Sankhuwasabha	No Reporting	236	DH, Terhathum	No Reporting
132	AMDA Hosp., Jhapa	On Time	237	DH, Bhojpur	On Time
133	DH, Chautara	On Time	238	DH, Khotang	No Reporting
134	DH, Sarlahi	No Reporting	301	Bayalpata Hosp., Achham	On Time
135	DH, Sindhuli	No Reporting	302	Tikapur Hospital, Kailali	No Reporting

**Acknowledgement** The Epidemiology and Disease Control Division highly acknowledges the contribution from all the medical recorders, EWARS focal persons, rapid response team members and support from WHO for preparation of this bulletin.

**Note:** EWARS reporting form (in MS Excel format) is available at EDCD's official website [www.edcd.gov.np](http://www.edcd.gov.np) . This bulletin is also available at the website.