

Early Warning and Reporting System (EWARS)

Weekly Bulletin

(46th Epidemiological Week)

25 November, 2018



Government of Nepal
Ministry of Health and Population
Department of Health Services
Epidemiology and Disease Control Division
Kathmandu, Nepal
ewarsedcd@gmail.com

This bulletin includes the updates from the Early Warning and Reporting System (EWARS). It includes data since January 2018 till date, including comparison of same period during last year.

The Early Warning and Reporting System (EWARS)

Highlights

SARI: Three deaths from SARI are reported this week (two from Sainamaina municipality, Rupandehi and one from Putalibazar, Syangja). A total of 150 cases of SARI are reported this week.

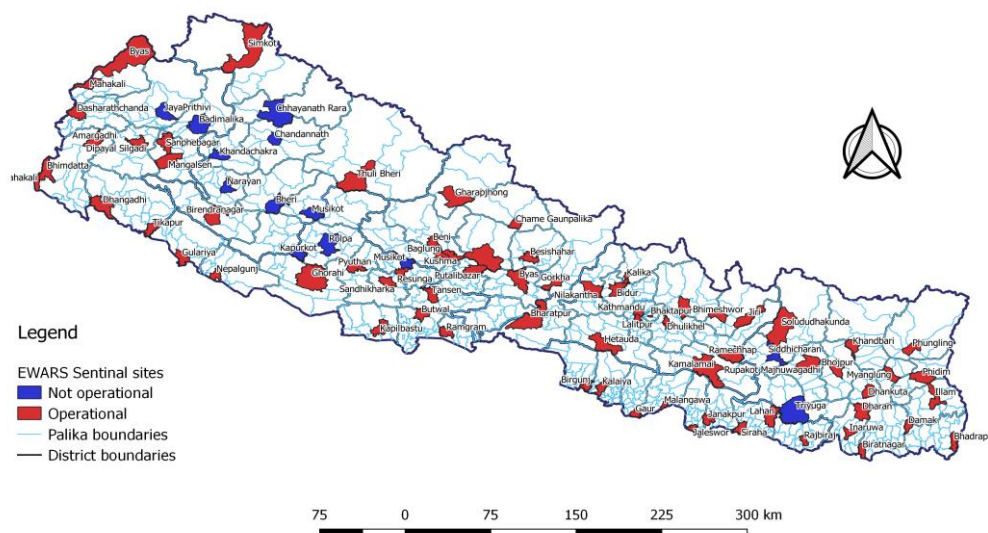
Dengue: 13 cases of Dengue are reported this week. The majority of the cases are from Rupandehi (3 cases) and Kanchanpur (2 cases).

Scrub typhus: One death from Scrub Typhus is reported this week from Walting, Kavre. A total of 25 cases of Scrub typhus are reported this week.

The EWARS was established in 1997 to strengthen the flow of information on vector-borne and other outbreak prone infectious diseases from the district to Epidemiology and Disease Control Division (EDCD) and Vector-Borne Disease Research and Training Center (VBDRTC), Hetauda. Rapid Response Teams (RRTs) can be mobilized at short notice to facilitate prompt outbreak response at Central, Regional and District level. RRTs can also support local level health institutions for investigation and outbreak control activities.

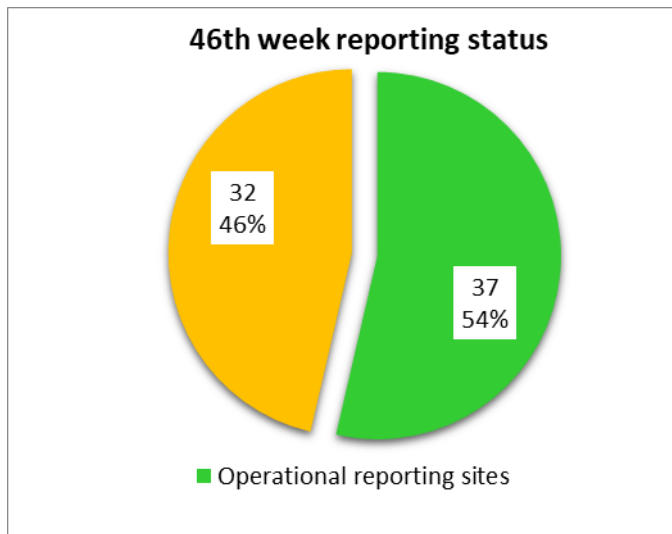
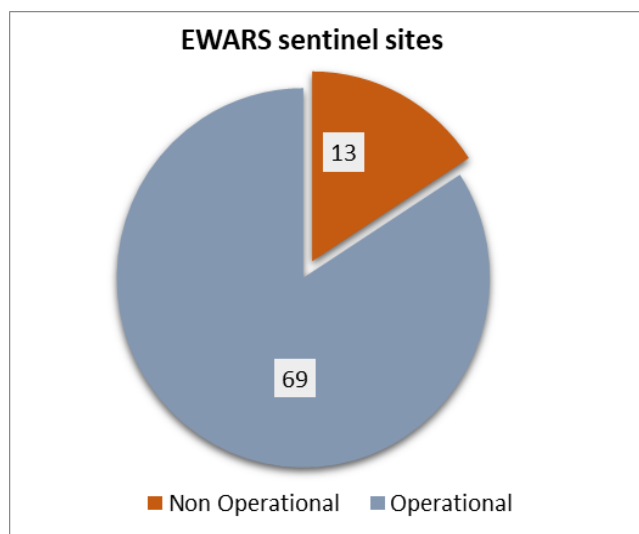
This information system is hospital-based and is currently operational in 69 hospitals (out of 82 sites) throughout Nepal (Figure 1). So far, the EWARS mainly focuses on the **weekly reporting** of number of cases and deaths (including "zero" reports) of six priority diseases/syndromes—Malaria, Kala-azar, Dengue, Acute Gastroenteritis (AGE), Cholera and Severe Acute Respiratory Infection (SARI), and other epidemic potential diseases/syndromes (like enteric fever). It equally focuses on **immediate reporting** (to be reported within 24 hours of diagnosis) of one confirmed case of Cholera, Kala-azar severe and complicated Malaria and one suspect/clinical case of Dengue as well as 5 or more cases of AGE and SARI from the same geographical locality in one-week period.

EWARS Sentinel Sites



Reporting Status

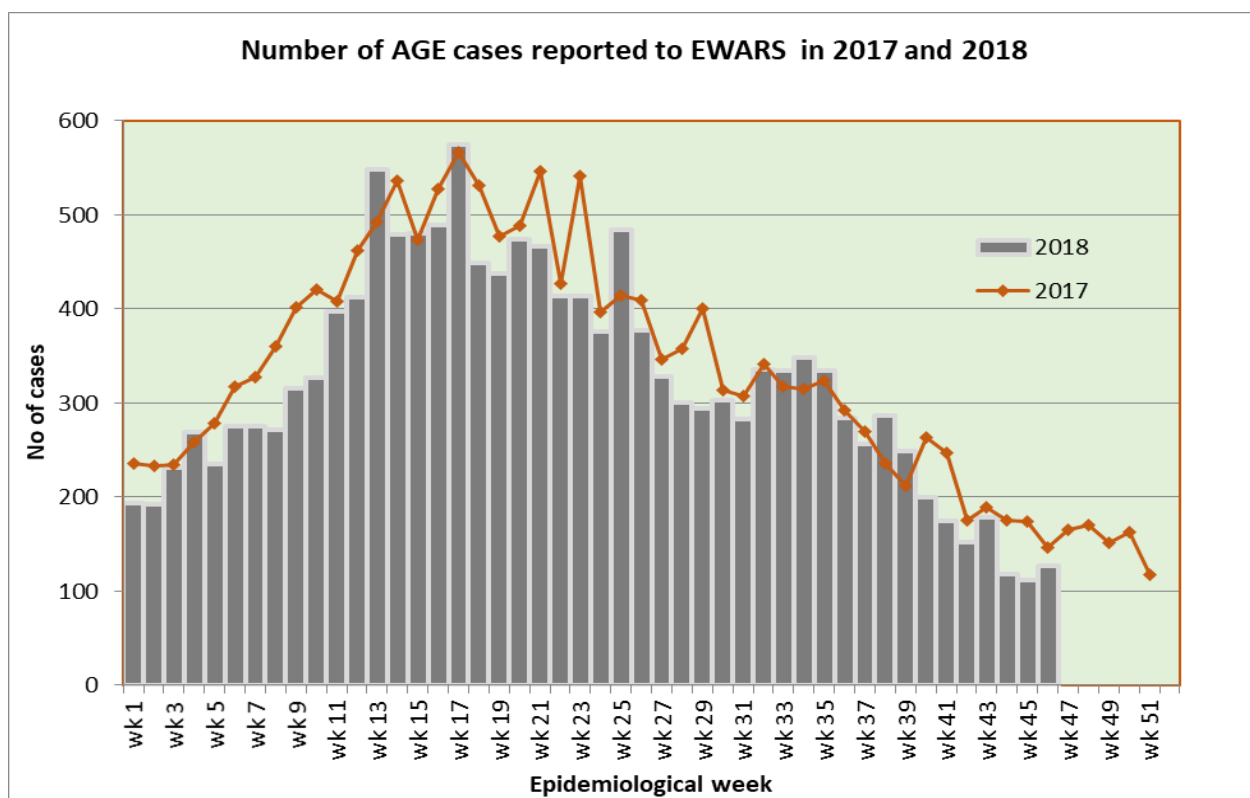
Out of 69 functional EWARS sentinel sites, report was received from 37 sentinel sites (54%) whereas 32 sentinel sites did not report in the 46th epidemiological week of 2018. The reporting coverage has increased compared to the last week.



1.1 Acute Gastro-Enteritis and Cholera

127 cases of AGE are reported in the 46th epidemiological week of 2018. The majority of these cases are from Dolakha (17 cases), Bardiya (8 cases) and Rupandehi (8 cases). The number of AGE cases reported in the 46th week this year are fewer than those reported in the same week last year (146 cases).

No death from AGE is reported this week. Fifteen deaths from AGE are reported so far this year. Twenty deaths from AGE were reported in 2017.

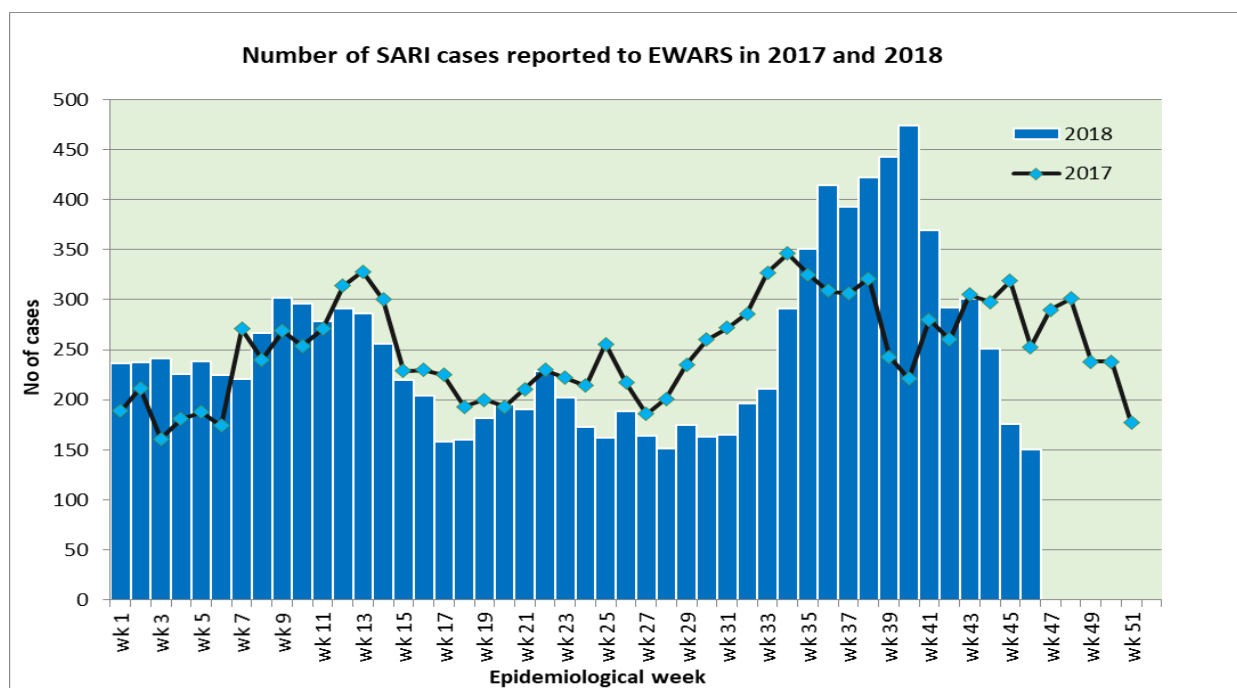


Cholera: A total of 3 cases of Cholera have been reported this year. The samples are confirmed positive by National Public Health Laboratory and the cases are from Nuwakot, Kathmandu and Lalitpur district.

1.2 Severe Acute Respiratory Infection (SARI)

150 cases of SARI are reported in the 46th epidemiological week this year. The majority of these cases are from Rupandehi (21 cases), Morang (20 cases) and Kailali (10 cases). The cases of SARI reported this week are fewer compared to those from the same week last year (253 cases)

Three deaths from SARI are reported this week (two from Sainamaina municipality, Rupandehi and one from Putalibazar, Syangja). Forty-one deaths from SARI are reported so far this year. Eighty-two deaths from SARI were reported in 2017.



1.3 Enteric Fever

32 cases of Enteric fever are reported this week. The majority of the cases are from Kaski (6 cases), Lamjung (5 cases) and Jhapa (3 cases). No death from Enteric fever is reported so far this year. Three deaths from Enteric fever were reported in 2017.

1.4 Malaria

No case of Malaria is reported this week. One case of Malaria was reported this week in 2017.

1.5 Dengue

13 cases of Dengue are reported this week. The majority of the cases are from Rupandehi (3 cases) and Kanchanpur (2 cases).

One hundred ninety cases of Dengue including two deaths are reported so far this year. Twelve hundred and one cases of Dengue were reported through EWARS in 2017.

1.6 Kala-azar

Eight cases of Kala-azar are reported this week, of which five are from Bajura and one each is reported from Kalikot, Okhaldhunga and Syangja. One hundred sixty-four cases of Kala-azar including two deaths are reported so far this year. Two hundred twelve cases of Kala-azar were reported through EWARS in 2017.

1.7 Scrub typhus

Twenty-five cases of Scrub typhus are reported this week, and the majority of the cases are from Rupandehi (5 cases) and Banke (3 cases).

One death from Scrub Typhus is reported this week from Walting, Kavre. The number of Scrub typhus cases reported this week are slightly more than those reported in the same week last year (9 cases). Seven hundred thirty-one cases of Scrub typhus including two deaths are reported so far this year. Four hundred fifty-one cases of Scrub typhus were reported through EWARS in 2017.

Timeliness and completeness of reporting from sentinel sites:

| Code | Sentinel Sites | Timeliness (This Week) | Completeness (%) | Site Code | Sentinel Sites | Timeliness (This Week) | Completeness (%) |
|------|-----------------------------|------------------------|------------------|-----------|---------------------------|------------------------|------------------|
| 101 | Mechi ZH, Jhapa | On Time | 100 | 136 | DH, Illam | On Time | 100 |
| 102 | Koshi ZH, Morang | On Time | 100 | 137 | Dhulikhel H., Kavre | No Reporting | 98 |
| 103 | DH, Sunsari | On Time | 100 | 138 | DH, Solukhumbu | On Time | 80 |
| 104 | BPKIHS, Dharan | On Time | 100 | 139 | DH, Dolpa | No Reporting | 0 |
| 105 | DH, Dhankuta | On Time | 100 | 140 | DH, Humla | No Reporting | 0 |
| 106 | SZH, Saptari | On Time | 72 | 201 | L. Comm DH, Lamjung | On Time | 100 |
| 107 | RKUP Lahan, Siraha | On Time | 100 | 202 | DH, Dhading | On Time | 80 |
| 108 | DH, Siraha | No Reporting | 98 | 203 | DH, Ramechhap | On Time | 100 |
| 109 | JZH, Dhanusha | No Reporting | 98 | 204 | Bhaktapur Hospital | On Time | 24 |
| 110 | DH, Rautahat | No Reporting | 72 | 205 | Patan Hospital, Lalitpur | On Time | 100 |
| 111 | DH, Bara | No Reporting | 100 | 206 | DH, Gorkha | No Reporting | 98 |
| 112 | NSRH, Parsa | No Reporting | 98 | 207 | DH Trishuli, Nuwakot | No Reporting | 4 |
| 113 | DH, Makwanpur | No Reporting | 98 | 208 | Charikot PHCC, Dolakha | On Time | 100 |
| 114 | Bharatpur Hospital, Chitwan | On Time | 100 | 209 | Jiri H, Dolakha | No Reporting | 98 |
| 115 | Kanti CH, Kathmandu | On Time | 100 | 210 | DH, Syangja | No Reporting | 98 |
| 116 | STIDH, Kathmandu | On Time | 100 | 211 | DH, Tanahun | No Reporting | 78 |
| 117 | UMH, Palpa | On Time | 100 | 212 | PAHS/WRH, Kaski | On Time | 100 |
| 118 | PCH, Nawalparasi | No Reporting | 96 | 213 | DH, Myagdi | On Time | 52 |
| 119 | PBH, Kapilbastu | No Reporting | 85 | 214 | DH, Gulmi | No Reporting | 83 |
| 120 | LZH, Rupandehi | No Reporting | 100 | 215 | DZH, Baglung | No Reporting | 98 |
| 121 | RSRH Dang | No Reporting | 98 | 216 | DH, Parbat | No Reporting | 58 |
| 122 | MWRH, Surkhet | On Time | 100 | 217 | DH, Arghakhanchi | On Time | 61 |
| 123 | BZH, Banke | On Time | 78 | 218 | DH, Manang | On Time | 74 |
| 124 | SZH, Kailali | On Time | 63 | 219 | DH, Mustang | No Reporting | 43 |
| 125 | MZH, Kanchanpur | On Time | 100 | 220 | DH, Pyuthan | No Reporting | 57 |
| 126 | DH, Doti | No Reporting | 98 | 229 | DH, Achham | No Reporting | 98 |
| 127 | DH, Bardiya | On Time | 96 | 230 | DH, Baitadi | No Reporting | 85 |
| 128 | DH, Mahottari | No Reporting | 76 | 231 | DH, Darchula | No Reporting | 27 |
| 129 | DH, Dadeldhura | No Reporting | 0 | 234 | DH, Taplejung | No Reporting | 18 |
| 130 | DH, Rasuwa | No Reporting | 85 | 235 | DH, Panchthar | No Reporting | 98 |
| 131 | DH, Sankhuwasabha | On Time | 98 | 236 | DH, Terhathum | No Reporting | 19 |
| 132 | AMDA Hosp., Jhapa | On Time | 100 | 237 | DH, Bhojpur | On Time | 93 |
| 133 | DH, Chautara | On Time | 100 | 238 | DH, Khotang | No Reporting | 41 |
| 134 | DH, Sarlahi | On Time | 100 | 301 | Bayalpata Hosp., Achham | No Reporting | 96 |
| 135 | DH, Sindhuli | On Time | 100 | 302 | Tikapur Hospital, Kailali | On Time | 84 |
| | | | | | | | |
| | | | | | | Excellent (>80) | |
| | | | | | | Satisfactory (50-79) | |
| | | | | | | Bad(<50) | |

Acknowledgement The Epidemiology and Disease Control Division highly acknowledges the contribution from all the medical recorders, EWARS focal persons, rapid response team members and support from WHO for preparation of this bulletin.

Note: EWARS reporting form (in MS Excel format) is available at EDCD's official website www.edcd.gov.np. This bulletin is also available at the website.